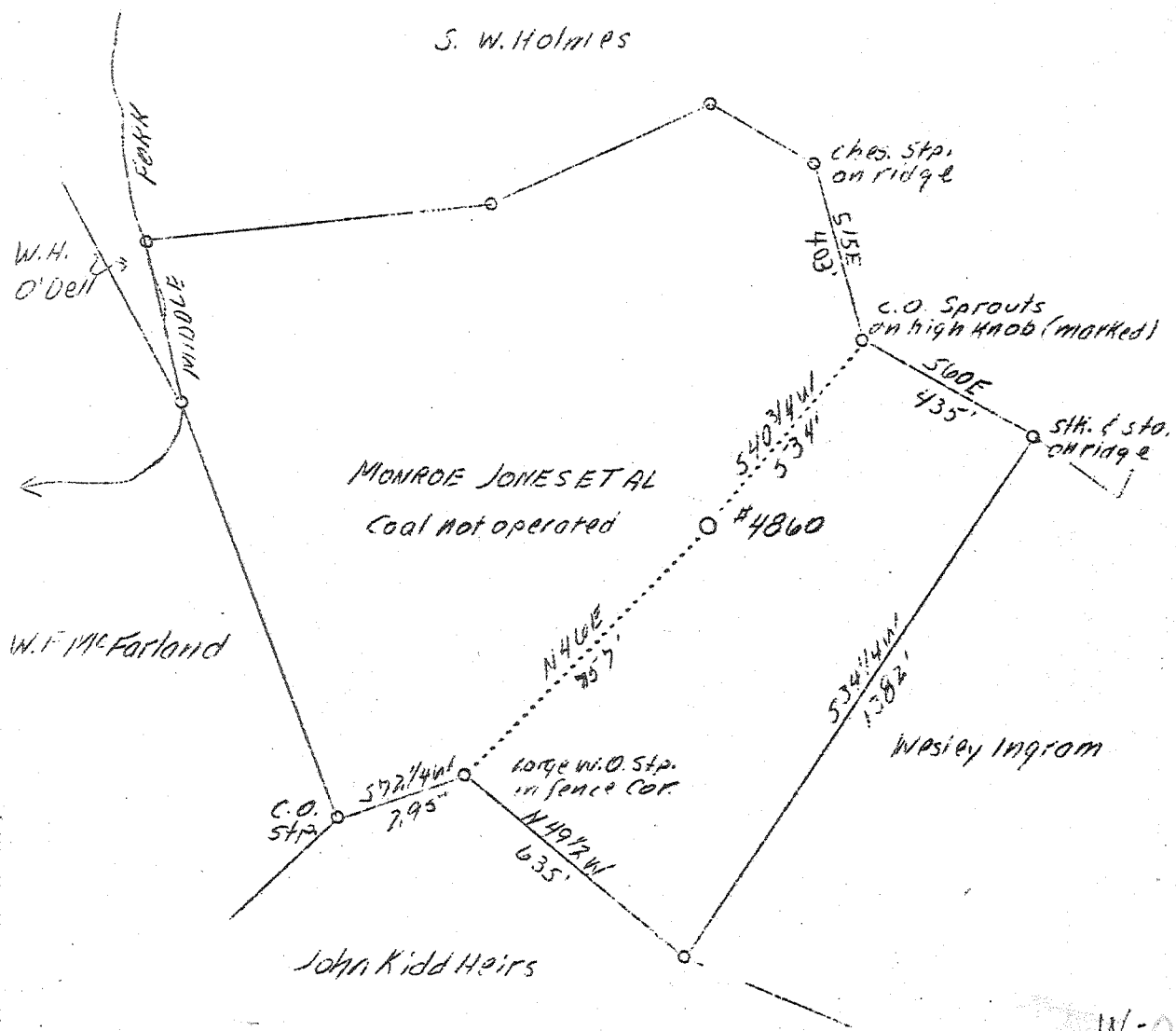


LATITUDE 38°35'

LONGITUDE 81°35'



Permit issued: 7-27-39

W-0.81
S-0.81

ABD.
7/4/44

New location

Company	United Fuel Gas Co.
Address	Charleston, W. Va.
Farm	Monroe Jones, et al
Acres	50
Lease No.	40511
Well (Farm) No.	1
Serial No.	4860
Elevation (SL)	- 4343
Quadrangle	Konna SC
County	Jackson
District	Washington
Engineer	G. A. Cunningham
Eng. Reg. No.	659
File No.	62 - 73
Date	August 16, 1939
Scale	1" = 400'

STATE OF WEST VIRGINIA
Department of Mines
OIL & GAS DIVISION
Charleston

WELL LOCATION MAP

File No. 1ac-53

x Denotes location of well on U. S. Topographic Maps, scale 1 to 62,500, latitude and longitude lines being represented by border lines as shown.

- Denotes one inch spaces on border line of original tracing.

WEST VIRGINIA DEPARTMENT OF MINES
OIL & GAS DIVISION
W E L L R E C O R D

Permit No. Jac-58
Keona Quad.

Gas Well

Company	United Fuel Gas Co.	14	270	pulled
Address	Charleston, W. Va.	10	706	706
Farm	Monroe Jones ACRES 50	8-5/8	1943	1943
Location	Middle Fork of Poca River	7	4984	4984
Well No.	4860 ELEV. 834.3			
District	Washington - Jackson County			
Surface	S. W. Holmes, Ripley, W. Va.			
Mineral	G. W. Shumblin, et al., Ripley, W. Va.			
Commenced	Sept. 18, 1939			
Completed	Dec. 19, 1939			
Shot	12/19/39 - Depth 5121			
Volume	Gas Well			
Rock Pressure	-			
Fresh Water	395			
Salt Water	1373			

CASTING & TUBING

3761 Mcf - Vol XVI

Shot @ 5121

Red Rock	0	46	
Slate	46	84	
Sand	84	139	
Black Slate	139	238	
Sand	238	270	
Slate	270	365	
Sand	365	395	1/2 bbl. water per hour @ 395
Red Rock	395	580	
Lime	580	600	
Slate	600	640	
Red Rock	640	655	
Slate	655	745	
Sand	745	808	
Slate	808	853	
Sand	853	961	
Slate	961	1021	
Sand	1021	1069	
Slate	1069	1089	
Sand	1089	1135	
Slate & Shells	1135	1301	
Salt Sand	1301	1702	Hole full water 1373
Little Lime	1702	1727	
Pencil Uave	1727	1730	
Big Lime	1730	1880	
Injun Sand	1880	1935	
Slate&Shells	1935	2350	
Hard Shell	2350	3000	
Slate&Shells	3000	4037	
Brown Shale-4A1	4037	4215	
White Slate	4215	4650	
Brown Shale	4650	4953	
Black Shale <i>Marietta</i>	4953	4972	
Corniferous Lime <i>MS</i>	4972	5103	Gas pay 5126-5132
Oriskany Sand	5103	5139	Show gas 5126
Total Depth		5139	Steel Line (U.F.G.)

475

12-15-39 - parted cable 500' from top hole.
Lost string tools - Fishing
12-16-39 - Recovered tools.