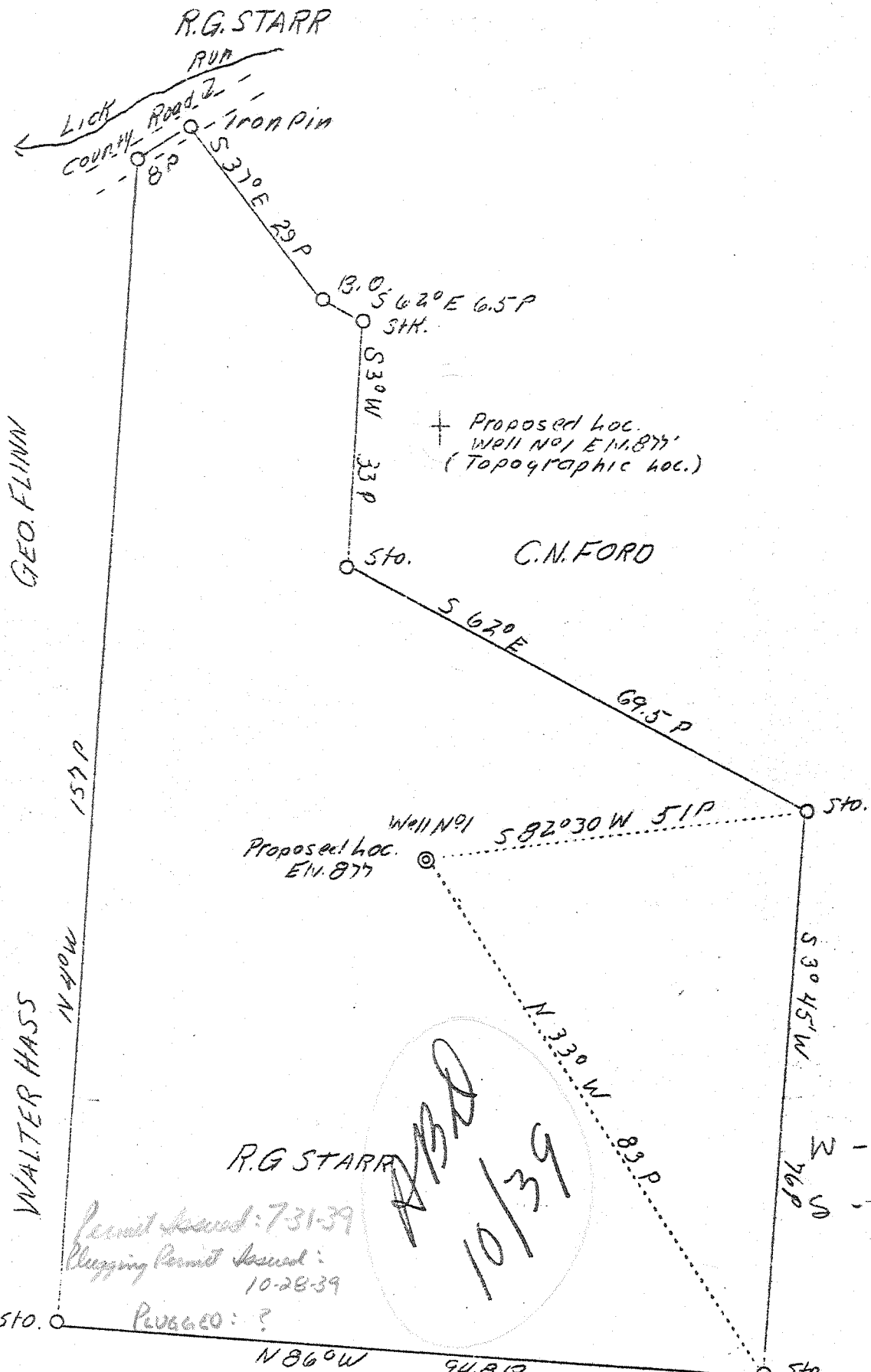


LATITUDE 39°00'

LONGITUDE 81°40'



GEO. FLINN

WALTER HASS



Permit Issued: 7-31-39
 Plugging Permit Issued: 10-28-39
 Reugged: ?

ABD
 10/31/39

3.47 W
 W - 3.45
 S - 3.20
 3.19 S

New location E.B. GILL C. HUTCHINSON 3 WC (H-5)

Company	Joseph Rubin
Address	1900 19th. St. Parkersburg, W. Va.
Farm	R.G. Starr
Tract	2
Acres	64.75
Well (Farm) No.	1
El. (S.L.)	877'
Quadrangle	Ripley - NW
County	Jackson
District	Ravenswood
Eng.	J.E. Anderson
Eng. Reg. No.	Surveyor
Date	July 14, 1939
Scale	1" = 20 P.

STATE OF WEST VIRGINIA
 Department of Mines
 OIL AND GAS DIVISION
 Charleston

WELL LOCATION MAP

File No. Jac-52

x Denotes location of well On U.S. Topographic Maps, scale 1 to 62,500, latitude and longitude lines being represented by border lines as shown.

- Denotes one inch spaces on border lines of original tracing.

Vol. 82-10-127

1-0 (000) Deep Well

WEST VIRGINIA DEPARTMENT OF MINES
OIL & GAS DIVISION
W E L L R E C O R D

Permit No. Jac-52
Ripley Quad.

Dry Hole

Company	Joe Rubin	CASING & TUBING
Address	1900-19th St., Parkersburg, W. Va.	14 327
Farm	R. G. Starr ACRES 110	10-1/4 898
Location	Lick Run	8-1/4 1436
Well No.	One ELEV. 877	6-5/8 2052
District	Ravenswood - Jackson County	No Coal
Surface & Mineral	R. G. Starr, Ravenswood, W. Va.	
Commenced	Aug. 1, 1939	
Completed	Oct. 13, 1939	
Shot	Oct. 13, 1939 - Depth 15'	
Open Flow	-	
Volume	Dry	
Rock Pressure	None	
Oil	None	
Water	None	

Formation	Tap	Base		Formation	Tap	Base
Clay - Red	0	50		Black Slate	1395	1421
Blue Mud	50	60		Sand	1421	1447
Red Rock	60	110		White Slate	1447	1600
Blue Slate	110	140		Sand	1600	1615
Red Rock	140	200		Slate	1615	1630
Blue Slate	200	225		Sand	1630	1643
Red Rock	225	250		Slate	1643	1695
Blue Slate	250	260		Sand - <i>Marl</i>	1695	1740
Red Rock	260	290		Slate	1740	1760
Blue Slate	290	365		Lime - L. Lime	1760	1775
Red Rock	365	370		Slate - P. Cave	1775	1780
Blue Slate	370	388		Big Lime	1780	1905
Sand	388	450	W 445 -	Slate	1905	1925
Slate	450	450	2 blrs.	Black Lime	1925	1965
Red Rock	460	475		Slate	1965	2010
Sand	475	493		Sand - <i>Wear Sand</i>	2010	2028
Red Rock	493	505		Slate & Shells	2028	3508
Blue Slate	505	518		Brown Shale - <i>441</i>	3508	3550
Sand	518	535		Slate & Shells	3550	3775
Red Rock	535	560		Brown Shale	3775	4000
Slate	560	600		Slate	4000	4390
Red Rock	600	625		Brown Shale	4390	4480
Slate	625	638	W 680 -	Dark Shale - <i>455</i>	4480	4590
Sand	638	700	2 blrs.	Corniferous Lime - <i>463</i>	4590	4741
Slate	700	720		Total Depth of Well		4741
Red	720	730				
Slate	730	775				
1st Cow Run Sand	775	805				
White Slate	805	835	More Water			
Red Rock	835	856				
Blue Slate	856	875				
2nd Cow Run Sand	875	898				
Blue Slate	898	912				
Red Rock	912	953				
Slate	953	990				
Red Rock	990	1010				
Blue Slate	1010	1040				
Sand	1040	1060				
Slate	1060	1140				
Sand	1140	1232				
Black Slate	1232	1240				
Sand	1240	1284				
Blue Slate	1284	1368				
Sand	1368	1375				
Blue Slate	1375	1384				
Sand	1384	1395				