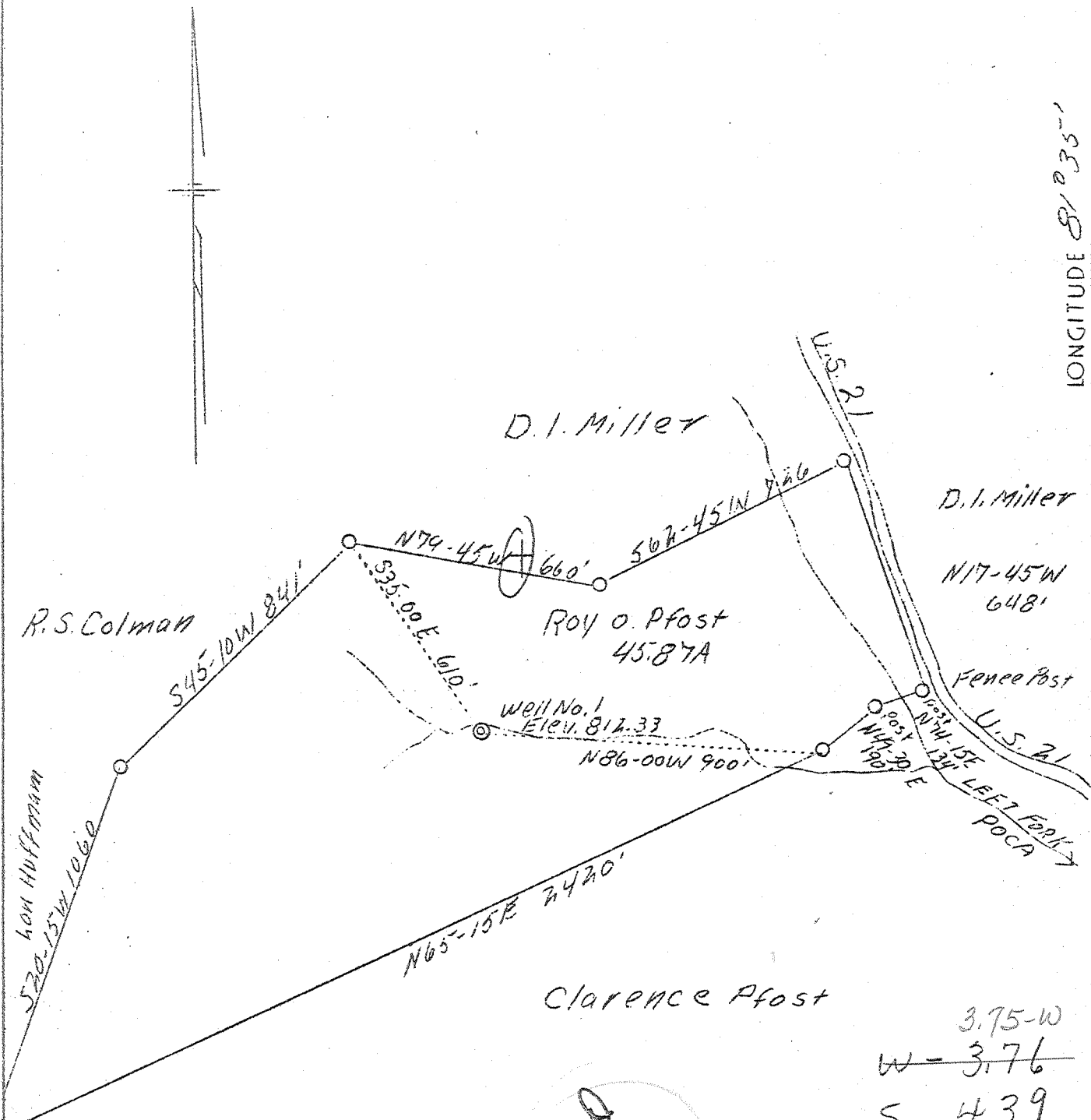


LATITUDE 38°40'

LONGITUDE 81°35'



3.75-W
W - 3.76
S - 4.39

P 30
9/43

Permit issued: 7-2-39

New location

<p>Company Everett Starcher et al Address Spencer, W.Va. Farm Roy O. Pfost Tract 45.87 Well (Farm) No. 1 El. (S.L.) 812.33 719 TOPO Quadrangle Kenna County Jackson District Ripley Eng. L.F. Dye Eng. Rec. No. 804 Date 6/19/39 Scale 1" = 400'</p>	<p>STATE OF WEST VIRGINIA Department of Mines OIL AND GAS DIVISION</p> <p>Charleston</p> <p>WELL LOCATION MAP</p> <p>File No. <u>Jac-50</u></p> <p>⊗ Denotes location of well on U.S. Topographic Maps, scale 1 to 62,500, latitude and longitude lines being represented by border lines as shown.</p> <p>- Denotes one inch spaces on border lines of original tracing.</p>
--	--

Deep
4-6-1939

WEST VIRGINIA DEPARTMENT OF MINES
OIL & GAS DIVISION
W E L L R E C O R D

Permit No. Jac-50
Kenna Quad.

Gas Well

CASING & TUBING

Company	Everett Starcher, et al	13	29	
Address	Spencer, W. Va.	10	670	
Farm	Roy Pfost ACRES 45.87	8-1/4	1921	1921
Location	Duddens Fork	5-3/16	4906	4906
Well No.	1 ELEV. 812.33 712 T.D.			
District	Rinley - Jackson County			
Surface & Mineral	Roy Pfost, Kenna, W. Va.			
Commenced	July 1, 1939			
Completed	Sept. 26, 1939			
Shot	Sept. 1939 - depth -			
Open Flow	75/10ths Merc. in 5-1/2 inch			
Volume	9,500,000 c.f.			
Rock Pressure	1850 lbs. - hrs.			
Salt Water	1395			

Red Rock		102	Brown Shale - 441	3524	3590	
White Slate	102	120	Slate & Shale	3590	3734	
Sand	120	130	Brown Shale	3734	3848	
-	130	260	White Slate	3848	3910	
Red Rock	260	275	Brown Shale	3910	3946	
White Slate	275	340	White Slate	3946	3977	
Red Rock	340	358	Brown Shale	3977	4135	
White Slate	358	440	White Slate	4135	4525	
Red Rock	440	484	Brown Shale	4525	4820	
White Slate	484	496	Black Shale - Mammals	4820	4881	
Lime	496	530	Corniferous Lime	4881	4994	
Slate	530	552	Oriskany Sand	4994	5028	
Sand	552	580	Lime - Held	5028	5033	T.D.
White Slate	580	588				
Gritty Lime	588	600				
White Slate	600	620	Gas from 4994 to 5006			
Pink Rock	620	635	" 5006 to 5012			
Sand	635	676				
White Slate	676	698				
Sand	698	722				
White Slate	722	734				
Sand	734	765				
White Slate	765	794				
Sand	794	857				
White Slate	857	928				
Sand	928	992				
Black Slate	992	1026				
Sand	1026	1064				
White Slate	1064	1090				
Sand	1090	1138				
Black Slate	1138	1285				
Sand	1285	1320				
Black Slate	1320	1344				
Salt Sand	1344	1742				
Big Lime	1742	1842				
Big Injun	1842	1876				
White Slate	1876	1891				
Sand - Squaw	1891	1909				
White Slate	1909	1919				
Gritty Lime	1919	1952				
White Slate	1952	1983				
Gritty Lime	1983	2061				
Slate & Shells	2061	2312				
Brown Shale	2312	2320				
Berea Grit	2320	2339				
Slate Shells	2339	3524				

(495)