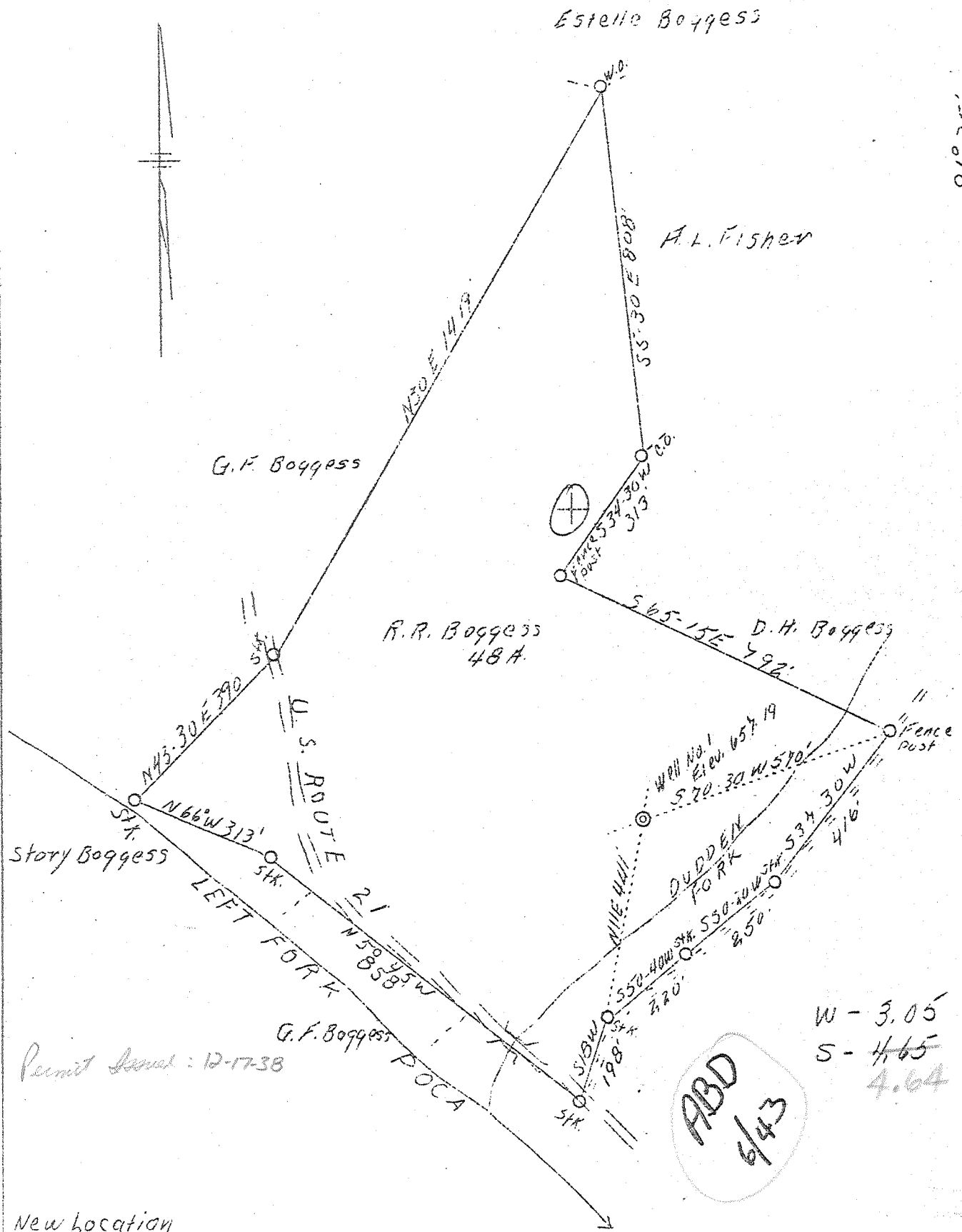


LATITUDE 38°40'

LONGITUDE 81°35'



New Location

Company	Everett Starcher, etal	STATE OF WEST VIRGINIA Department of Mines OIL & GAS DIVISION Charleston WELL LOCATION MAP File No. <u>Jac-41</u> * Denotes location of well on U. S. Topographic Maps, scale 1 to 62,500, latitude and longitude lines being represented by border lines as shown. - Denotes one inch spaces on border line of original tracing.
Address	Spencer, W. Va.	
Farm	R. R. Boggess	
Tract	-	
Acres	48	
Well (Farm) No.	One	
Elevation (SL)	657.19	
Quadrangle	Kenna C	
County	Jackson	
District	Ripley	
Engineer	L. F. Dye	
Eng. Reg. No.	804	
Date	Nov. 30, 1938	
Scale	1" - 300'	

6-6-192

WEST VIRGINIA DEPARTMENT OF MINES

OIL & GAS DIVISION

WELL RECORD

Permit No. Jac-41

Gas Well

Konna Quad.

CASING & TUBING

Company	Evoret Staresher, etal	13	120
Address	Sponcer, W. Va.	10	585
Farm	Russoll Boggess ACRES 70	8-1/4	1867
Location	Ripley Dist.	5-3/16	4860
Well No.	- ELEV. 657.19		
District	Ripley, Jackson County		
Surface & Mineral	Russoll Boggess, Konna, W. Va.		
Commenced	Dec. 28, 1938		
Completed	March 1939		
Date shot	3/23/39 - Depth Oriskany		
Open Flow	11/10ths Water in - inch		
Volume	3,500,000 c.f.		
Rock Pressure	1035 lbs. 48 hrs.		
Fresh water	70		
Slat Water	1480		

Formation Color ^{Hor} Top Base Result Formation Color ^{Hor} Top Base Result

Formation	Color	Hor	Top	Base	Result	Formation	Color	Hor	Top	Base	Result	
Soil					35	Brown Slate	-441				3483	3564
Lime			35		46	Slate & Shells					3564	3743
Red rock			46		74	Brown Shale					3743	3813
Lime & red rock			74		118	Slate shells					3813	3852
Slate			118		236	Brown shale					3852	4100
Sand			236		283	White slate					4100	4248
Red rock			283		290	Brown Shale					4248	4268
Slate			290		298	White slate					4268	4535
Red rock			298		334	Brown shale					4535	4800
slate red rock			334		446	Black shale	-Mammals				4800	4843
Lime			446		460	Corniferous Lime	-123				4843	4958
Red rock			460		484	Oriskany Sand					4958	4993
Lime			484		502							
Red rock and Lime			502		583							
Sand			583		612							
Slate			612		668							
Sand			668		714							
Slate			714		728							
Sand			728		776							
Slate			776		794							
Lime slato			794		846							
Red rock and slato			846		862							
Sand			862		946							
Slate			946		1012							
Sand			1012		1110							
Slate			1110		1176							
Sand			1176		1194							
Slate			1194		1254							
Sand			1254		1274							
Slate			1274		1295							
Sand			1295		1428							
Slate			1428		1431							
Sand			1431		1592							
Slate shells			1592		1635							
Little Lime			1635		1658							
Big Lime			1658		1794							
Injun Sand			1794		1830							
Slate			1830		1837							
Sand-Squaw			1837		1850							
Slate			1850		1858							
Lime			1858		1867							
Slate			1867		1869							
Lime			1869		1888							
Slate			1888		1912							
Lime			1912		1996							
White Slato			1996		2258							
Serea Sand			2258		2266							
Slate shells			2266		3483							

T.D.
475