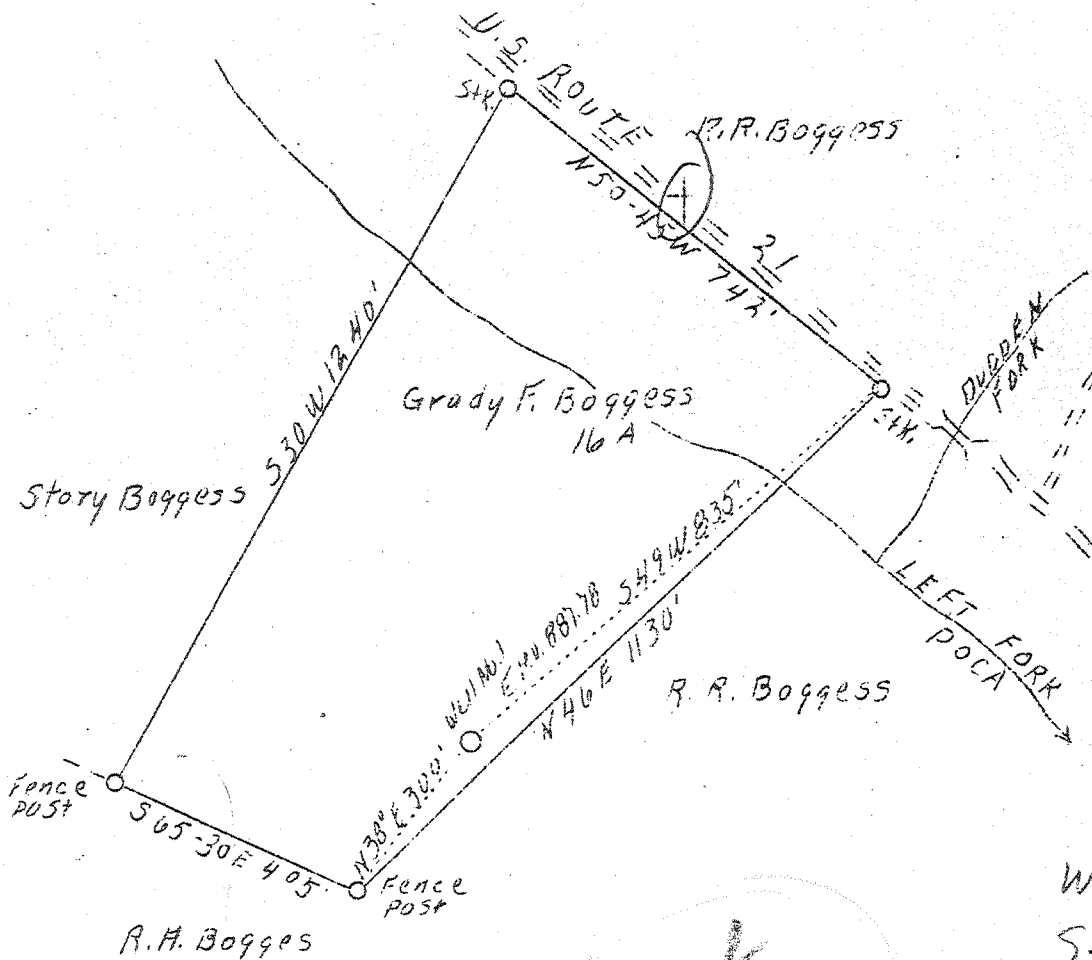


LATITUDE 38° 40'

LONGITUDE 81° 35'



W- 3.21  
S. 4.82

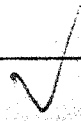
*abandoned  
Oct 31*

Permit issued 12-17-38

New location

Company	Everett Starcher, etal	STATE OF WEST VIRGINIA
Address	Spencer, W. Va.	Department of Mines
Farm	Grady F. Boggess	OIL & GAS DIVISION
Acres	16	Charleston
Well (Farm) No.	One	WELL LOCATION MAP
Elevation (SL)	887.78	File No. <u>Jac-40</u>
Quadrangle	Kenna C	
County	Jackson	
District	Ripley	
Engineer	L. F. Dye	x Denotes location of well on U. S. Topo- graphic Maps, scale 1 to 62,500, latitude and longitude lines being represented by border lines as shown.
Eng. Reg. No.	804	- Denotes one inch spaces on border line of original tracing.
Date	Nov. 30, 1938	
Scale	1" = 300'	

*Deep well 6-6-192*



WEST VIRGINIA DEPARTMENT OF MINES

OIL & GAS DIVISION

WELL RECORD

Permit No. Jac-40

Gas Well

Konna Quad.

CASING & TUBING

Company	Starcher, et al	13	62	pulled
Address	Spencer, W. Va.	10	786	"
Farm	Grady Boggess ACRES 26	8-1/4	2108	2108
Well No.	1 ELEV. 887.78	5-3/16	5054	5054
District	Ripley, Jackson County			
Surface & Mineral	Grady Boggess, Konna, W. Va.			
Commenced	March 3, 1939	5-3/16	Casing cemented	
Completed	June 6, 1939			
Date shot	6/6/39 - Depth 5180			
Open Flow	125/10ths Merc. in 5-3/16 Inch			
Volume	12,000,000 c.f.			
Rock Pressure	1800 lbs. 24 hrs.			
Salt Water	1572			

Formation Color <sup>Har</sup> TOP Base Result				Formation Color <sup>Har</sup> TOP Base Result			
Sand		50		Sand <del>say sand</del>		1485	1790
Slate	50	95		Slate Shells		1790	1820
Red Rock	95	110		Maxon Sand		1820	1860
Slate	110	160		Slate		1860	1862
Red Rock	160	175		Little Lime		1862	1896
Sand	175	200		Slate <del>P. Calc</del>		1896	1898
Slate	200	285		Big Lime		1898	1993
Red Rock	285	305		Injun Sand		1993	2029
Slate	305	400		Slate		2029	2035
Red Rock	400	408		Sand <del>Squaw</del>		2035	2045
Slate	408	420		Slate		2045	2060
Sand	420	490		Lime		2060	2074
Slate	490	530		Slate		2074	2096
Sand	530	565		Lime		2096	2106
Red Rock	565	617		Slate		2106	2111
Slate	617	640		Lime and shells		2111	2118
Lime	640	653		Slate and shells		2118	2438
Red Rock	653	660		Brown slate		2438	2465
Slate	660	670		Berea Grit		2465	2473
Lime	670	680		Lime shells		2473	2480
Slate	680	690		Slate		2480	2488
Red Rock	690	702		Lime shells		2488	2494
Lime	702	740		Slate & shells		2494	3100
Red Rock	740	780		Gray shale		3100	3680
Sand	780	800		Brown shale <del>-441</del>		3680	3765
Slate	800	820		Slate shells		3765	3797
Sand	820	850		Lime shells		3797	3805
Slate	850	870		Slate shells		3805	3960
Sand	870	900		Brown shale		3960	4020
Slate	900	910		Slate		4020	4110
Sand	910	952		Brown Shale		4110	4200
Slate	952	958		Slate shells		4200	4730
Sand	958	975		Brown Shale		4730	4987
Slate	975	985		Black Shale <del>Moravian</del>		4987	5032
Lime	985	1028		Corniferous Lime <del>-463</del>		5032	5150
Slate	1028	1038		Oriskany Sand		5150	5184
Lime	1038	1080					
Slate	1080	1115					
Lime	1115	1125					
Slate	1125	1135					
Sand	1135	1160					
Slate	1160	1250					
Lime	1250	1300					
Slate	1300	1350					
Lime	1350	1360					
Slate	1360	1442					
Sand	1442	1475					
Slate	1475	1485					

Total D

475