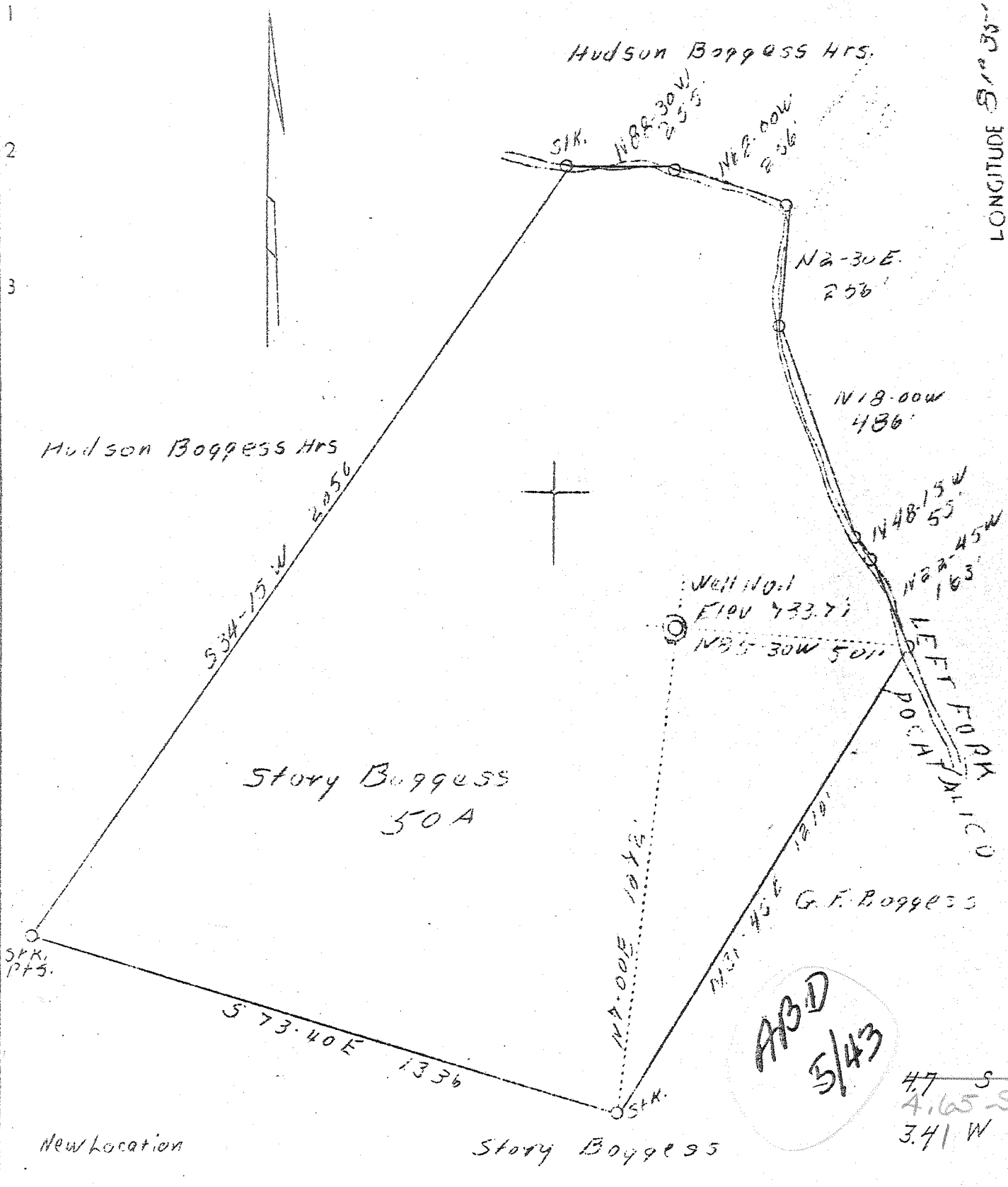


LATITUDE 38° 40'

LONGITUDE 81° 35'



Company Everett Starcher et al
 Address Spencer, W. Va.
 Farm Story Boggess
 Tract -
 Acres 50
 Well (Farm) No. One
 Elevation (SP) 733.77
 Quadrangle Sissonsville N. W. (should be Kenna) S.W.
 County Jackson
 District Ripley
 Engineer L. F. Dye
 Eng. Reg. No. 804
 Date July 30, 1938
 Scale 1" = 300'

STATE OF WEST VIRGINIA
 Department of Mines
 OIL & GAS DIVISION
 Charleston

WELL LOCATION MAP

File No. Jac-38

x Denotes location of well on U. S. Topographic Maps, scale 1 to 62,500, latitude and longitude lines being represented by border lines as shown.

- Denotes one inch spaces on border line of original tracing.

Deep well 6-6-192

WEST VIRGINIA DEPARTMENT OF MINES

OIL & GAS DIVISION

WELL RECORD

Permit No. Jac-38

Gas Well

Sissonville N. W. Quad.

CASING & TUBING

Company	Everett Starcher, et al	16	19	
Address	Spencer, W. Va.	13	152	
Farm	Story Boggess ACRES 50	10	576	
Location	Ripley Dist. Jackson Co.	8-1/4	1921	1921
Well No.	One ELEV. 733.77	6-5/8	4912	4912
District	Ripley - Jackson County	2	5056	5056
Surface & Mineral	Story Boggess, Kenna, W. Va.			
Drilling commenced	Aug. 29, 1938			
Drilling completed	Dec. 28, 1938			
Open Flow	25/10ths Water in 3 inch 28/10ths Merc. in 7 inch			7" casing cemented. No coal.
Volume	9,295,000 c.f.			
Rock Pressure	1870 lbs. - hrs.			
Salt Water	1466			

Formation Color	Hor	Top	Base	Result	Formation Color	Hor	Top	Base	Result
Soil		0	10		Slate		1882	1885	
Red Rock		10	30		Broken sand		1885	1900	
Blue Sand		30	40		Slaty Lime		1900	1912	
Red Rock		40	135		Sand		1912	1916	
Blue rock		135	175		Slate&Lime		1916	2305	
White rock		175	200		Berea shells		2305	2313	
Red rock		200	225		Slate&shells		2315	3525	
White slate		225	265		Brown shale -441		3525	3580	
Blue slate		265	290		Slate&shale		3580	3865	
Sand		290	340		White slate		3865	3910	
White slate		340	360		Brown shale some slate		3910	4135	
Lime		360	425		White slate		4135	4277	
Red rock		425	492		Brown shale		4277	4297	
White slate		492	510		White slate		4297	4600	
Red rock		510	518		Brown shale		4600	4780	
White slate		518	538		White slate		4780	4808	
Lime		538	550		Brown shale		4808	4866	
Red rock		550	568		Black shale -455		4866	4896	
Lime		568	650		Corniferous lime A63		4896	5016	
Sand		650	670		Oriskany sand		5016	5056	
Black slate		670	685						
White slate		685	700		Total depth			5056	
Sand		700	720						
White slate		720	725						
Sand		725	778						
White slate		778	788						
Sand		788	840						
Slate		840	862						
Gritty Lime		862	895						
Slate		895	905						
Lime		905	940						
Slate		940	950						
Sand		950	1014						
Slate shells		1014	1074						
Sand		1074	1110						
Slate shells		1110	1128						
Sand		1128	1150						
Black slate		1150	1200						
Gritty lime		1200	1245						
Slate		1245	1267						
Sand		1267	1340						
Black slate		1340	1360						
Sand		1360	1665						
Shells		1665	1670						
Lime		1670	1705						
Sand		1705	1743						
Big Lime		1743	1844						
Injun Sand		1844	1882						