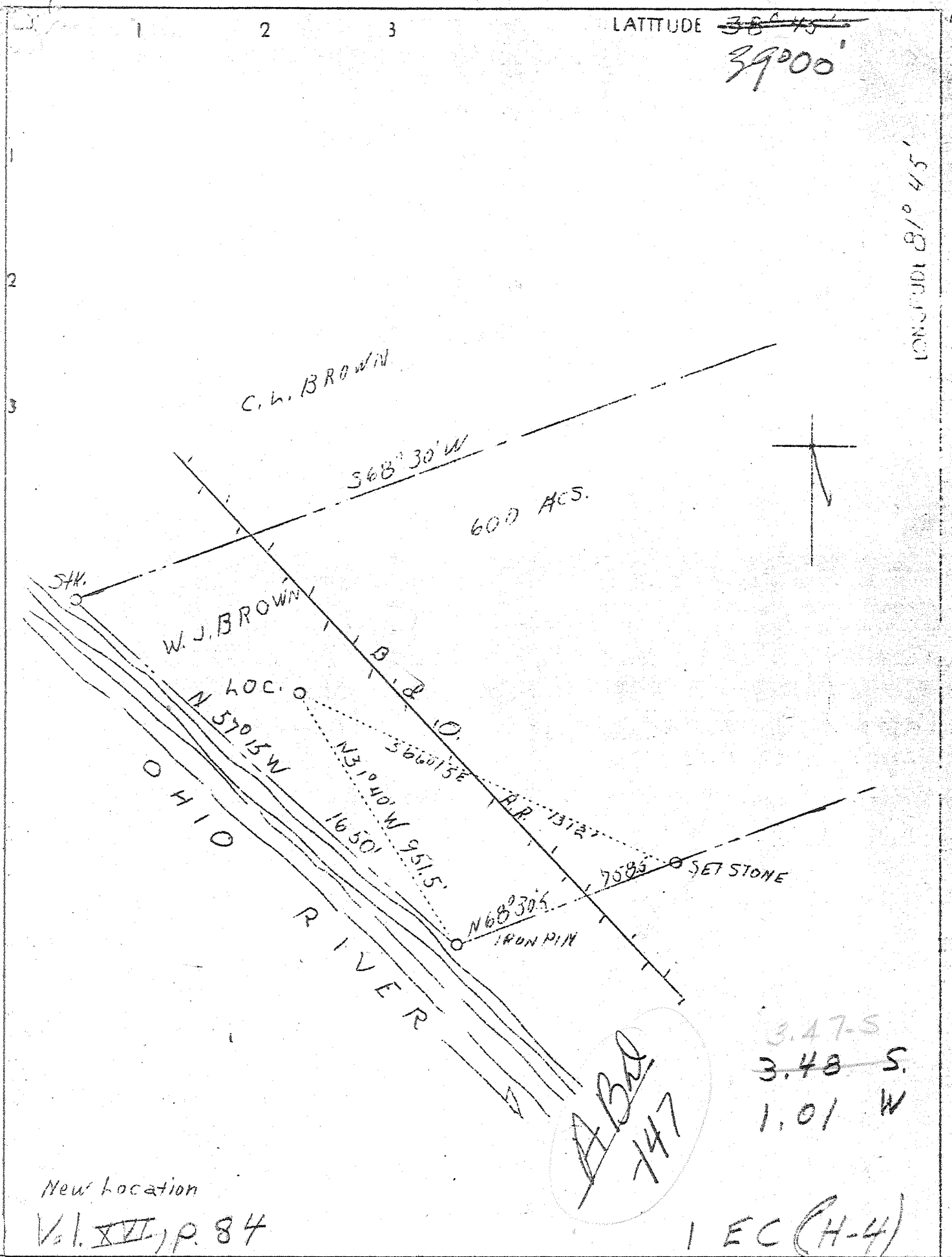


P

LATITUDE ~~38° 45'~~

39° 00'

LONGITUDE 81° 45'



New Location

Vol. XVI, p. 84

|                             |                    |
|-----------------------------|--------------------|
| Company                     | Joe Rubin et als.  |
| Address                     | Ravenswood, W. Va. |
| Farm                        | W. J. Brown        |
| Tract                       | 600 Acres          |
| Lease No.                   |                    |
| Well (Farm) No.             | 1                  |
| Serial No.                  |                    |
| Elevation (Spirit Level)    | 586.40             |
| Quadrangle                  | Ravenswood - NE    |
| County                      | Jackson            |
| District                    | Ravenswood         |
| Engineer                    | C. E. Krebs        |
| Engineer's Registration No. | 9                  |
| File No.                    | 11,544             |
| Drawing No.                 |                    |
| Date                        | 5-21-38            |
| Scale                       | 1" = 400'          |

STATE OF WEST VIRGINIA  
 Department of Mines  
 OIL & GAS DIVISION

WELL LOCATION MAP

File No. Jac-37

Denotes location of well on U. S. Topographic Maps, scale 1 to 62,500, latitude and longitude lines being represented by border lines as shown.

Denotes one inch spaces on border line of original tracing.

Discovery well  
 Samples 1-6 (159)  
 20 J (3908-4280)

Deep Well

WEST VIRGINIA DEPARTMENT OF MINES

OIL & GAS DIVISION

WELL RECORD

Permit No. Jac-37

Gas Well

Ravenswood Quad.

CASING & TUBING

|                    |                                     |                            |      |      |
|--------------------|-------------------------------------|----------------------------|------|------|
| Company            | Joe Rubin,                          | 13                         | 119  |      |
| Address            | 1900 - 19th St., Parkersburg, W.Va. | 10                         | 500  | All  |
| Farm               | W. J. Brown ACRE 600                | 8-1/4                      | 1124 | left |
| Location           | Ohio River                          | 6-5/8                      | 2018 | in   |
| Well No.           | One ELEV. 586.40                    | 5-3/16                     | 4198 | well |
| District           | Ravenswood Ind. County Jackson      |                            |      |      |
| Surface & Mineral  | Brown Heirs, Ravenswood, W. Va.     | No packer.                 |      |      |
| Drilling commenced | May 10, 1938                        |                            |      |      |
| Drilling completed | Oct. 5, 1938                        | 4198' of 5" casing cement- |      |      |
| Date shot          | Aug. 23, 1938 - Depth 4280'         | ed on July 27, 1938        |      |      |
| Open Flow          | 50/10ths water in 2-inch            |                            |      |      |
| Volume             | 337,000 c. f.                       | No coal                    |      |      |
| Rock Pressure      | 1600 lbs. 24 hrs.                   |                            |      |      |
| Fresh water        | 80 - 1175                           |                            |      |      |
| Salt Water         | -                                   |                            |      |      |

*fresh? maybe maybe not*

Formation Color <sup>Har</sup> Top Base Result Formation Color <sup>Har</sup> Top Base Result

|                        |    |      |      |  |  |  |  |
|------------------------|----|------|------|--|--|--|--|
| Soil                   |    | 0    | 15   |  |  |  |  |
| Gravel                 |    | 15   | 70   |  |  |  |  |
| Sand                   |    | 70   | 80   | Water 80'                                      |  |  |  |
| Slate                  |    | 80   | 130  |  |  |  |  |
| Red                    |    | 130  | 150  |  |  |  |  |
| Slate                  |    | 150  | 230  |  |  |  |  |
| Red                    |    | 230  | 265  |  |  |  |  |
| Sand - Pittsburgh      |    | 275  | 342  |  |  |  |  |
| Slate                  |    | 265  | 275  |  |  |  |  |
| Slate                  |    | 342  | 418  |  |  |  |  |
| Sand                   |    | 418  | 423  |  |  |  |  |
| Slate                  |    | 424  | 450  |  |  |  |  |
| Sand                   |    | 450  | 465  |  |  |  |  |
| Slate                  |    | 465  | 520  | 10" pipe @ 500'                                |  |  |  |
| Sand                   |    | 520  | 545  |  |  |  |  |
| Red                    |    | 545  | 605  |  |  |  |  |
| Slate                  |    | 605  | 635  |  |  |  |  |
| Red                    |    | 635  | 755  |  |  |  |  |
| Sand                   |    | 755  | 785  |  |  |  |  |
| Slate                  |    | 785  | 805  |  |  |  |  |
| Red                    |    | 805  | 825  |  |  |  |  |
| Sand                   |    | 825  | 935  |  |  |  |  |
| Slate                  |    | 935  |      |  |  |  |  |
| Sand                   |    |      | 1045 |  |  |  |  |
| Slate                  |    | 1045 | 1085 |  |  |  |  |
| Sand                   |    | 1085 | 1120 |  |  |  |  |
| Slate                  |    | 1120 | 1380 | 8" pipe @ 1124'                                |  |  |  |
| Sand                   |    | 1380 | 1433 | Water 1175 - 2 bailers Hole full water         |  |  |  |
| Lime - <del>blue</del> |    | 1433 | 1548 | Injun top - 1548                               |  |  |  |
| Slate                  |    | 1548 | 1987 |  |  |  |  |
| Brown Coffee Shale     |    | 1987 | 2002 |  |  |  |  |
| Corea Sand             |    | 2002 | 2007 | Gas 3075' in sand - 3 or 4 thousand cubic feet |  |  |  |
| Blue Sand              |    | 2007 | 3145 |  |  |  |  |
| Light Brown Shale      | AA | 3145 | 3220 | Brown Shale 3995 4157                          |  |  |  |
| Blue Slate             |    | 3220 | 3408 | Corniferous Lime 4157                          |  |  |  |
| Shale brown            |    | 3408 | 3490 | Top Criskany Sand 4260                         |  |  |  |
| Slate blue             |    | 3490 | 3520 | Total depth 4300                               |  |  |  |
| Brown Shale            |    | 3520 | 3635 |  |  |  |  |
| Blue Slate             |    | 3635 | 3995 |  |  |  |  |

4157 4260  
586 586  
3571 3674

*Geolog Sande Studies*