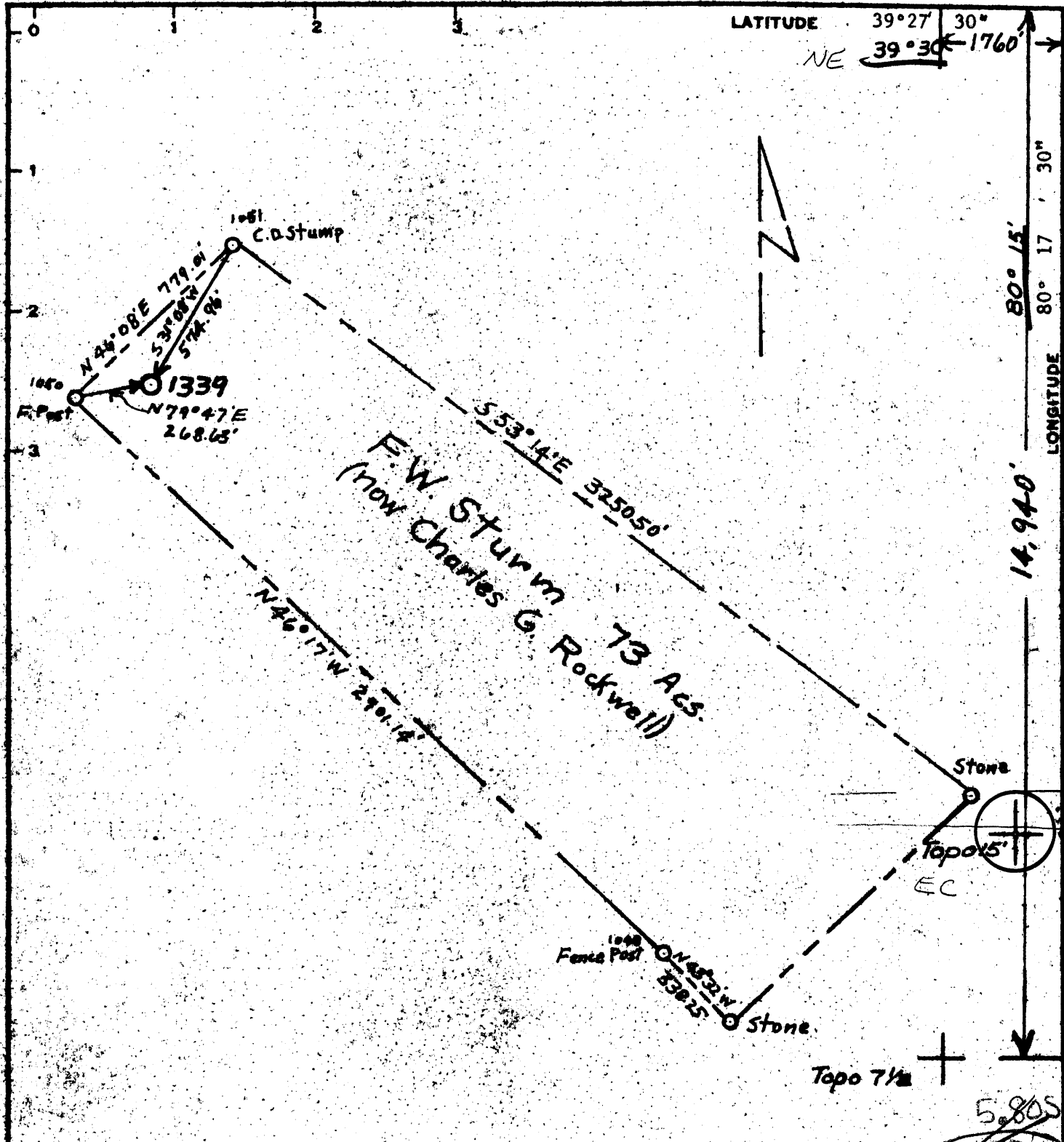


4, 27, 76 *R*



Minimum Error of Closure 1 in 200

Source of Elevation Company survey stations tied into U.S.G.S. network

5,805
0.33W
2.8725

I, the undersigned, hereby certify that this map is correct to the best of my knowledge and belief and shows all the information required by paragraph 6 of the rules and regulations of the oil and gas section of the mining laws of West Virginia.

Signed: *Donald D. Brown*

- Fracture
- New Location
- Drill Deeper
- Abandonment

Map No. Squares: N S E W

Company Consolidation Coal Company
 Address P. O. Box 1632
 Farm F. W. Sturm (Now Chas. G. Rockwell)
 Tract Acres 73 Lease No.
 Well (Farm) No. Serial No. 1339
 Elevation (Spirit Level) 1363.2 *EC/NE*
 Quadrangle Shinnston 7.5"
 County Harrison District
 Engineer Donald D. Brown
 Engineer's Registration No.
 File No. Drawing No.
 Date 4/26/76 Scale 1" = 200'



STATE OF WEST VIRGINIA
 DEPARTMENT OF MINES
 OIL AND GAS DIVISION
 CHARLESTON

WELL LOCATION MAP
 FILE NO. **HAR-1982-A**

* Denotes location of well on United States Topographic Maps, scale 1 to 62,500, latitude and longitude lines being represented by border lines as shown.

- Denotes one inch spaces on border line of original tracing.

47-033 MAY 6 1976