

Minimum Error of Closure 1' in 200'
 Source of Elevation Levels from Consolidated Gas Supply Corp. Well No. 7280 - Elev. 1070'
 "I, the undersigned, hereby certify that this map is correct to the best of my knowledge and belief and shows all the information required by paragraph 6 of the rules and regulations of the oil and gas section of the mining laws of West Virginia."

- New Location
- Drill Deeper
- Abandonment

Map Sheet 44 SII E13 F.B. 662 - P 5-6

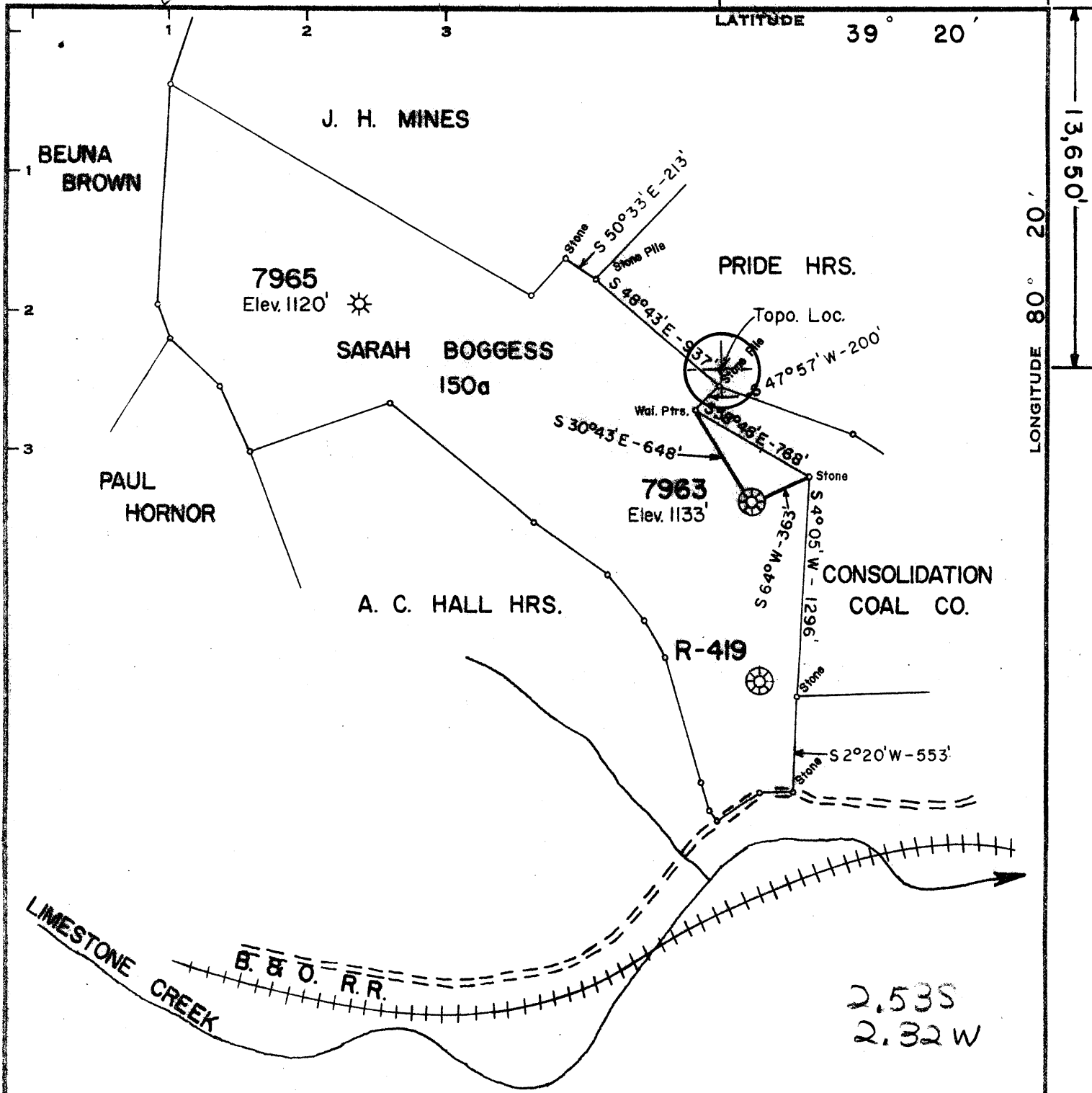
Company CONSOLIDATED GAS SUPPLY CORP.
 Address CLARKSBURG, W. VA.
 Farm SARAH BOGGESS
 Tract Acres 150 Lease No. 52702
 Well (Farm) No. 7963 Serial No. 7963
 Elevation (Spirit Level) 1133'
 Quadrangle CLARKSBURG, W. VA. SC
 County HARRISON District COAL
 Engineer Jackson M. Jarvis
 Engineer's Registration No. 2397
 File No. Drawing No.
 Date 11-19-74 Scale 1" = 800'

STATE OF WEST VIRGINIA
 DEPARTMENT OF MINES
 OIL AND GAS DIVISION
 CHARLESTON

WELL LOCATION MAP
 FILE NO. Har-1962-A

+ Denotes location of well on United States Topographic Maps, scale 1 to 62,500, latitude and longitude lines being represented by border lines as shown.
 - Denotes one inch spaces on border line of original tracing.

47-033 DEC 5 1974



Minimum Error of Closure 1' in 200'
 Source of Elevation Levels from Consolidated Gas Supply Corp. Well No. 7280 - Elev. 1070'
 "I, the undersigned, hereby certify that this map is correct to the best of my knowledge and belief and shows all the information required by paragraph 6 of the rules and regulations of the oil and gas section of the mining laws of West Virginia."

New Location
 Drill Deeper
 Abandonment

Map Sheet 44 S11 E13 F.B. 662 - P. 5-6

Company CONSOLIDATED GAS SUPPLY CORP.
 Address CLARKSBURG, W. VA.
 Farm SARAH BOGGESS
 Tract Acres 150 Lease No. 52702
 Well (Farm) No. 7963 Serial No. 7963
 Elevation (Spirit Level) 1133'
 Quadrangle CLARKSBURG, W. VA. SC
 County HARRISON District COAL
 Engineer Jackson M. Jarvis
 Engineer's Registration No. 2397
 File No. Drawing No.
 Date 11-19-74 Scale 1" = 800'

STATE OF WEST VIRGINIA
 DEPARTMENT OF MINES
 OIL AND GAS DIVISION
 CHARLESTON

WELL LOCATION MAP
 FILE NO. Har-1960-A
 Corrected Permit Number NOW 1962
 + Denotes location of well on United States Topographic Maps, scale 1 to 62,500, latitude and longitude lines being represented by border lines as shown.
 — Denotes one inch spaces on border line of original tracing.
47-033