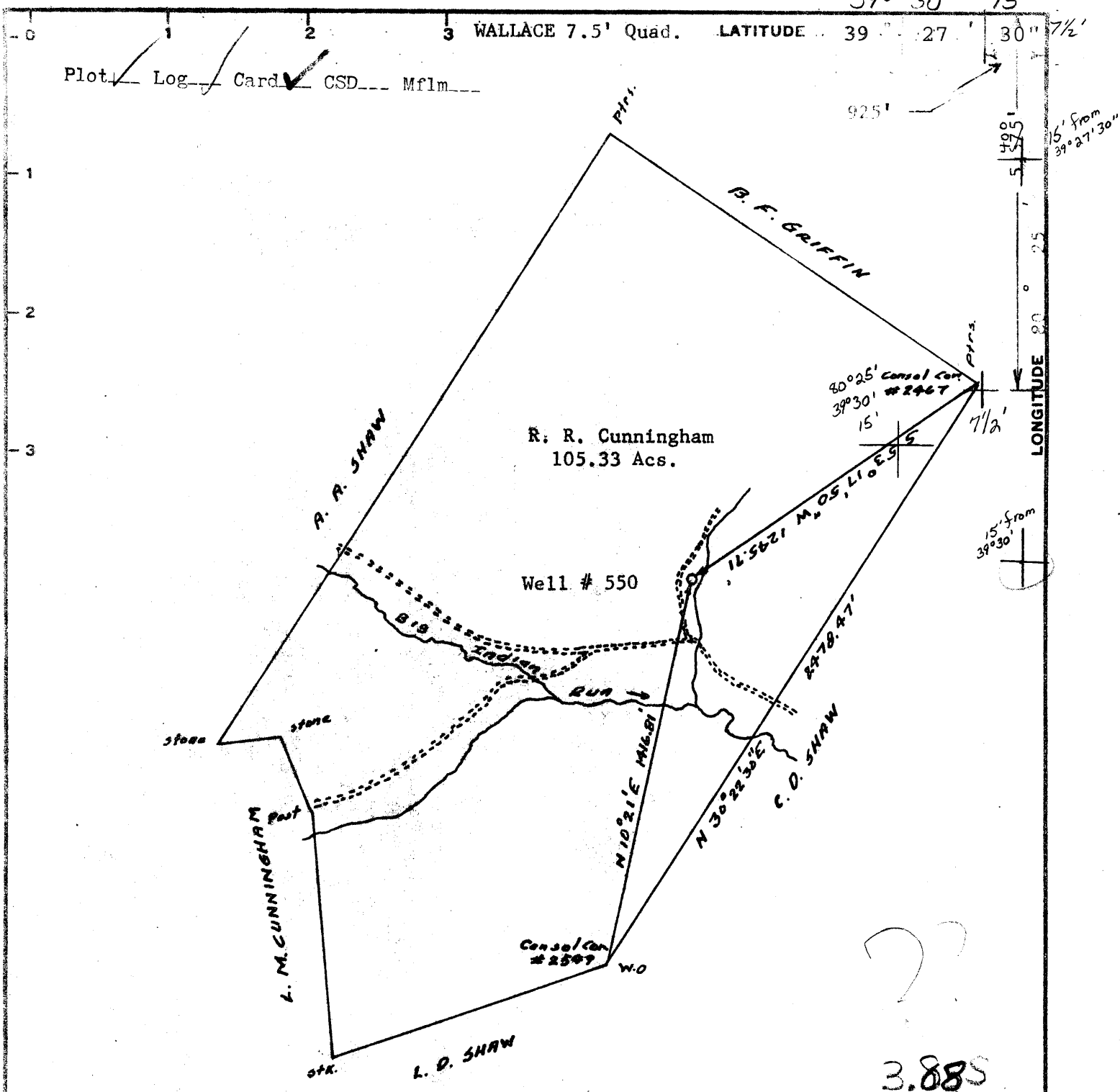


39° 30' 15"

WALLACE 7.5' Quad.

LATITUDE 39° 27' 30" 7/2'

Plot Log Card CSD Mflm



3.885
0.16 W

Minimum Error of Closure 1' in 2000'

Source of Elevation U.S.G.S B.M. @ OAKDALE 987.95'

- Fracture
- New Location
- Drill Deeper
- Abandonment REPLUG

I, the undersigned, hereby certify that this map is correct to the best of my knowledge and belief and shows all the information required by paragraph 6 of the rules and regulations of the oil and gas section of the mining laws of West Virginia.

Signed: B. J. McCormley
Squares: N (S) (E) W

Mountaineer Coal Co. to Replug
 Company Well on E. F. Amsler Surface
 Address P. O. Box 1632 Fairmont, W. Va. 26554
 Farm R. R. Cunningham
 Tract _____ Acres 105.33 Lease No. _____
 Well (Farm) No. 1 Serial No. 550
 Elevation (Spirit Level) 1105.4 NW
 Quadrangle Wallace 7.5', Clarksburg 15'
 County Harrison District Eagle
 Engineer B. J. McCormley
 Engineer's Registration No. 2067
 File No. _____ Drawing No. _____
 Date 9/24/74 Scale 1"=500'

STATE OF WEST VIRGINIA
 DEPARTMENT OF MINES
 OIL AND GAS DIVISION
 CHARLESTON

WELL LOCATION MAP
 FILE NO. Har-1961-A

+ Denotes location of well on United States Topographic Maps, scale 1 to 24,000, latitude and longitude lines being represented by border lines as shown.
 - Denotes one inch spaces on border line of original tracing. 47-033