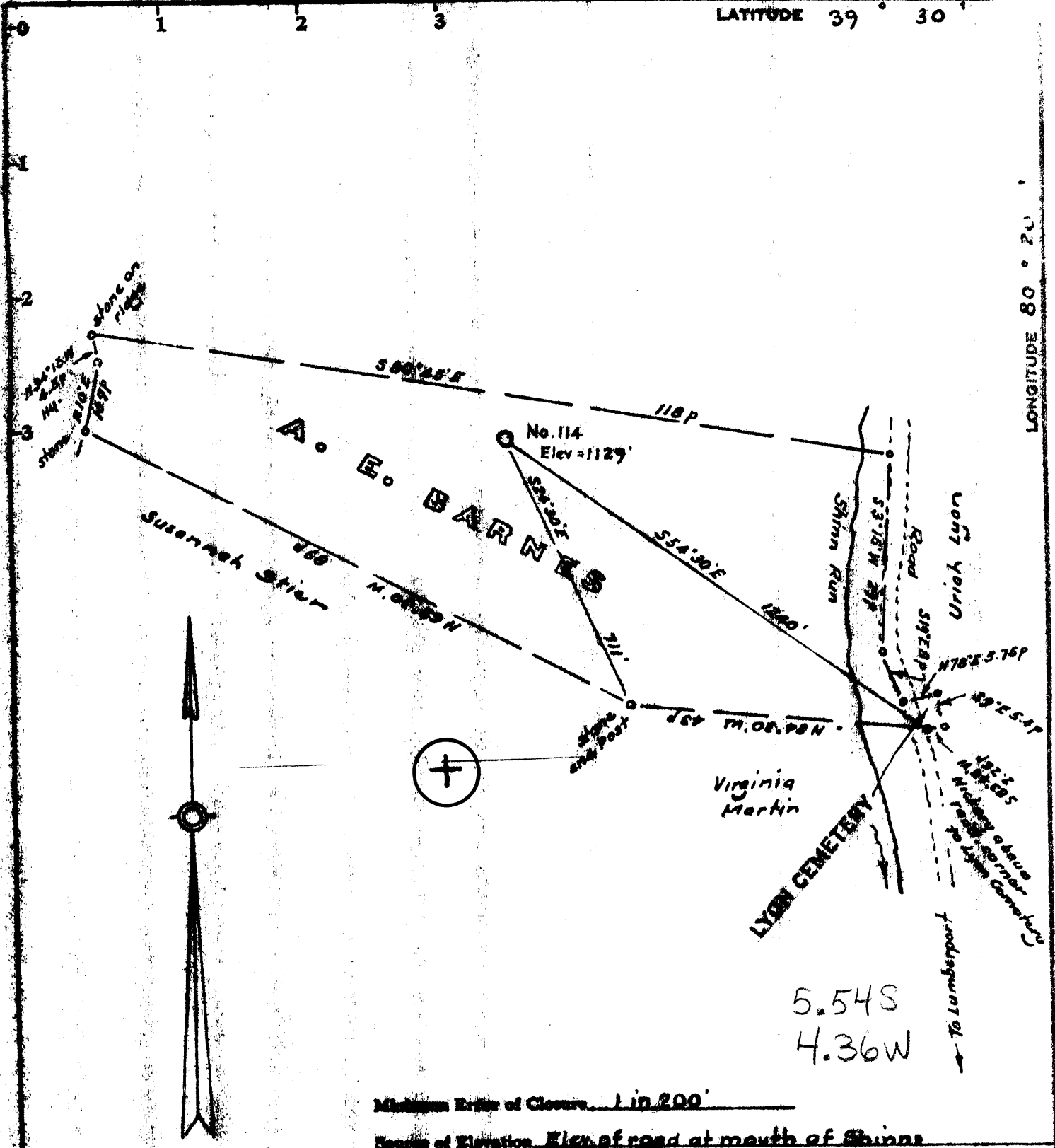


LATITUDE 39° 30'

LONGITUDE 80° 20'



5.54S  
4.36W

Minimum Error of Closure 1 in 200'

Source of Elevation Elev. of road at mouth of Shinn

Run - 1011

I, the undersigned, hereby certify that this map is correct to the best of my knowledge and shows all the information required by paragraph 6 of the rules and regulations of the oil and gas section of the mining laws of West Virginia.

- Feature
- New Location
- Drill Deep
- Abandoned  *insert 7/23/73*

Signed: *[Signature]*  
Squares: N S E W

Company GARDNER NATURAL GAS CO.  
 Address Murkoff, Ewing  
 Farm A. E. Barnes  
 Tract Acres 24 Lease No. 8825  
 Well (Farm) No. 202 State No. 114  
 Elevation (Spirit Level) 1129  
 Quadrangle Clocksburg NC  
 County Harrison District Engle  
 Engineer *[Signature]*  
 Engineer's Registration No. 1223  
 File No. \_\_\_\_\_ Drawing No. \_\_\_\_\_  
 Date July 17, 1973 Scale 1" = 200 feet = 330'

**STATE OF WEST VIRGINIA**  
 DEPARTMENT OF MINES  
 OIL AND GAS DIVISION  
 CHARLESTON

**WELL LOCATION MAP**

FILE NO. Ham-1935-11

+ Denotes location of well on United States Topographic Maps, scale 1 to 62,500, latitude and longitude lines being represented by border lines as shown.

- Denotes one inch spaces on border line of original tracing.

47-033