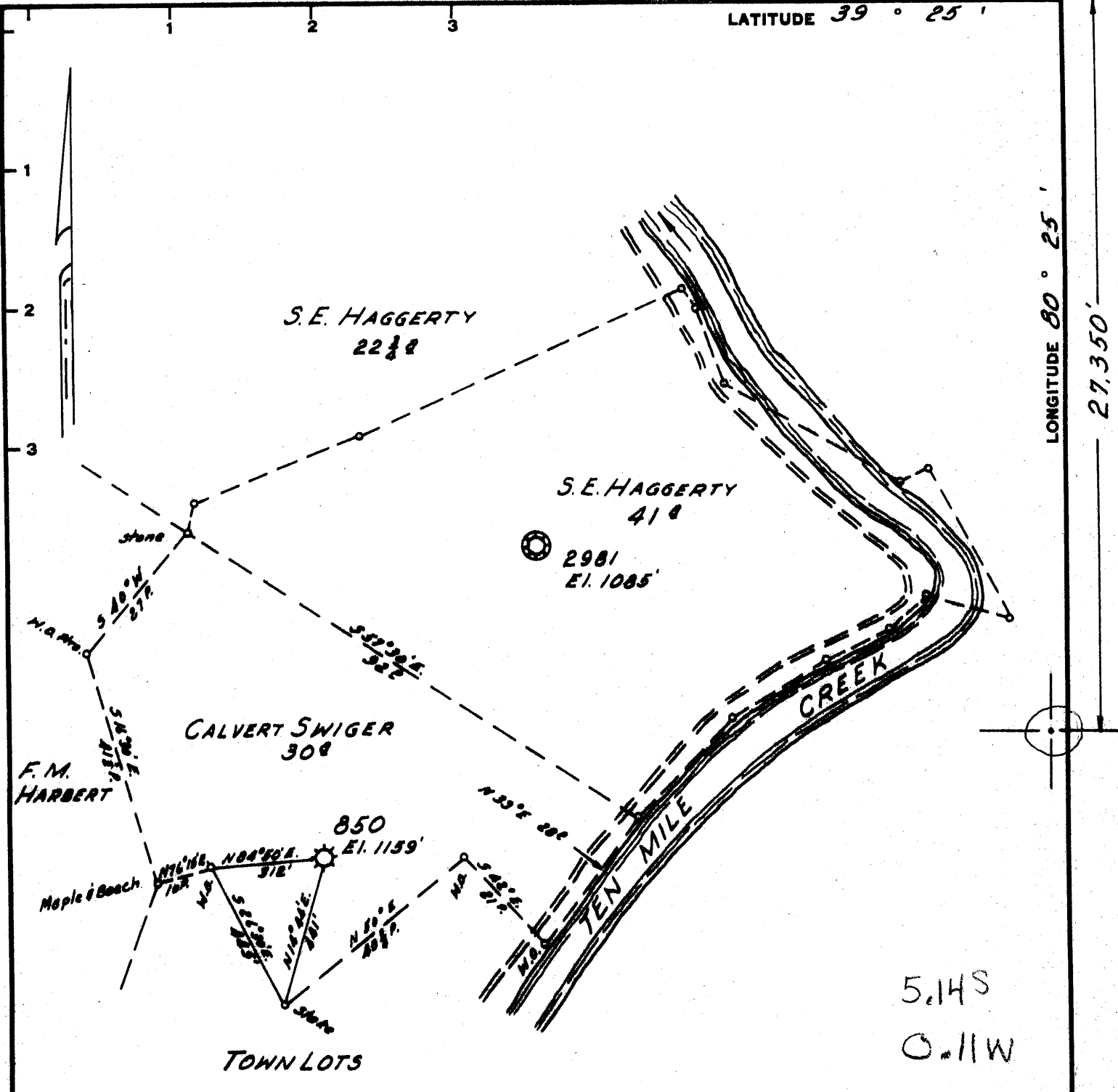


LATITUDE 39° 25'

LONGITUDE 80° 25'

27,350'



5.14S
0.11W

Minimum Error of Closure 1" IN 200'
 Source of Elevation CONSOLIDATED GAS SUPPLY CORP. WELL # 2981 ELEVATION 1085'
 "I, the undersigned, hereby certify that this map is correct to the best of my knowledge and belief and shows all the information required by paragraph 6 of the rules and regulations of the oil and gas section of the mining laws of West Virginia."

New Location
 Drill Deeper
 Abandonment

MAP SH. 44-38E11, F.B. 517 R 23-26

Company CONSOLIDATED GAS SUPPLY CORP
 Address CLARKSBURG, W. VA.
 Farm CALVERT SWIGER
 Tract _____ Acres 30 Lease No. 5438
 Well (Farm) No. _____ Serial No. 850
 Elevation (Spirit Level) 1159'
 Quadrangle CLARKSBURG, W.C.
 County HARRISON District SARDIS
 Engineer JACKSON M. JENNIS
 Engineer's Registration No. 2397
 File No. _____ Drawing No. _____
 Date AUG. 25, 1966 Scale 1" = 400'

STATE OF WEST VIRGINIA
 DEPARTMENT OF MINES
 OIL AND GAS DIVISION
 CHARLESTON

WELL LOCATION MAP
 FILE NO. HAR-1845-A

+ Denotes location of well on United States Topographic Maps, scale 1 to 62,500, latitude and longitude lines being represented by border lines as shown.
 - Denotes one inch spaces on border line of original tracing.