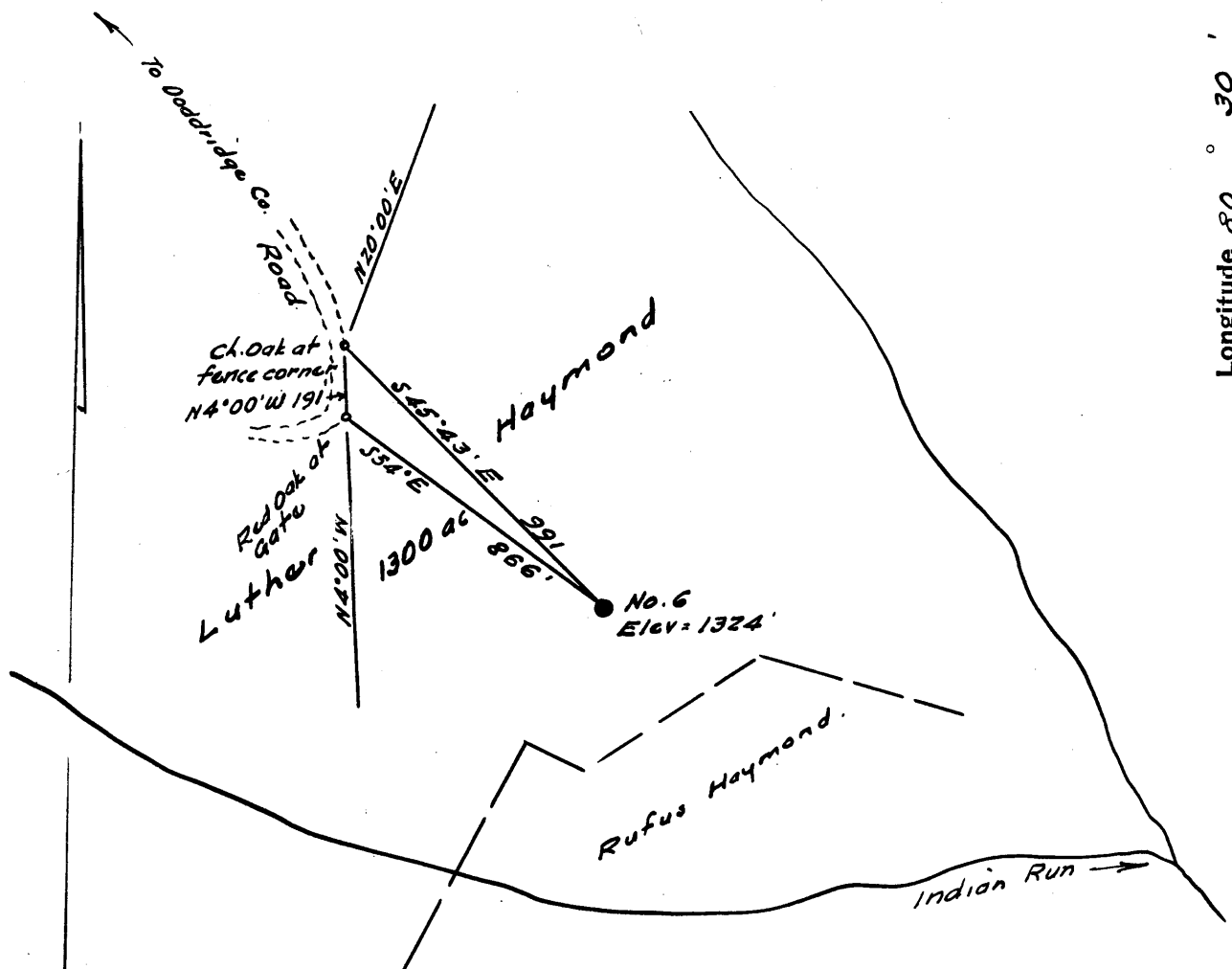


Latitude 39° 20'

Longitude 80° 30'



0.64S  
2.55W

New Location

Drill Deeper

Abandonment

Company William Cassady

Address 4303 Whitel Drive, Vienna, W. Va.

Farm L. Haymond

Tract \_\_\_\_\_ Acres 1300 Lease No. \_\_\_\_\_

Well (Farm) No. Six Serial No. \_\_\_\_\_

Elevation (Spirit Level) 1324

Quadrangle Centerpoint

County Harrison District Tenmile

Engineer W. S. Hoelz

Engineer's Registration No. 1227

File No. \_\_\_\_\_ Drawing No. \_\_\_\_\_

Date Nov. 2, 1962 Scale 1" = 500'

STATE OF WEST VIRGINIA  
DEPARTMENT OF MINES  
OIL AND GAS DIVISION  
CHARLESTON

WELL LOCATION MAP  
FILE NO. Har - 1804-A

+ Denotes location of well on United States Topographic Maps, scale 1 to 62,500, latitude and longitude lines being represented by border lines as shown.

- Denotes one inch spaces on border line of original tracing.