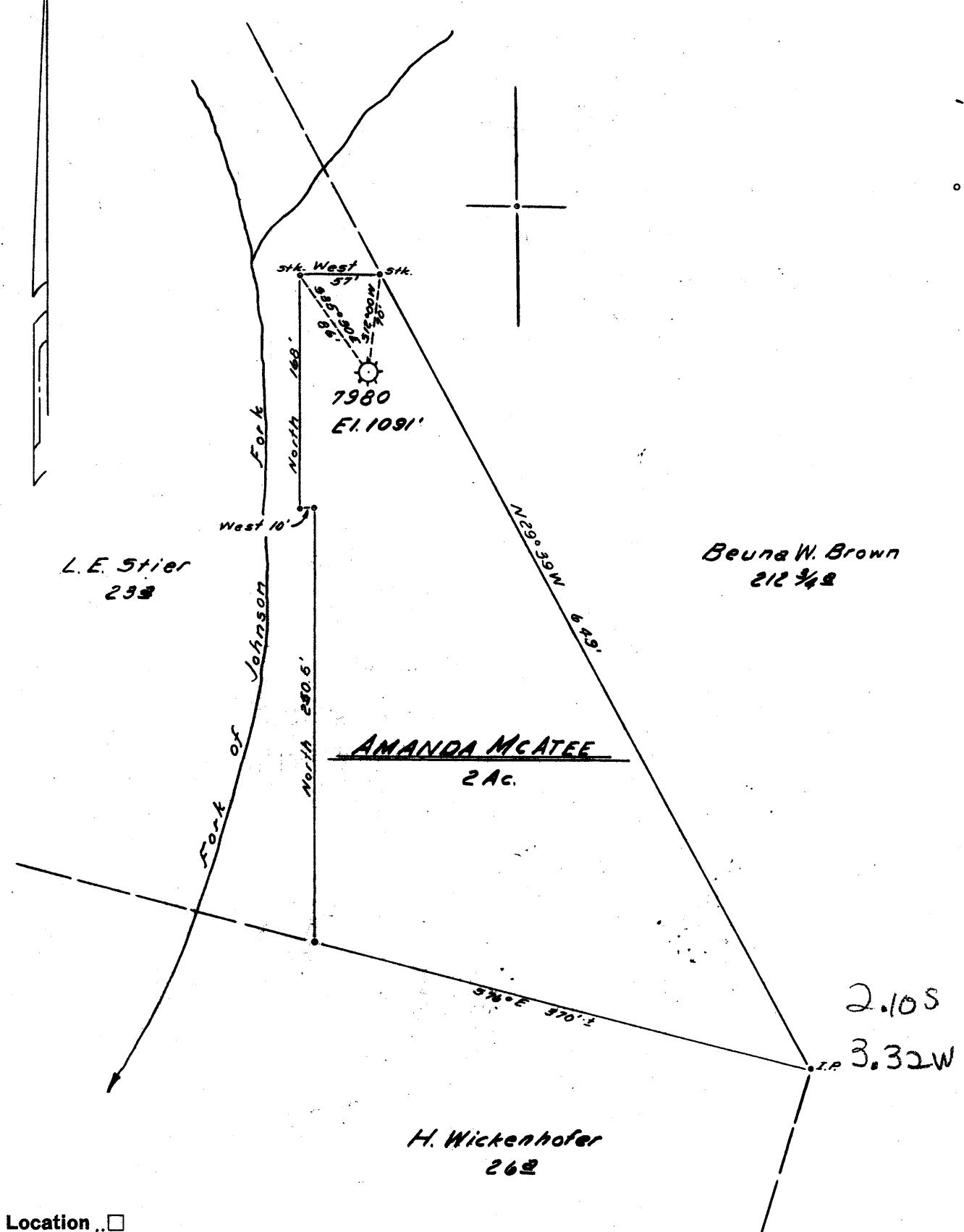


Latitude 39° 20'

Longitude 80° 20'



New Location ..   
 Drill Deeper .....   
 Abandonment .....

Map Sheet 44, 5-11 E-12 F.B. 1196 P.8 of 9

Company HOPE NATURAL GAS CO.  
 Address CLARKSBURG, W.VA.  
 Farm AMANDA MCATEE  
 Tract \_\_\_\_\_ Acres 2 Lease No. 52713  
 Well (Farm) No. \_\_\_\_\_ Serial No. 7980  
 Elevation (Spirit Level) 1091'  
 Quadrangle CLARKSBURG  
 County HARRISON District COAL  
 Engineer Guy H. Bradley  
 Engineer's Registration No. 2429  
 File No. \_\_\_\_\_ Drawing No. \_\_\_\_\_  
 Date 10-31-60 Scale 1" = 100'

STATE OF WEST VIRGINIA  
 DEPARTMENT OF MINES  
 OIL AND GAS DIVISION  
 CHARLESTON

**WELL LOCATION MAP**  
 FILE NO. HAR-1800-A

+ Denotes location of well on United States Topographic Maps, scale 1 to 62,500, latitude and longitude lines being represented by border lines as shown.  
 - Denotes one inch spaces on border line of original tracing.