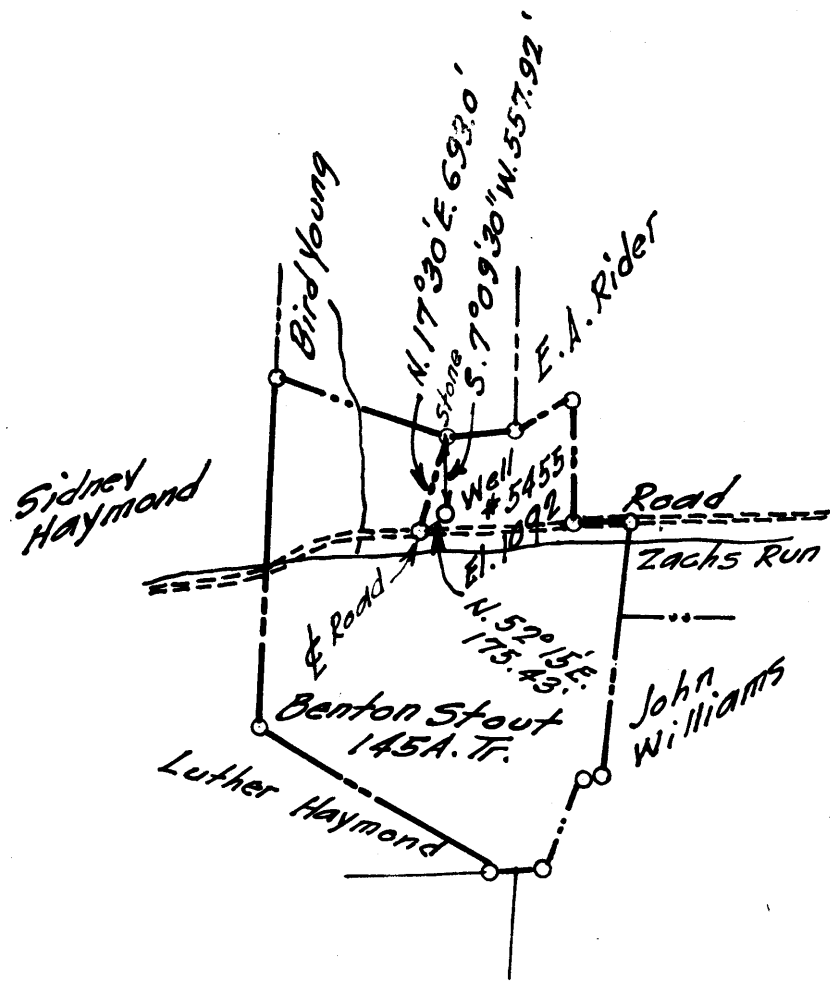


2

3



2.335

1.76W

- New Location..
- Drill Deeper.....
- Abandonment.....

Company	<u>A. M. Snider</u>
Address	<u>60 Sunset Dr, Fairmont, W. Va.</u>
Farm	<u>Benton Stout</u>
Tract	Acres <u>145±</u> Lease No. _____
Well (Farm No.)	<u>5455</u> Serial No. _____
Elevation (Spirit Level)	<u>1092</u>
Quadrangle	<u>Weston</u>
County	<u>Harrison</u> District <u>ELK</u>
Engineer	<u>Dennis N. Hefner</u>
Engineer's Registration No.	<u>1868</u>
File No.	<u>A.M.S.</u> Drawing No. <u>5</u>
Date	<u>Nov. 19, 1958</u> Scale <u>1" = 80 Poles</u>

STATE OF WEST VIRGINIA  
DEPARTMENT OF MINES  
OIL AND GAS DIVISION  
CHARLESTON

WELL LOCATION MAP  
FILE NO. HRR-1718-A

+ Denotes location of well on United States Topographic Maps. Scale 1 to 62,500, latitude and longitude lines being represented by border lines as shown.  
- Denotes one inch spaces on border line of original tracing.



1590

STATE OF WEST VIRGINIA  
DEPARTMENT OF MINES  
OIL AND GAS DIVISION

Quadrangle Weston

Permit No. 1718-A

WELL RECORD

Oil or Gas Well Gas  
(KIND)

Company Wilhelm and Jackson, Inc.  
 Address 508 Buckhannon Ave. Clarksburg, W. Va.  
 Farm Benton Stout Acres 145  
 Location (waters) Zacks Run  
 Well No. 5455 Elev. 1092  
 District Elk County Harrison  
 The surface of tract is owned in fee by Benton Stout  
 Address Quiet Dell, W. Va.  
 Mineral rights are owned by Benton Stout  
 Address Quiet Dell, W. Va.  
 Drilling commenced NR  
 Drilling completed NR  
 Date Shot \_\_\_\_\_ From \_\_\_\_\_ To \_\_\_\_\_  
 With \_\_\_\_\_  
 Open Flow \_\_\_\_\_ /10ths Water in \_\_\_\_\_ Inch  
 \_\_\_\_\_ /10ths Merc. in \_\_\_\_\_ Inch  
 Volume \_\_\_\_\_ Cu. Ft.  
 Rock Pressure \_\_\_\_\_ lbs. \_\_\_\_\_ hrs.  
 Oil \_\_\_\_\_ bbls., 1st 24 hrs.  
 WELL ACIDIZED \_\_\_\_\_  
 WELL FRACTURED \_\_\_\_\_

Casing and Tubing	Used in Drilling	Left in Well	Packers
Size			Kind of Packer
16			
13			
10	170'		Size of
8 1/4	800'		
6 5/8	1200'		Depth set
5 3/16			
3			Perf. top
2	1671'		Perf. bottom
Liners Used			Perf. top
			Perf. bottom

CASING CEMENTED \_\_\_\_\_ SIZE \_\_\_\_\_ No. Ft. \_\_\_\_\_ Date \_\_\_\_\_

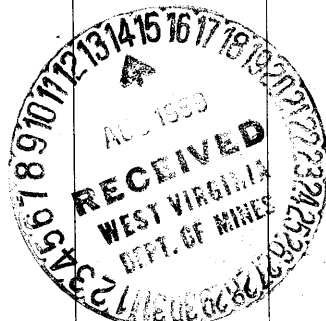
COAL WAS ENCOUNTERED AT \_\_\_\_\_ FEET \_\_\_\_\_ INCHES  
 \_\_\_\_\_ FEET \_\_\_\_\_ INCHES FEET \_\_\_\_\_ INCHES  
 \_\_\_\_\_ FEET \_\_\_\_\_ INCHES FEET \_\_\_\_\_ INCHES

RESULT AFTER TREATMENT \_\_\_\_\_

ROCK PRESSURE AFTER TREATMENT \_\_\_\_\_

Fresh Water \_\_\_\_\_ Feet Salt Water \_\_\_\_\_ Feet

Formation	Color	Hard or Soft	Top	Bottom	Oil, Gas or Water	Depth	Remarks
Dunkard Sand			330	330			
Gas Sand			440	485			
Salt Sand			585	665			
Big Lime			1145	1198			
Injun Sand			1198	1335			
Gantz Sand			1544	1556			
Fifty Foot Sand			1605	1640			
Total Depth				1657			



NOV 5 1959