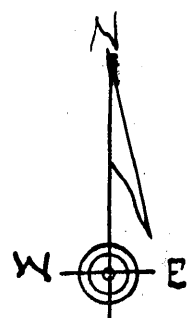
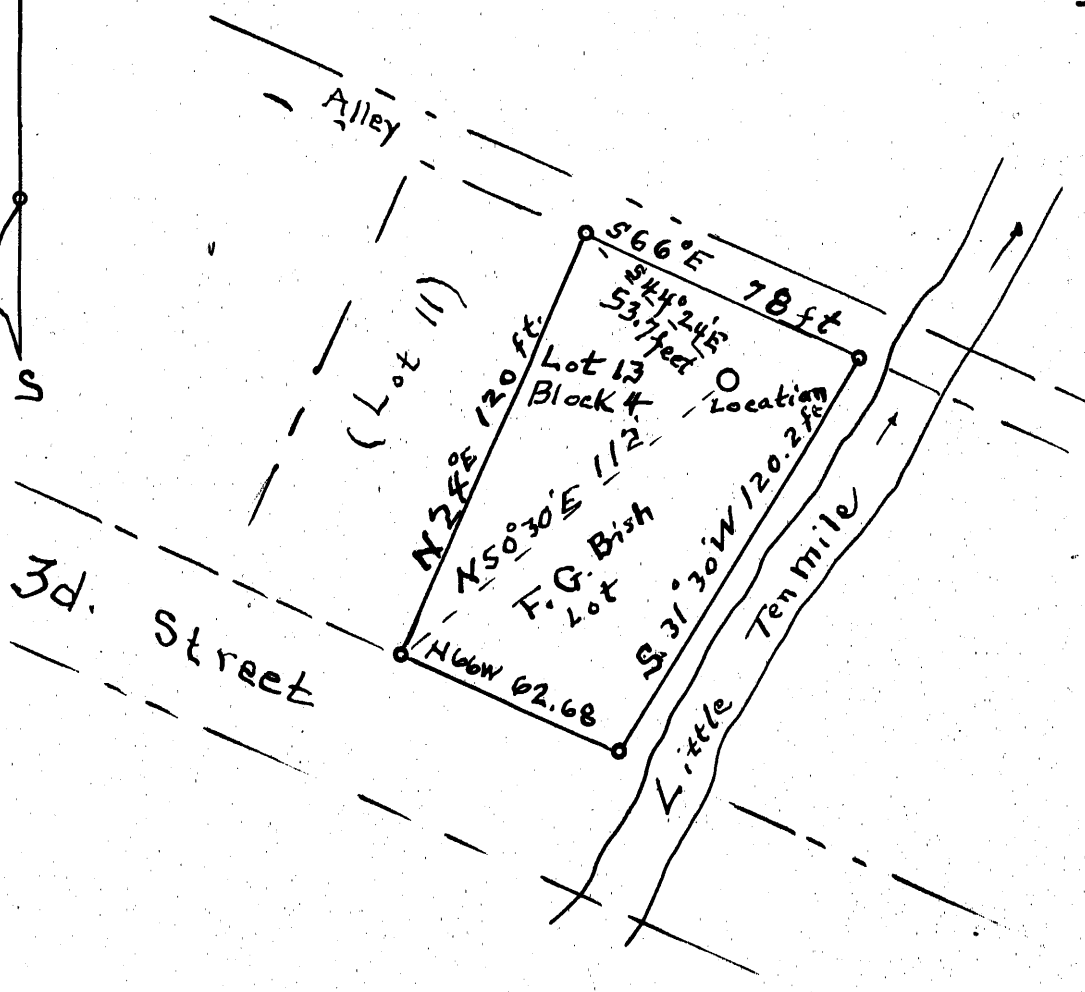


Lot 13, Block 4 - Fairmont  
Building + Investment Co.,  
Lumberport, W. Va.



1  
2  
3



3,275  
0.80W

- New Location...
- Drill Deeper.....
- Abandonment.....

Company F. G. Bish

Address Clarksburg, W. Va.

Farm F. G. Bish Lot

Tract 1 Acres 2/10 Lease No. \_\_\_\_\_

Well (Farm) No. 1 Serial No. \_\_\_\_\_

Elevation (Spirit Level) 916

Quadrangle Clarksburg

County Harrison District Eagle

Engineer M. F. B. Pinger

Engineer's Registration No. 261

File No. \_\_\_\_\_ Drawing No. \_\_\_\_\_

Date 11-24-1952 Scale 1" = 50'

STATE OF WEST VIRGINIA  
DEPARTMENT OF MINES  
OIL AND GAS DIVISION,  
CHARLESTON

WELL LOCATION MAP  
FILE NO. HAR-1598-A

+ Denotes location of well on United States Topographic Maps, scale 1 to 62,500, latitude and longitude lines being represented by border lines as shown.

- Denotes one inch spaces on border line of original tracing.



STATE OF WEST VIRGINIA  
DEPARTMENT OF MINES  
OIL AND GAS DIVISION

1470

WELL RECORD

Permit No. 1498-A

Oil or Gas Well Oil & Gas  
(KIND)

Company F.G. Bish  
Address Box 428 Clarksburg W Va  
Farm Lot #13 Fairmont Investment Co  
Location (waters) Addition To Lumberport  
Well No. One Elev. 915  
District Eagle County Harrison  
The surface of tract is owned in fee by In Fee by  
F.G. Bish Address \_\_\_\_\_  
Mineral rights are owned by \_\_\_\_\_  
Address \_\_\_\_\_

Casing and Tubing	Used in Drilling	Left in Well	Packers
Size			
16			Kind of Packer
13			
10	<b>140</b>	<b>140</b>	Size of
8 1/4			
6 5/8	<b>1300</b>	<b>1300</b>	Depth set
5 3/16			
3			Perf. top
2			Perf. bottom
Liners Used			Perf. top
			Perf. bottom

Drilling commenced \_\_\_\_\_  
Drilling completed NO RECORD AVAILABLE  
Date Shot \_\_\_\_\_ From \_\_\_\_\_ To \_\_\_\_\_  
With \_\_\_\_\_  
Open Flow \_\_\_\_\_ /10ths Water in \_\_\_\_\_ Inch  
\_\_\_\_\_ /10ths Merc. in \_\_\_\_\_ Inch  
Volume \_\_\_\_\_ Cu. Ft.  
Rock Pressure \_\_\_\_\_ lbs. \_\_\_\_\_ hrs.  
Oil \_\_\_\_\_ bbls., 1st 24 hrs.  
Fresh water \_\_\_\_\_ feet \_\_\_\_\_ feet  
Salt water \_\_\_\_\_ feet \_\_\_\_\_ feet

CASING CEMENTED \_\_\_\_\_ SIZE \_\_\_\_\_ No. Ft. \_\_\_\_\_ Date \_\_\_\_\_  
Below Coal  
COAL WAS ENCOUNTERED AT \_\_\_\_\_ FEET \_\_\_\_\_ INCHES  
\_\_\_\_\_ FEET \_\_\_\_\_ INCHES \_\_\_\_\_ FEET \_\_\_\_\_ INCHES  
\_\_\_\_\_ FEET \_\_\_\_\_ INCHES \_\_\_\_\_ FEET \_\_\_\_\_ INCHES

Formation	Color	Hard or Soft	Top	Bottom	Oil, Gas or Water	Depth Found	Remarks
<b>Note;</b>							
This well drilled about 1913 by parties unknown.							
Produced gas from 5th sand and Oil from Gordon sand until about 1920. Was plugged up to top of Big Injun sand and 6 5/8 and 10" casing left in							
I acquired this well with some other wells and decided to repair the casing and clean out to produce Oil from Gordon sand.							
Pulled out 960 feet of 6 5/8 to repair leaks but decided to abandon the well. Hole now open to below Salt sand.							
Record of well at same elevation and near is given below.							
Elevation <u>1920</u>							
140 feet below Pittsburgh Coal.							
Dunkard			450	515			
Salt Sand			650	740			
Salt Sand			800	885			
Big Injun			1300.				



Formation	Color	Hard or Soft	Top	Bottom	Oil, Gas or Water	Depth Found	Remarks
							E

Date July 28 1953, 19

APPROVED [Signature], Owner

By \_\_\_\_\_ (Title)