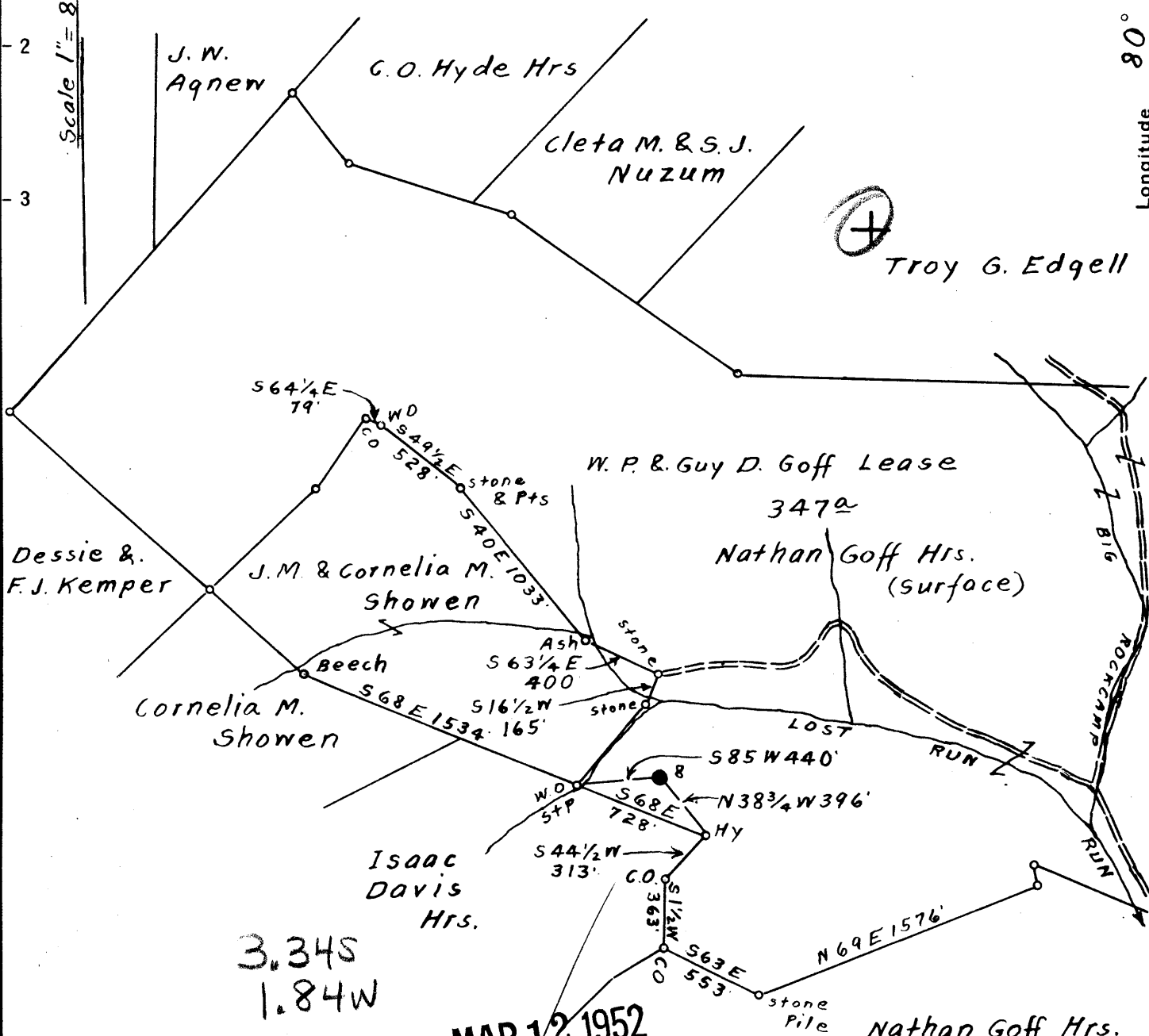


Scale 1" = 800 feet



New Location
 Drill Deeper
 Abandonment

On 800' Map N 39, Sqs. S 6 E 5.

Company A.M. Snider
 Address Waynesburg, Pa.
 Farm W.P. & Guy D. Goff
 Tract _____ Acres 347 Lease No. _____
 Well (Farm) No. 8 Serial No. _____
 Elevation (Spirit Level) Floor - 1206.61
Ground - 1204.31
 Quadrangle Centerpoint
 County Harrison District Sardis
 Engineer Eleworth Haines
 Engineer's Registration No. 2221
 File No. _____ Drawing No. _____
 Date Aug. 9th, 1951 Scale 1" = 800 Feet

STATE OF WEST VIRGINIA
 DEPARTMENT OF MINES
 OIL AND GAS DIVISION
 CHARLESTON

WELL LOCATION MAP
 FILE NO. HAR-1484-A

+ Denotes location of well on United States Topographic Maps, scale 1 to 62,500, latitude and longitude lines being represented by border lines as shown.
 - Denotes one inch spaces on border line of original tracing.

W. P. AND GUY D. GOFF NO. 8 WELL.

Sardis District, Harrison County, W. Va.

By A. M. Snider, Waynesburg, Pa.

Abandoned under permit Har-1484-A.

On 347 acres, on Rockcamp Run.

Elevation, 1206.61' (D. F.); 1204.31' L. (ground).

Drilling commenced May 1922; completed July, 15, 1922.

Shot July 25, 1922, at 3093 $\frac{1}{2}$ '-3099 $\frac{1}{2}$ ', with 20 qts., 4 $\frac{1}{4}$ "x7' shell.

13" casing, 62 $\frac{1}{2}$ '; 10", 469' (pulled); 8 $\frac{1}{4}$ ", 1419' (pulled); 6 $\frac{5}{8}$ ", 2267';
5 $\frac{3}{8}$ ", 2983'.

Oil well. Record to Dept. of Mines stamped Sept. 17, 1951.

Record to RCT from Dept. of Mines (Lineberg) Mar. 12, 1952. O.F.No.1330.

	Top.	Bottom.
Native coal	443	447
Bluff Sand	602	642
Pittsburgh Coal	991	993
Hard sand	1175	1215
Sand	1330	1380
Sand	1387	1398
Little Dunkard Sand	1412	1476
Black shale	1476	1484
Hard rock	1550	1580
Gas Sand	1592	1650
1st Salt Sand	1742	1785
2nd Salt Sand (water, 1920', 1 bailer per hour)	1884	1960
3rd Salt Sand	2050	2153
Maxton Sand	2170	2205
Little Lime	2217	2225
Pencil Cave	2225	2245
Big Lime	2245	2296
Big Injun Sand (water, 2333', $\frac{1}{2}$ bailer per hour)	2296	2411
Squaw Sand	2430	2500
Sand	2525	2630
Berea Grit	2735	2778
Gantz Sand	2814	2835
Sand and lime	2845	2852
Fifty-foot Sand	2872	2891
Thirty-foot Sand (gas, 2882', 12/10 W. through 2") 146 Mcf	2972	2994
Stray Boulder Sand	3016	3048
Gordon Stray Sand (small show of oil at 3061')	3050	3068
Gordon Sand (oil pay, 3092-3096') (good look- ing sand, 3097-3099')	3085	3101
Fourth Sand shell	3106	3114
Total depth		3115