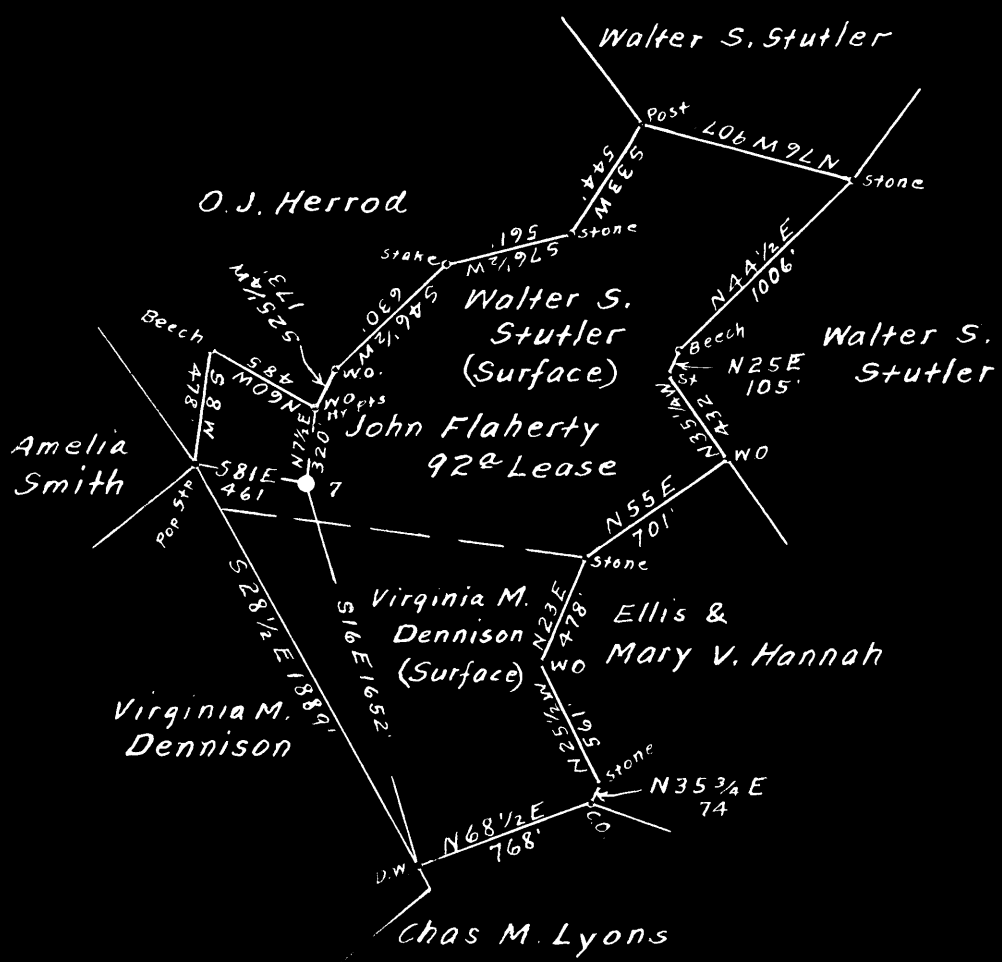


Scale 1" = 800 Feet



077 S  
218 W

Surface owned by Walter S. Stutler.  
 Address: Mrs. Martha Stutler, 109, Edison St. Nutter Fort, W. Va.  
 Coal owned by W. L. Pursglove Coal Co., 416, W. Main St. Clarksburg, W. Va.

- New Location
- Drill Deeper
- Abandonment

On 400' Map Sheet No. 3554. Sqs. S 9 E 9.

Company Wm Moses  
 Address Salem, W. Va.  
 Farm John Flaherty  
 Tract \_\_\_\_\_ Acres 92 Lease No. 52  
 Well (Farm) No. 7 Serial No. \_\_\_\_\_  
 Elevation (Spirit Level) Floor - 1483.35  
Ground - 1481.85  
 Quadrangle Clarksburg  
 County Harrison District Tenmile  
 Engineer Edwin H. Huey  
 Engineer's Registration No. 2011  
 File No. \_\_\_\_\_ Drawing No. \_\_\_\_\_  
 Date Feb. 9th, 1949. Scale 1" = 800 Feet.

STATE OF WEST VIRGINIA  
 DEPARTMENT OF MINES  
 OIL AND GAS DIVISION  
 CHARLESTON

**WELL LOCATION MAP**  
 FILE NO. HAR-1322-A

+ Denotes location of well on United States Topographic Maps, scale 1 to 62,500, latitude and longitude lines being represented by border lines as shown.

- Denotes one inch spaces on border line of original tracing.



STATE OF WEST VIRGINIA  
DEPARTMENT OF MINES  
OIL AND GAS DIVISION

1121

Permit No. 1322-A

WELL RECORD

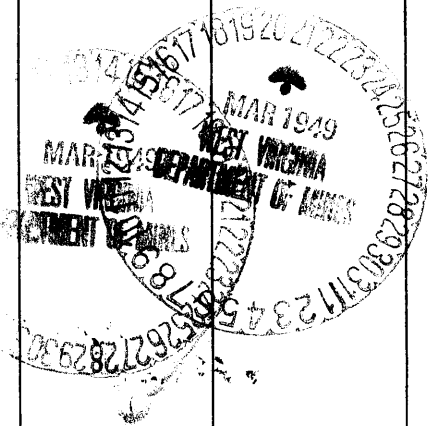
Oil or Gas Well Oil  
(KIND)

Company William Moses  
Address Salem, W. Va.  
Farm John Flaherty Acres 92  
Location (waters) \_\_\_\_\_  
Well No. Seven Elev. 1481.85  
District Tenmile County Harrison  
The surface of tract is owned in fee by South Penn Natural Gas Co.  
Address \_\_\_\_\_  
Mineral rights are owned by W. L. Pursglove Coal Co.  
Address \_\_\_\_\_  
Drilling commenced ?  
Drilling completed 12/18/01  
Date Shot \_\_\_\_\_ From \_\_\_\_\_ To \_\_\_\_\_  
With \_\_\_\_\_  
Open Flow \_\_\_\_\_ /10ths Water in \_\_\_\_\_ Inch  
\_\_\_\_\_ /10ths Merc. in \_\_\_\_\_ Inch  
Volume \_\_\_\_\_ Cu. Ft.  
Rock Pressure \_\_\_\_\_ lbs. \_\_\_\_\_ hrs.  
Oil \_\_\_\_\_ bbls., 1st 24 hrs.  
Fresh water \_\_\_\_\_ feet \_\_\_\_\_ feet  
Salt water \_\_\_\_\_ feet \_\_\_\_\_ feet

Casing and Tubing	Used in Drilling	Left in Well	Packers
Size			Kind of Packer
16			Size of
13			Depth set
8 1/4		2182	Perf. top
6 5/8			Perf. bottom
5 3/16			Perf. top
3			Perf. bottom
2			
Liners Used			

CASING CEMENTED \_\_\_\_\_ SIZE \_\_\_\_\_ No. Ft. \_\_\_\_\_ Date \_\_\_\_\_  
COAL WAS ENCOUNTERED AT 665 FEET \_\_\_\_\_ INCHES  
\_\_\_\_\_ FEET \_\_\_\_\_ INCHES FEET \_\_\_\_\_ INCHES  
\_\_\_\_\_ FEET \_\_\_\_\_ INCHES FEET \_\_\_\_\_ INCHES

Formation	Color	Hard or Soft	Top	Bottom	Oil, Gas or Water	Depth Found	Remarks
Pitts Coal			665	670			
Dunkard Sand			1155	1220			
Salt Sand			1530	1625			
Big Lime			1960	2040			
Big Injun			2040	2125			
Fifty Feet			2520	2570			
Golden Sand			2820	2860			
Fifth Sand			3045	3052			
Total Depth			3068				



JOHN FLAHERTY NO. 7 WELL.

1322A

Tennile District, Harrison County, W. Va.

By William Moses, Salem, W. Va.

Abandoned under permit Har-----At

On 92 acres.

Elevation, 1481.95' L.

Surface owned by South Penn Natural Gas Co., and minerals by W. L. Purglove Coal Co.

Drilling completed Dec. 18, 1901.

6 $\frac{1}{2}$ " casing, 2182'.

Coal was encountered at 665-670'.

Oil well. Record to Dept. of Mines stamped March 21, 1949.

Record to RCT from Mrs. Griffith May 21, 1949. Old File No. 1121.

	Top.	Bottom.
Pittsburgh Coal	665	- 670
Dunkard Sand	1155	- 1220
Salt Sand	1530	- 1625
Big Lime	1960	- 2040
Big Injun Sand	2040	- 2125
Fifty-foot Sand	2520	- 2570
Garden Sand	2820	- 2860
Fifth Sand	3045	- 3052
Total depth		3068