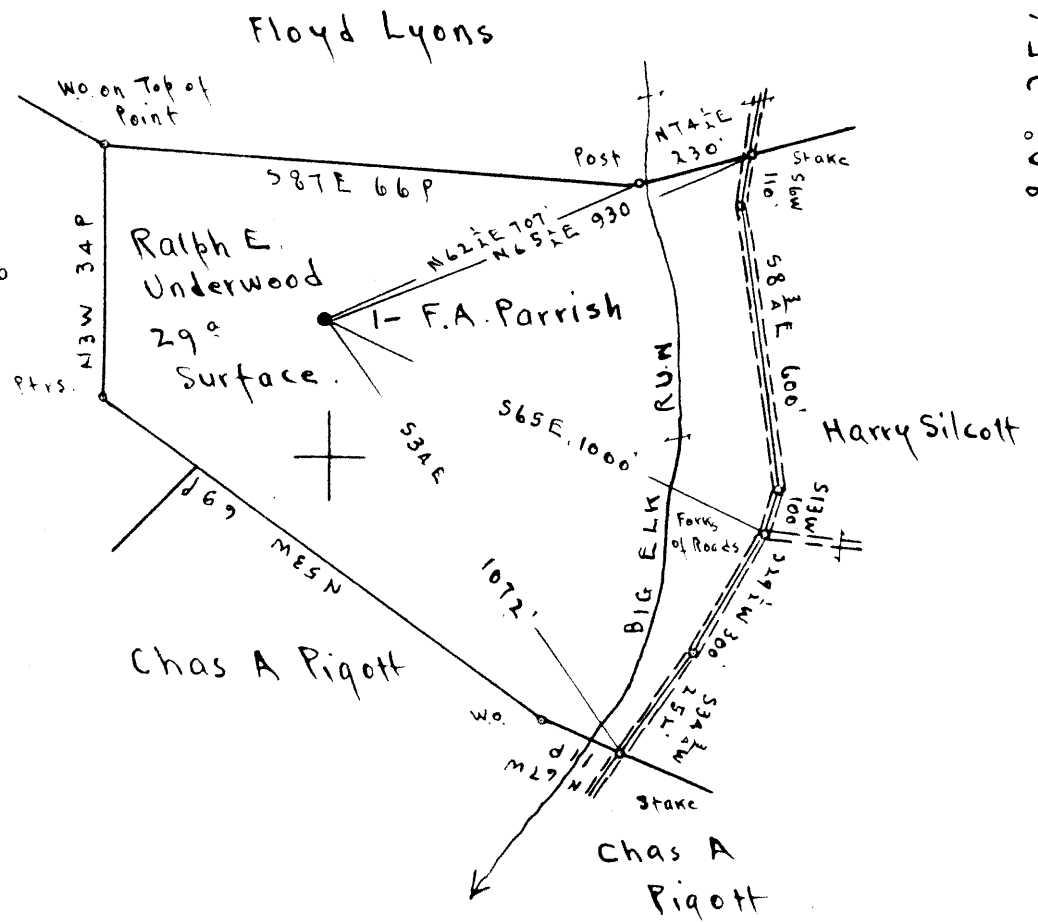


Scale 1" = 400 Feet



3.75 S  
3.79 W

Surface: Ralph E. Underwood, R.F.D. #3, Wallace, Harrison Co., W.Va.  
 Pittsburgh Coal: Willis G. Tetrick, Jr., et al.  
 Address Willis G. Tetrick, Jr., 311 Clay St. Clarksburg, W.Va.

New Location...  
 Drill Deeper...  
 Abandonment...  On 400' map sheet # 305A

SI E 8

Company Otis Eastern Service, Inc.  
 Address Bolivar, N.Y.  
 Farm F.A. Parrish  
 Tract \_\_\_\_\_ Acres 29 Lease No. \_\_\_\_\_  
 Well (Farm) No. 1 Serial No. \_\_\_\_\_  
 Elevation (Spirit Level) Floor - 1260.23  
Ground - 1257.73  
 Quadrangle CLARKSBURG  
 County Harrison District Sardis  
 Engineer Ernest C. Tabler  
 Engineer's Registration No. 2005  
 File No. \_\_\_\_\_ Drawing No. \_\_\_\_\_  
 Date Oct. 8<sup>th</sup> 1948 Scale 1" = 400 Feet

STATE OF WEST VIRGINIA  
 DEPARTMENT OF MINES  
 OIL AND GAS DIVISION  
 CHARLESTON

WELL LOCATION MAP  
 FILE NO. HAR-1272-A

+ Denotes location of well on United States Topographic Maps, scale 1 to 62,500, latitude and longitude lines being represented by border lines as shown.

- Denotes one inch spaces on border line of original tracing.



STATE OF WEST VIRGINIA  
DEPARTMENT OF MINES  
OIL AND GAS DIVISION

1060

WELL RECORD

Permit No. 127-A

Oil or Gas Well Oil  
(KIND)

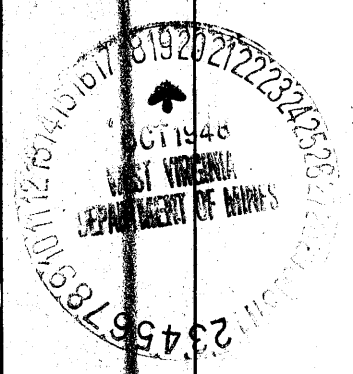
Company Otis Eastern Service, Inc.  
Address Box 929, Charleston, W. Va.  
Farm F. A. Parrish Acres 29  
Location (waters) Big Elk Run  
Well No. 1 Elev. 1257  
District Sardis County Harrison  
The surface of tract is owned in fee by \_\_\_\_\_  
Address \_\_\_\_\_  
Mineral rights are owned by \_\_\_\_\_  
Address \_\_\_\_\_

Drilling commenced \_\_\_\_\_  
Drilling completed April 20, 1904  
Date Shot \_\_\_\_\_ From \_\_\_\_\_ To \_\_\_\_\_  
With \_\_\_\_\_  
Open Flow /10ths Water in \_\_\_\_\_ Inch  
/10ths Merc. in \_\_\_\_\_ Inch  
Volume \_\_\_\_\_ Cu. Ft.  
Rock Pressure \_\_\_\_\_ lbs. \_\_\_\_\_ hrs.  
Oil 107 bbls., 1st 24 hrs.  
Fresh water \_\_\_\_\_ feet  
Salt water \_\_\_\_\_ feet

Casing and Tubing	Used in Drilling	Left in Well	Packers
Size			Kind of Packer
16			<u>Hook Wall</u>
18			Size of <u>5-3/16"</u>
10	<u>225'</u>	<u>Pulled</u>	(Not Visible)
8 3/4	<u>1375'</u>	<u>1375'</u>	Depth set <u>2401'</u>
6 5/8	<u>2445'</u>	<u>2445'</u>	<u>1-27-26</u>
5 3/16	<u>2401'</u>	<u>2401'</u>	Perf. top _____
3			Perf. bottom _____
2" UE	<u>3157'</u>	<u>3157'</u>	Perf. top _____
Liners Used	<u>479' - 5"x5 1/2"</u>		Perf. bottom _____

CASING CEMENTED \_\_\_\_\_ SIZE \_\_\_\_\_ No. Ft. \_\_\_\_\_ Date \_\_\_\_\_  
COAL WAS ENCOUNTERED AT 1054 FEET 72 INCHES  
\_\_\_\_\_ FEET \_\_\_\_\_ INCHES FEET \_\_\_\_\_ INCHES  
\_\_\_\_\_ FEET \_\_\_\_\_ INCHES FEET \_\_\_\_\_ INCHES

Formation	Color	Hard or Soft	Top	Bottom	Oil, Gas or Water	Depth Found	Remarks
Conductor				<u>16</u>			
Pittsburgh, Coal			<u>1054'</u>	<u>1060</u>			
Big Line			<u>2235</u>	<u>2315</u>			
Pencil Cave			<u>2225</u>	<u>2235</u>			
Big Injun			<u>2315</u>	<u>2450</u>			
Stray Sand			<u>3065</u>	<u>3109</u>			
Gordon Sand			<u>3128</u>				
1st. Pay			<u>3145</u>				
Gas			<u>2888</u>				
Gas			<u>3107</u>				
TOTAL DEPTH ---				<u>3157</u>			
<u>Terreco Record</u>							
	<u>Date</u>	<u>Size</u>	<u>Shell</u>	<u>Top</u>	<u>Bottom</u>		
	<u>3-5-05</u>	<u>20</u>	<u>4"x20'</u>	<u>3106</u>			
	<u>7-25-11</u>	<u>30</u>	<u>5"x30'</u>	<u>3145</u>			
<u>Remarks</u>							
<p>Aug. 18, 1911: Put in 226' 5x5 1/2 F.J. Liner, packer on top set at 2898'. Put in 250', 5x5 1/2 F.J. Liner, packer on top set at 2446'. Cave packer set at 2902'. 2nd. section 12 lbs. 246' 5x5 1/2 F.J. liner hung on cave packer set at 2440'.</p> <p>Jan. 27, 1926: Run 110-lbs. 5-3/16" casing 2401' on Hook Wall Packer set at 2401', inside diam. 5-1/8".</p>							



Sardin District, Harrison County, W. Va.  
 By Otis Eastern Service, Inc., Box 929, Charleston, W. Va.  
 Abandoned under permit Har-.....-A1  
 On 29 acres, on Big Elk Run.  
 Elevation, 1257' L.

Drilling completed April 20, 1904.

Oil, 107 bbls., 1st 24 hrs.

10" casing, 225' (pulled); 8 $\frac{1}{2}$ " 1375' (not visible); 6 $\frac{1}{2}$ " 2445';  
 5 $\frac{1}{2}$ " 2401'; 2" U.S. tubing, 3157'; 5x5 $\frac{1}{2}$ " liner, 479'.

Coal was encountered at 1054-1060'.

Shot March 3, 1905, with 20 qts., 4"x20' shell, top, 3106'; July 25,  
 1911, with 30 qts., 5"x30' shell, top, 3145'.

REMARKS; Aug. 18, 1911, put in 226' 5x5 $\frac{1}{2}$ " P. J. liner, packer on top  
 set at 2898'. Put in 250' 5x5 $\frac{1}{2}$ " P. J. liner, packer on top, set  
 at 2446'. Cave packer set at 2902'. 2nd section, 12 jts., 246',  
 5x5 $\frac{1}{2}$ " P. J. liner hung on cave packer set at 2840'.

Jan. 27, 1926. Run 110 jts. 5" casing, 2401', on hook wall packer  
 set at 2401'; inside diam., 5-1/8".

Oil well. Record to Dept. of Mines stamped Oct. 19, 1948.

Record to RCT from Mrs. Griffith Jan. 5, 1949. Old File No. 1060.

	Top.	Bottom.
Conductor	0	16
Pittsburgh Coal	1054	1060
Big Lime	2235	2315
Pencil Cave // // //	2225	2235
Big Injun Sand	2315	2450
Stray Sand (gas, 3107', 2888')	3065	3109
Gordon Sand (1st pay, 3145)';	3128	....
Total depth		3157