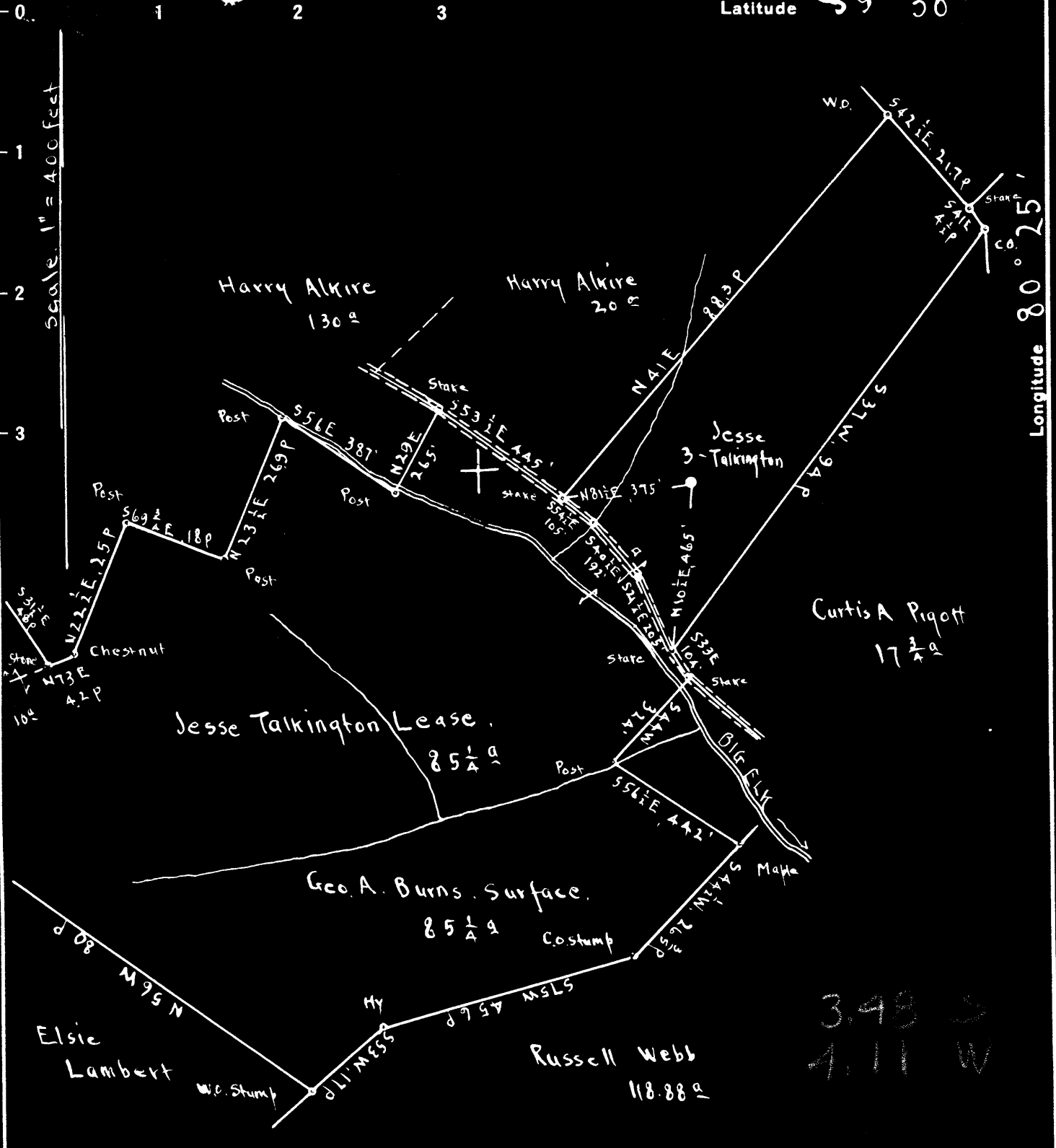


Latitude 39° 30'

Longitude 80° 25'



3.48 S  
4.11 W

Surface: Geo. A. Burns; R.F.D #3, Wallace, Harrison Co., W.Va.  
 Coal: Willis G. Tetrich, Jr., et al; 311 Clay St, Clarksburg, W.Va.

New Location   
 Drill Deeper   
 Abandonment  On 400' map # 3053

SI E7

Company Strauss and Beren  
 Address Marietta Ohio  
 Farm Jesse Talkington  
 Tract Acres 85 1/4 Lease No.           
 Well (Farm) No. 3 Serial No.           
 Elevation (Spirit Level) Floor 1253.31  
Ground 1250.91  
 Quadrangle CLARKSBURG  
 County Harrison District Sardis  
 Engineer E.C. Tabler  
 Engineer's Registration No.           
 File No.          Drawing No.           
 Date July 21<sup>st</sup> 1947 Scale 1" = 400 feet

STATE OF WEST VIRGINIA  
 DEPARTMENT OF MINES  
 OIL AND GAS DIVISION  
 CHARLESTON

WELL LOCATION MAP  
 FILE NO. HAR-1240-A

+ Denotes location of well on United States Topographic Maps, scale 1 to 62,500, latitude and longitude lines being represented by border lines as shown.  
 - Denotes one inch spaces on border line of original tracing.



STATE OF WEST VIRGINIA  
DEPARTMENT OF MINES  
OIL AND GAS DIVISION

1236

WELL RECORD

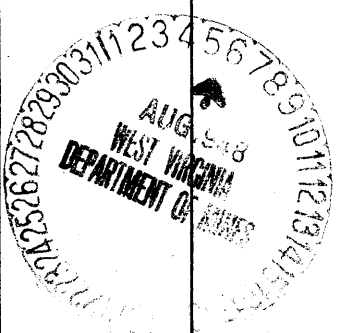
Permit No. 1240-A Oil or Gas Well Oil (KIND)

Company Strauss & Beren  
 Address Marietta, Ohio  
 Farm Jesse Talkington Acres 85 1/2  
 Location (waters) Big Elk  
 Well No. 3 Elev. 1253.31  
 District Sardis County Harrison  
 The surface of tract is owned in fee by George A. Burns  
 Address Wallace, W. Va.  
 Mineral rights are owned by Willis G. Tetrick Jr.  
 Address 311 Clay Street  
Clarksburg, W. Va.  
 Drilling commenced \_\_\_\_\_  
 Drilling completed \_\_\_\_\_  
 Date Shot \_\_\_\_\_ From \_\_\_\_\_ To \_\_\_\_\_  
 With \_\_\_\_\_  
 Open Flow \_\_\_\_\_ /10ths Water in \_\_\_\_\_ Inch  
 \_\_\_\_\_ /10ths Merc. in \_\_\_\_\_ Inch  
 Volume \_\_\_\_\_ Cu. Ft.  
 Rock Pressure \_\_\_\_\_ lbs. \_\_\_\_\_ hrs.  
 Oil \_\_\_\_\_ bbls., 1st 24 hrs.  
 Fresh water \_\_\_\_\_ feet \_\_\_\_\_ feet  
 Salt water \_\_\_\_\_ feet \_\_\_\_\_ feet

Casing and Tubing	Used in Drilling	Left in Well	Packers
Size			
16			Kind of Packer
13			
10	297'	297'	Size of
8 1/4	1505'	1505'	
6	2437'	2437'	Depth set
5 3/16			
3			Perf. top
2			Perf. bottom
Liners Used	445' - 5x5 1/2"		Perf. top
	top at 2450'		Perf. bottom

CASING CEMENTED \_\_\_\_\_ SIZE \_\_\_\_\_ No. Ft. \_\_\_\_\_ Date \_\_\_\_\_  
 COAL WAS ENCOUNTERED AT 974 FEET \_\_\_\_\_ INCHES  
 \_\_\_\_\_ FEET \_\_\_\_\_ INCHES FEET \_\_\_\_\_ INCHES  
 \_\_\_\_\_ FEET \_\_\_\_\_ INCHES FEET \_\_\_\_\_ INCHES

Formation	Color	Hard or Soft	Top	Bottom	Oil, Gas or Water	Depth Found	Remarks
Pitts. Coal			974	979			
Big Lime			2200	2260			
Big Injun			2260	2360			
Fifty Foot			2820	2860			
Thirty Foot			2930	2960			
Boulder & Stray			2960	3024			
Gordon			3039	3069			
TOTAL DEPTH				3099			



JAMES TALKINGTON NO. 3 WELL.

1240A

Hardin District, Harrison County, W. Va.

By Strauss & Beron, Marietta, Ohio.

Abandoned under permit Har-----A7

On 85 acres, on Elk Creek.

Elevation, 1253.31' L.

Surface owned by George A. Burns, R. F. D. No. 3, Wallace, W. Va.,

and minerals by Willis G. Tetrick, Jr., 311 Clay St.,

Clarksburg, W. Va.

10" casing, 297'; 8" casing, 1505'; 6" casing, 2437'; 5x5" liner, 445', top  
at 2450'.

Coal was encountered at 974-979'.

Oil well. Record to Dept. of Mines stamped Aug. 6, 1948.

Record to HCP from Mrs. Griffith Sept. 23, 1948. Old File No. 1036.

	Top.	Bottom.
Pittsburgh Coal	974	- 979
Big Line	2200	- 2260
Big Injun Sand	2260	- 2360
Fifty-foot Sand	2820	- 2860
Thirty-foot Sand	2930	- 2960
Boulder and Stray Sands	2960	- 3024
Garden Sand	3039	- 3069
Total depth		3099