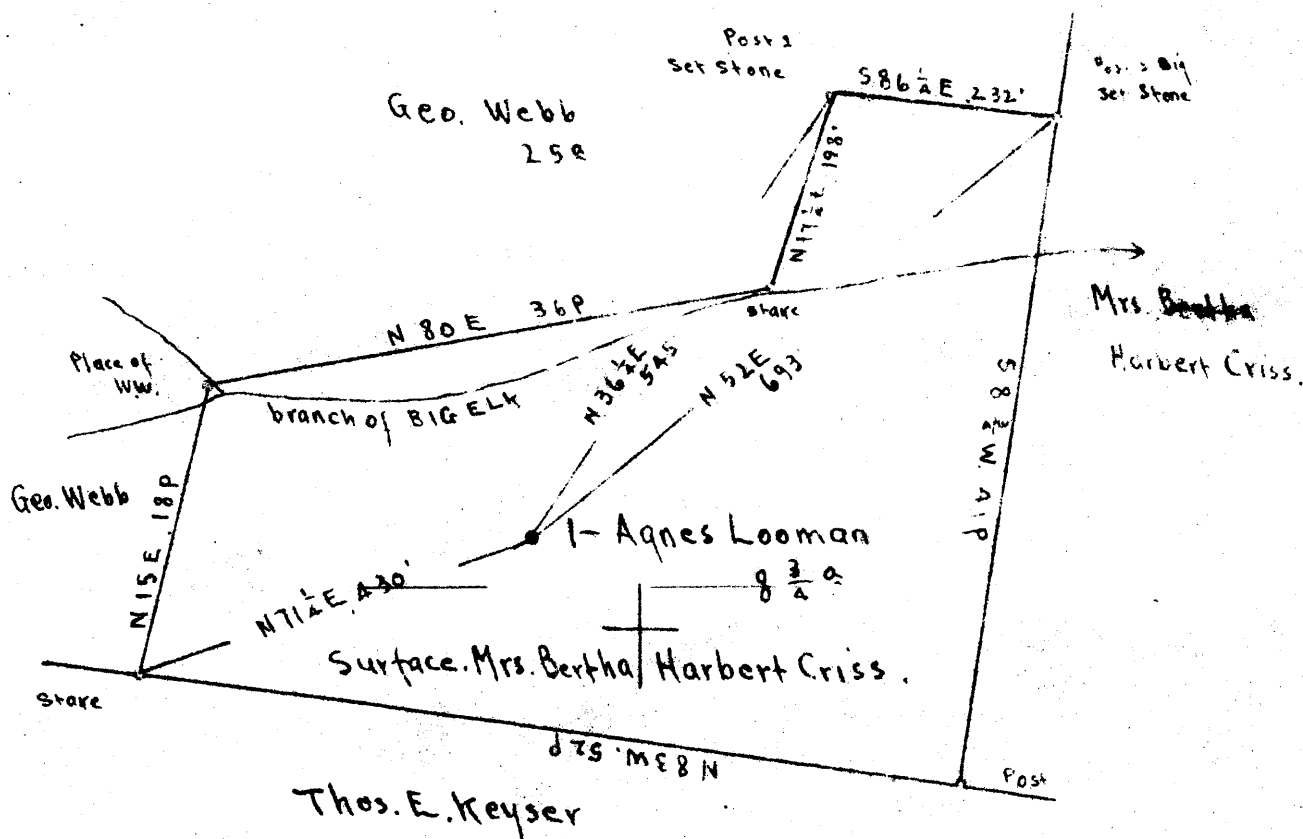


Scale. 1" = 200 Feet



Surface: Mrs. Bertha Harbert Criss, R.F.D #3, Wallace, Harrison Co., W.Va.  
 Coal: Willis G. Tetrick, Jr., 311 Clay St., Clarksburg, W.Va.

5.725  
 3.60W

- New Location...
- Drill Deeper...
- Abandonment...

On A00' map # 3154.

S3. E 7-8

Company Strauss and Beren  
 Address Marietta, Ohio.  
 Farm Agnes Looman  
 Tract Acres 8 3/4 Lease No. \_\_\_\_\_  
 Well (Farm) No. 1 Serial No. \_\_\_\_\_  
 Elevation (Spirit Level) Floor - 1171.33  
Ground - 1164.73  
 Quadrangle Clarksburg  
 County Harrison District Sardis  
 Engineer E. C. Tabler  
 Engineer's Registration No. \_\_\_\_\_  
 File No. \_\_\_\_\_ Drawing No. \_\_\_\_\_  
 Date April 9th 1948 Scale 1" = 200 Feet

STATE OF WEST VIRGINIA  
 DEPARTMENT OF MINES  
 OIL AND GAS DIVISION  
 CHARLESTON

WELL LOCATION MAP  
 FILE NO. HAR-1186-A

+ Denotes location of well on United States Topographic Maps, scale 1 to 62,500, latitude and longitude lines being represented by border lines as shown.

- Denotes one inch spaces on border line of original tracing.



STATE OF WEST VIRGINIA  
DEPARTMENT OF MINES  
OIL AND GAS DIVISION

911

WELL RECORD

Permit No. \_\_\_\_\_

Oil or Gas Well \_\_\_\_\_  
(KIND)

Company **Strauss & Beran**  
Address **Marietta, Ohio**  
Farm **Agnes Looman** Acres **8 3/4**  
Location (waters) **Big Elk**  
Well No. **1** Elev. **1171.33**  
District **Sardin** County **Harrison**  
The surface of tract is owned in fee by **Mrs. Bertha Harbert Criss** Address **RFD # 3, Wallage, W. Va.**  
Mineral rights are owned by **Willis G. Tetrick, Jr.** Address **311 Clay Street, Clarksburg, W. Va.**  
Drilling commenced \_\_\_\_\_  
Drilling completed \_\_\_\_\_  
Date Shot \_\_\_\_\_ From \_\_\_\_\_ To \_\_\_\_\_  
With \_\_\_\_\_  
Open Flow \_\_\_\_\_ /10ths Water in \_\_\_\_\_ Inch  
\_\_\_\_\_ /10ths Merc. in \_\_\_\_\_ Inch  
Volume \_\_\_\_\_ Cu. Ft.  
Rock Pressure \_\_\_\_\_ lbs. \_\_\_\_\_ hrs.  
Oil \_\_\_\_\_ bbls., 1st 24 hrs.  
Fresh water \_\_\_\_\_ feet \_\_\_\_\_ feet  
Salt water \_\_\_\_\_ feet \_\_\_\_\_ feet

Casing and Tubing	Used in Drilling	Left in Well	Packers
Size			
16			Kind of Packer
13			
10	<b>140'</b>	<b>None</b>	Size of
8 1/4	<b>1342</b>	<b>1342</b>	
6%	<b>2265</b>	<b>2265</b>	Depth set
5 3/16	<b>2703</b>	<b>2703</b>	
2			Perf. top
			Perf. bottom
Liners Used			Perf. top
			Perf. bottom

CASING CEMENTED \_\_\_\_\_ SIZE \_\_\_\_\_ No. Ft. \_\_\_\_\_ Date \_\_\_\_\_  
COAL WAS ENCOUNTERED AT **846** FEET \_\_\_\_\_ INCHES  
\_\_\_\_\_ FEET \_\_\_\_\_ INCHES FEET \_\_\_\_\_ INCHES  
\_\_\_\_\_ FEET \_\_\_\_\_ INCHES FEET \_\_\_\_\_ INCHES

Formation	Color	Hard or Soft	Top	Bottom	Oil, Gas or Water	Depth Found	Remarks
Pgh. Coal			846	850			
Dunkard Sand			1342	1400			
Salt Sand			1770	1820			
Little Lime			1900	1960			
Big Lime			2080	2140			
Pencil Cave			2070	2080			
Big Injun			2140	2265			
50' Sand			2700	2755			
Boulder			2830	2845			
Stray Sand			2860	2918			
Gordon Sand			2930	2975			
Total Depth				2996			

