

LATITUDE 39° 12' 30"



0.67N  
0.55W

LONGITUDE 80° 52' 00"

7.5 OGIS topo location

7.5' loc \_\_\_\_\_ 15' loc \_\_\_\_\_  
(calc.) \_\_\_\_\_

Company H. V. Co (8145)

Farm J. W. Williams

Quad West Milford 7 1/2

County Harrison

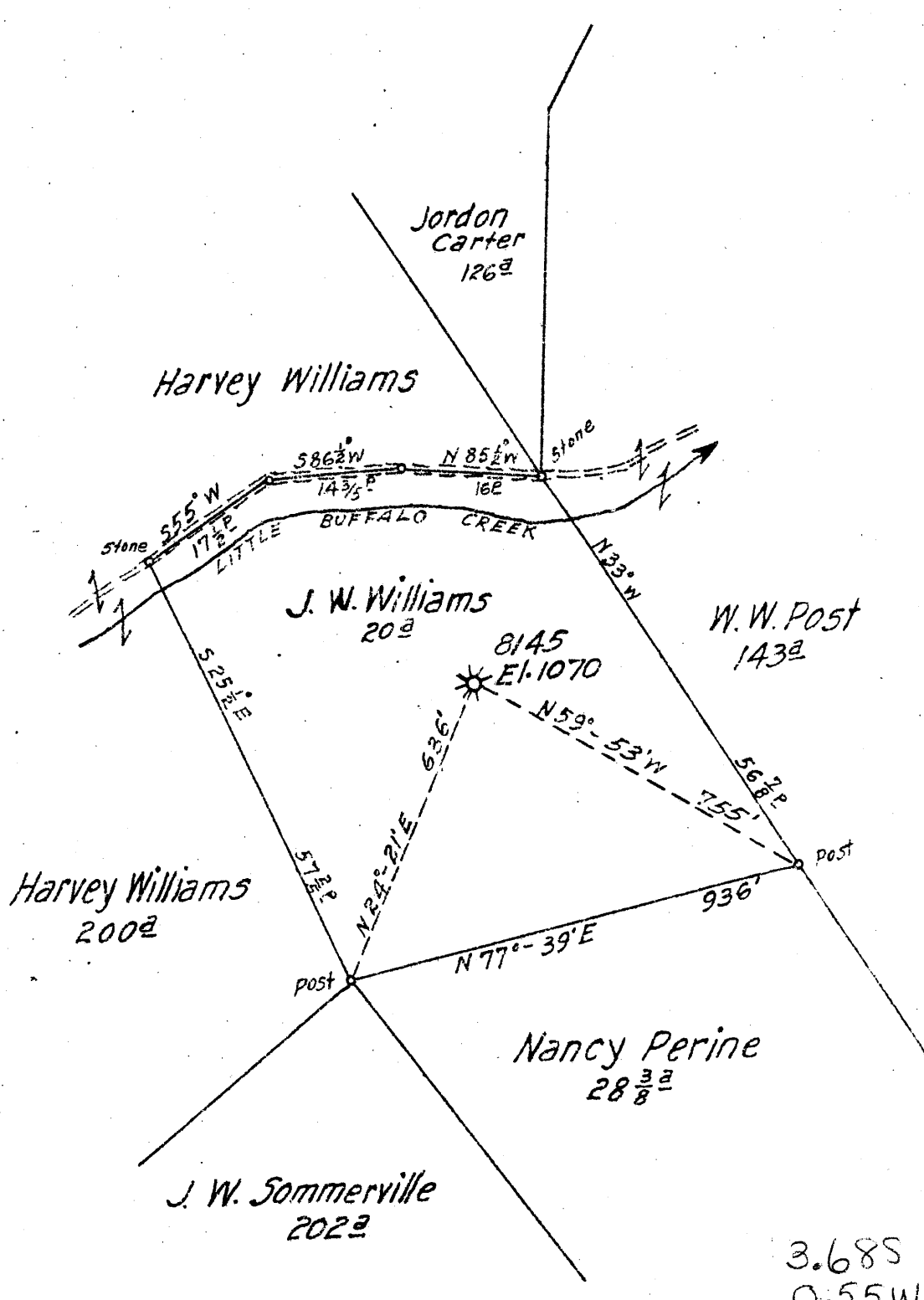
District Union

WELL LOCATION MAP

File No. HAR-1043A

0  
1  
2  
3

Longitude 81 25



3.685  
0.55W

New Location   
 Drill Deeper   
 Abandonment

Map Sheet 55 - Square 518 E 10 - F.B. 727 P.3

Company Hope Natural Gas Co  
 Address Clarksburg, W. Va.  
 Farm J. W. Williams  
 Tract \_\_\_\_\_ Acres 20 Lease No. 52918  
 Well (Farm) No. 1 Serial No. 8145  
 Elevation (Spirit Level) 1070  
 Quadrangle Weston  
 County Harrison District Union  
 Engineer W. M. Beavers  
 Engineer's Registration No. 900  
 File No. \_\_\_\_\_ Drawing No. \_\_\_\_\_  
 Date JAN. 9, 1947 Scale 1" = 20'

STATE OF WEST VIRGINIA  
 DEPARTMENT OF MINES  
 OIL AND GAS DIVISION  
 CHARLESTON

WELL LOCATION MAP  
 FILE NO. HAR-1043-A

+ Denotes location of well on United States Topographic Maps, scale 1 to 62,500, latitude and longitude lines being represented by border lines as shown.

- Denotes one inch spaces on border line of original tracing.