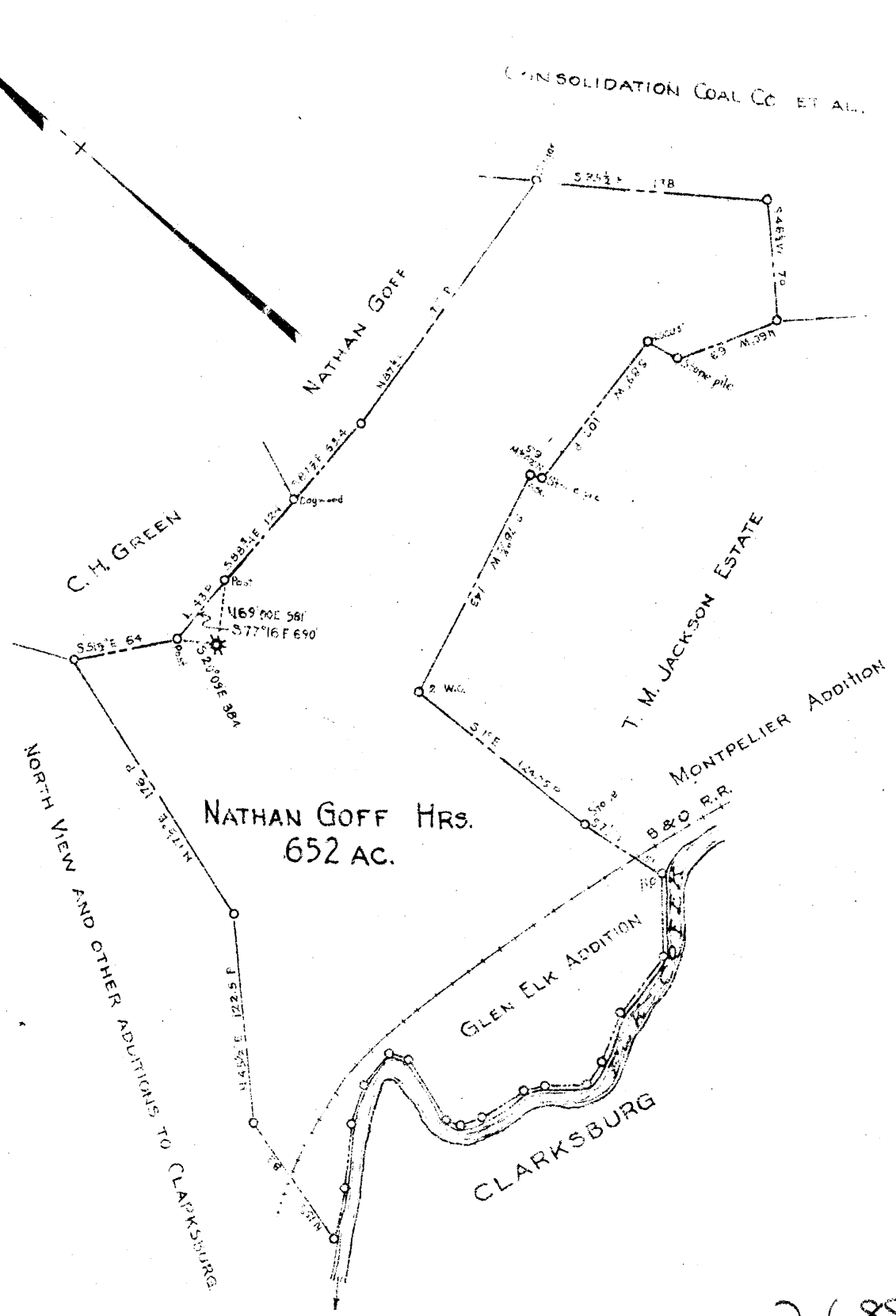


0
1
2
3



2.688
0.21W

New Location
Drill Deeper
Abandonment **X**

Company	Elk Hill Fuel Co.
Address	Clarksburg, W. Va.
Farm	Nathan Goff Hrs.
Tract	Acres 652 Lease No.
Well (Farm) No.	1 Serial No.
Elevation (Spirit Level)	1118
Quadrangle	Clarksburg
County	Harrison District Coal
Engineer	Paul A. Hornor
Engineer's Registration No.	602
File No.	Drawing No.
Date	3 Oct. 1946 Scale 1"=1500'

STATE OF WEST VIRGINIA
DEPARTMENT OF MINES
OIL AND GAS DIVISION
CHARLESTON

WELL LOCATION MAP
FILE NO. HAR-1021-A

+ Denotes location of well on United States Topographic Maps, scale 1 to 62,500. latitude and longitude lines being represented by border lines as shown.

- Denotes one inch spaces on border line of original tracing.



869

STATE OF WEST VIRGINIA
DEPARTMENT OF MINES
OIL AND GAS DIVISION

WELL RECORD

Permit No. HAR-1021-A

Oil or Gas Well GAS
(KIND)

Company Elk Hill Fuel Company
 Address Clarksburg, W. Va.
 Farm Nathan Goff Heirs Acres 652
 Location (waters) _____
 Well No. 1 Elev. 1118
 District Coal County Harrison
 The surface of tract is owned in fee by _____
 Address _____
 Mineral rights are owned by _____
 Address _____
 Drilling commenced November 1, 1921
 Drilling completed December 15, 1921
 Date Shot _____ From _____ To _____
 With _____
 Open Flow _____ /10ths Water in _____ Inch
 _____ /10ths Merc. in _____ Inch
 Volume _____ Cu. Ft.
 Rock Pressure _____ lbs. _____ hrs.
 Oil _____ bbls., 1st 24 hrs.
 Fresh water _____ feet _____ feet
 Salt water _____ feet _____ feet

Casing and Tubing	Used in Drilling	Left in Well	Packers
Size			
16			Kind of Packer
13			
10	116	116	Size of
8 1/4	1035	1025	
6 5/8	1509	1509	Depth set
5 3/16			
3			Perf. top
2			Perf. bottom
Liners Used			Perf. top
			Perf. bottom

CASING CEMENTED SIZE 10" No. Ft. 116 Date

COAL WAS ENCOUNTERED AT 51 ⁶⁰ FEET ~~INCHES~~ INCHES
 _____ FEET _____ INCHES FEET _____ INCHES
 _____ FEET _____ INCHES FEET _____ INCHES

Formation	Color	Hard or Soft	Top	Bottom	Oil, Gas or Water	Depth Found	Remarks
Pittsburgh coal			51	60			
Little Dunkard			330	370			
Big Dunkard			490	530			
Gas sand			630	660			
First salt sand			700	800			
Second salt sand			820	940	Water	880	
Third salt sand			950	1005			
Maxton sand			1335	1400			
Little lime			1430	1450			
Pencil cave			1450	1465			
Big lime			1465	1525			
Big Injun			1525	1610	Gas	1580-1598-1603	
Fifty foot sand			2015	2030			
Thirty foot sand			2140	2180			
Gordon stray			2185	2355			
Gordon sand			2355	2375			
Fourth sand			2415	2438			
Fifth sand			2490	2507			
Bayard sand			2512	2527	Gas	2519	
Total depth				2542			