

Latitude 39 20

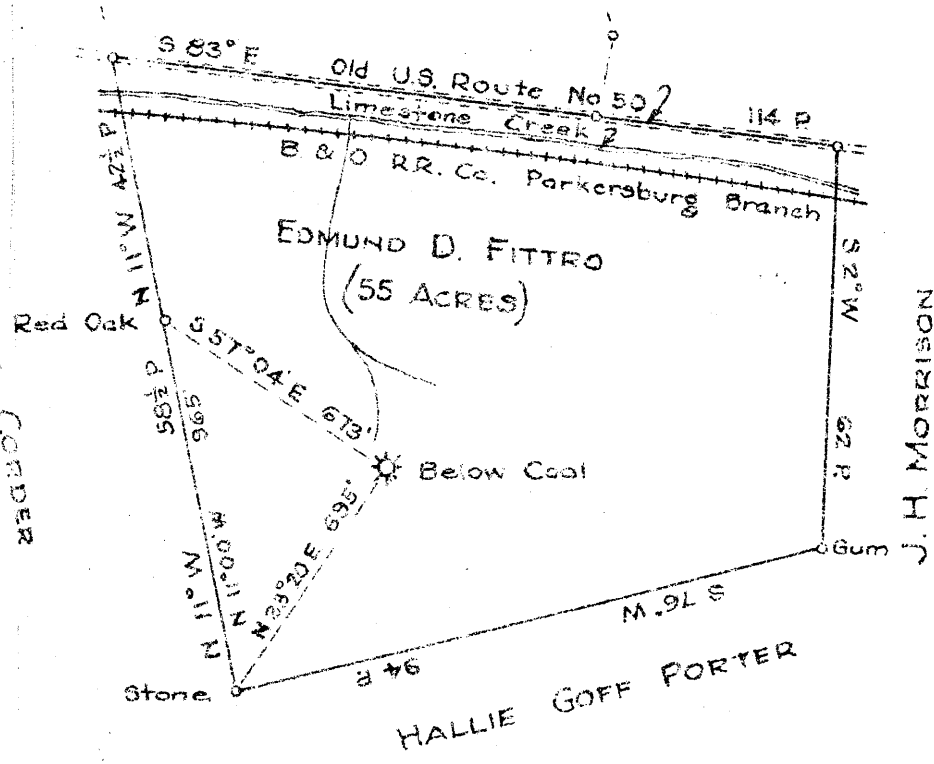
39 17 30

0.155  
0.13W

.155  
2.33W

3.03 S  
4.69 W

80 25°  
NANCY CORDER



calc 15' loc  
3.035 39 20  
0.13W 80 25

New Location   
Drill Deeper   
Abandonment

Company WASHINGTON GAS CO.  
 Address CLARKSBURG, W. VA.  
 Farm EDMUND D. FITTRO  
 Tract \_\_\_\_\_ Acres 55 Lease No. \_\_\_\_\_  
 Well (Farm) No. 1 Serial No. \_\_\_\_\_  
 Elevation (Spirit Level) 1175  
 Quadrangle CLARKSBURG SW  
 County HARRISON District CLARK  
 Engineer PAUL A. HORNOR  
 Engineer's Registration No. 602  
 File No. \_\_\_\_\_ Drawing No. \_\_\_\_\_  
 Date MAR. 29, 1946 Scale 1" = 500

STATE OF WEST VIRGINIA  
DEPARTMENT OF MINES  
OIL AND GAS DIVISION  
CHARLESTON

WELL LOCATION MAP  
FILE NO. HAR-967-A

+ Denotes location of well on United States Topographic Maps, scale 1 to 62,500, latitude and longitude lines being represented by border lines as shown.

- Denotes one inch spaces on border line of original tracing.

STATE OF WEST VIRGINIA  
DEPARTMENT OF MINES  
OIL AND GAS DIVISION

786

WELL RECORD

Ab  
957-A

Permit No. \_\_\_\_\_

Oil or Gas Well \_\_\_\_\_  
(KIND)

Company Washington Gas Company  
Address Clarksburg, W. Va.  
Farm Edmond D. Fittro Acres 55  
Location (waters) Limestone Creek  
Well No. 1 Elev. 1175'  
District Clark County Harrison  
The surface of tract is owned in fee by Edmond D. Fittro  
Address \_\_\_\_\_  
Mineral rights are owned by \_\_\_\_\_  
Address \_\_\_\_\_  
Drilling commenced October 1911  
Drilling completed December 1911  
Date Shot \_\_\_\_\_ From \_\_\_\_\_ To \_\_\_\_\_  
With \_\_\_\_\_

Casing and Tubing	Used in Drilling	Left in Well	Packers
Size			Kind of Packer
16			
13			
10	277		Size of
8 1/4	988		
6 5/8	1380	1380	Depth set
5 3/16	2368	2368	
3			Perf. top
2			Perf. bottom
Liners Used			Perf. top
			Perf. bottom

Open Flow \_\_\_\_\_ /10ths Water in \_\_\_\_\_ Inch  
\_\_\_\_\_ /10ths Merc. in \_\_\_\_\_ Inch  
Volume \_\_\_\_\_ Cu. Ft.  
Rock Pressure \_\_\_\_\_ lbs. \_\_\_\_\_ hrs.  
Oil \_\_\_\_\_ bbls., 1st 24 hrs.  
Fresh water 486 feet 916 feet  
Salt water \_\_\_\_\_ feet \_\_\_\_\_ feet

CASING CEMENTED \_\_\_\_\_ SIZE \_\_\_\_\_ No. Ft. \_\_\_\_\_ Date \_\_\_\_\_  
WELL DRILLED BELOW PITTSBURGH VEIN OF COAL  
COAL WAS ENCOUNTERED AT \_\_\_\_\_ FEET \_\_\_\_\_ INCHES  
\_\_\_\_\_ FEET \_\_\_\_\_ INCHES \_\_\_\_\_ FEET \_\_\_\_\_ INCHES  
\_\_\_\_\_ FEET \_\_\_\_\_ INCHES \_\_\_\_\_ FEET \_\_\_\_\_ INCHES

Formation	Color	Hard or Soft	Top	Bottom	Oil, Gas or Water	Depth Found	Remarks
Little Dunkard			374	400			
Big Dunkard			422	535	Water 486		
Gas Sand			690	731			
Gas Sand			748	840	Gas 752'		
FIRST SALT SAND			865	985	Water 916		
Second Salt Sand			1000	1016			
Little Lime			1307	1324			
Pencil Cave			1324	1334			
Big Lime			1334	1390			
Big Injun			1390	1508			
Berea Sand			1804	1835			
Fifty-foot sand			1900	1930			
Thirty-foot sand			1946	1976	Gas 1952'		
Stray Sand			1999	2023	Gas 2014		
Gordon Sand			2030	2040			
Fourth sand			2122	2156			
Fifth Sand			2333	2358	Gas 2337		
Speechley			3046	3056	Gas 3049		
Total Depth			3106				

911