

LATITUDE 39° 15'

LONGITUDE 80° 20'

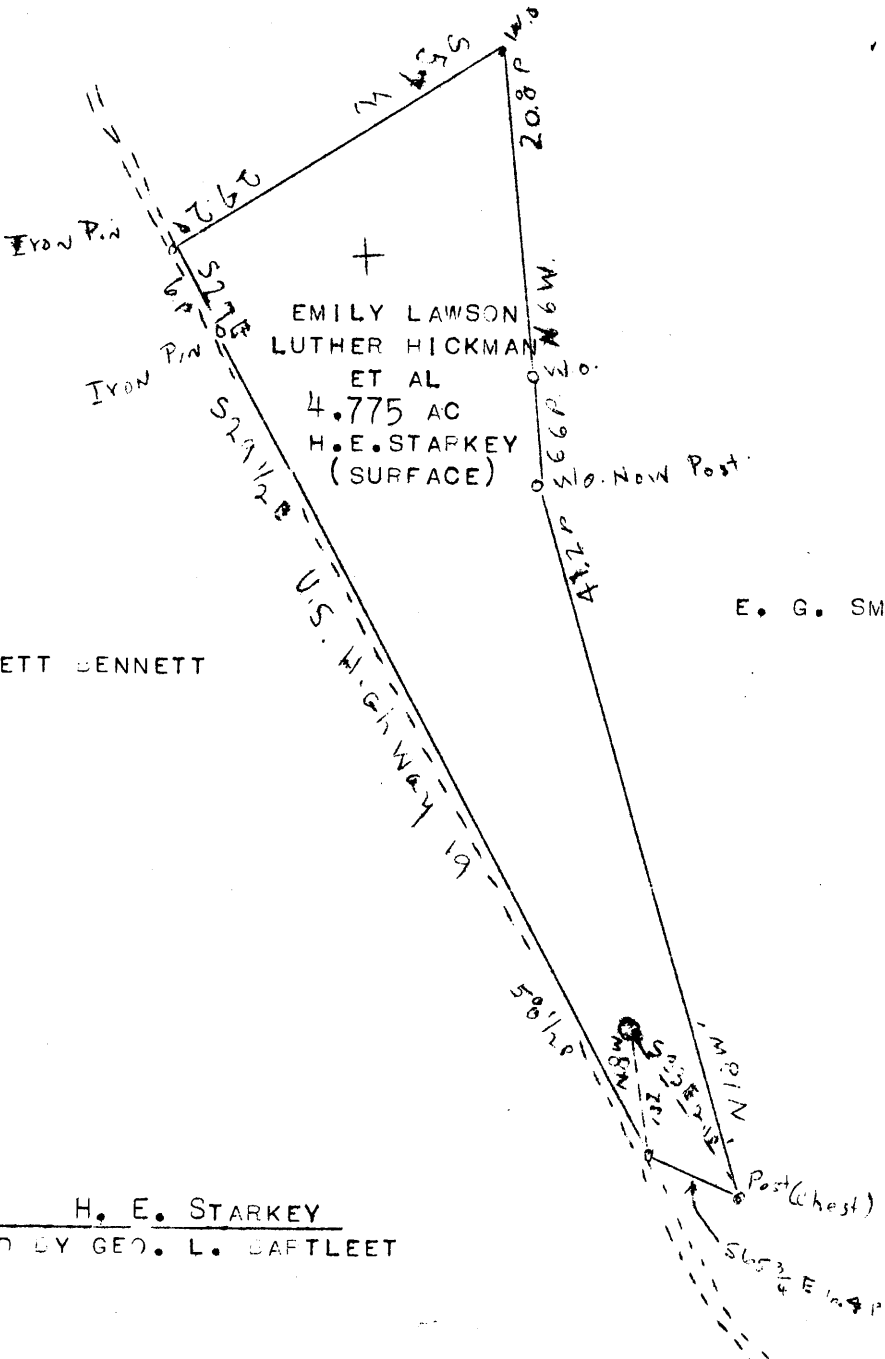
MARIE BENNETT

MARY BARTLETT

ORLETT BENNETT

E. G. SMITH

EMILY LAWSON
LUTHER HICKMAN
ET AL
4.775 AC
H. E. STARKEY
(SURFACE)



COAL OWNED BY H. E. STARKEY
OIL & GAS OWNED BY GEO. L. BARTLETT

3.14S
4.26W

NEW LOCATION
DRILL DEEPER
ABANDONMENT X

COMPANY CUMBERLAND AND ALLEGHENY GAS CO
 ADDRESS 800 UNION TRUST BLDG. PITTSBURGH, PA.
 FARM H. E. STARKEY SUB. GEO. L. BARTLETT O & G
 TRACT ACRES 4.775 LEASE NO. 5594
 WELL (FARM) NO. 1 SERIAL NO. A-285
 ELEVATION (SPIRIT LEVEL) 1008'
 QUADRANGLE WESTON
 COUNTY HARRISON DISTRICT UNION
 ENGINEER J. C. MERCER
 ENGINEER'S REGISTRATION NO. _____
 FILE NO. _____ DRAWING NO. Y-11-225
 DATE 3-4-46 SCALE 1" = 200'

STATE OF WEST VIRGINIA
DEPARTMENT OF MINES
OIL AND GAS DIVISION
CHARLESTON

WELL LOCATION MAP

FILE NO. HAR - 958 - A

+ DENOTES LOCATION OF WELL ON UNITED STATES TOPOGRAPHIC MAPS, SCALE 1 TO 62,500, LATITUDE AND LONGITUDE LINES BEING REPRESENTED BY BORDER LINES AS SHOWN.

- DENOTES ONE INCH SPACES ON BORDER LINE OF ORIGINAL TRACING.



790

STATE OF WEST VIRGINIA
DEPARTMENT OF MINES
OIL AND GAS DIVISION

WELL RECORD

Permit No. Drilled in 1912

Oil or Gas Well Gas
(KIND)

Company Cumberland and Allegheny Gas Company
Address 800 Union Trust Bldg., Pittsburgh, Pa.
Farm Emily Lawson (H E Starkey) Acres 4.775
Location (waters).....
Well No. 1 - 285 Elev. 1008 ft.
District Union County Harrison
The surface of tract is owned in fee by Robt L. Starkey
Address West Milford, WVa.
Mineral rights are owned by Cumberland and Allegheny
Gas Company Address Pittsburgh, Pa.

Drilling commenced ?
Drilling completed April, 1912
Date Shot From To
With

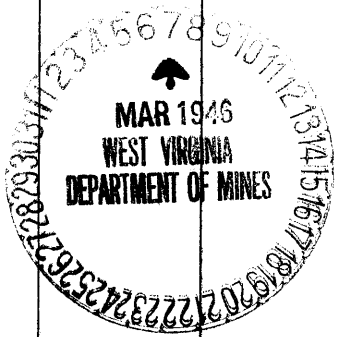
Open Flow /10ths Water in Inch
/10ths Merc. in Inch
Volume 81.465 in August, 1938 Cu. Ft.
Rock Pressure 70 lbs. in 1938 hrs.
Oil bbls., 1st 24 hrs.
Fresh water feet feet
Salt water feet feet

Casing and Tubing	Used in Drilling	Left in Well	Packers
Size			
16			Kind of Packer
18			
10	200'	-	Size of
8 1/4	770'	-	
6 3/4	1339'	-	Depth set
5 3/16			
3			Perf. top
2			Perf. bottom
Liners Used			Perf. top
			Perf. bottom

CASING CEMENTED SIZE No. Ft. Date

COAL WAS ENCOUNTERED AT FEET INCHES
FEET INCHES FEET INCHES
FEET INCHES FEET INCHES

Formation	Color	Hard or Soft	Top	Bottom	Oil, Gas or Water	Depth Found	Remarks
Big Injun			1342	1457			
50-Foot			1785	1846	Gas 1827-1829		
30-Foot			1875	1893			
Gordon Sand			2023	2053	Gas 2046-2051		
Total depth				2053			



Formation	Color	Hard or Soft	Top	Bottom	Oil, Gas or Water	Depth Found	Remarks

Date March 5th, 1946

APPROVED CUMBERLAND AND ALLEGHENY GAS COMPANY Owner

By Ben Cooper
Land Agent (Title)