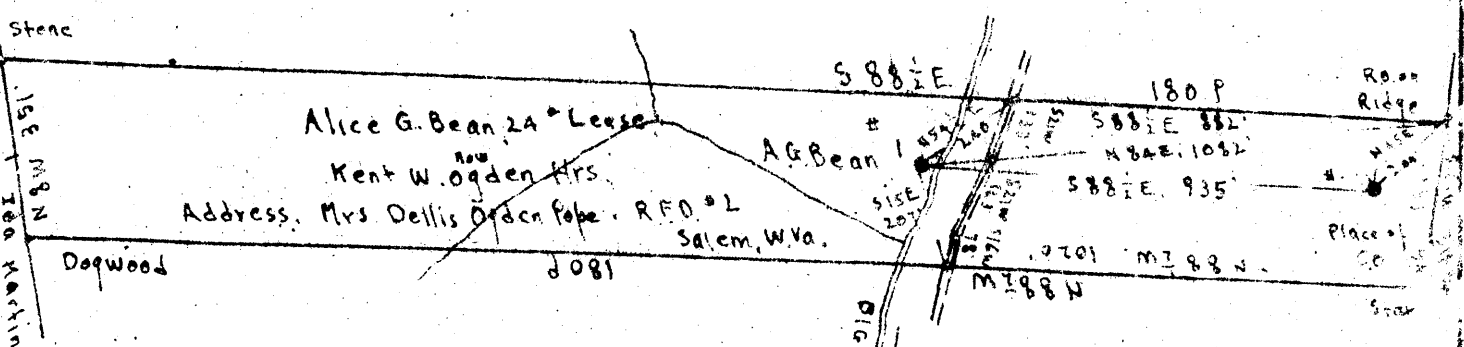


Scale 1" = 400'

Longitude 80 25'

Sallie Shaffer, 79 5/8" now Thos. E. Keyser



Kent W Ogden Hrs. 24 *

Coal Not Operated.

0.13S
3.58W

New Location

Drill Deeper

Abandonment

Squares. S 3. E 8

Company Road Supply Co.

Address Salem, W. Va.

Farm A G. Bean

Tract _____ Acres 24 Lease No. _____

Well (Farm) No. 1 Serial No. _____

Elevation (Spirit Level) 1011.31 Flasch - 1011.31
1010.81 Grant - 1010.81

Quarry Clarksburg

County Harrison District Sarah's

Engineer J. C. Tabler

Engineer's Registration No. _____

File No. _____ Drawing No. _____

Date July 17, 1945 Scale Scale 1" = 400'

STATE OF WEST VIRGINIA
DEPARTMENT OF MINES
OIL AND GAS DIVISION
CHARLESTON

WELL LOCATION MAP
FILE NO. HAR-922-A

+ Denotes location of well on United States Topographic Maps, scale 1 to 62,500, latitude and longitude lines being represented by border lines as shown.

- Denotes one inch spaces on border line of original tracing.



762

STATE OF WEST VIRGINIA
DEPARTMENT OF MINES
OIL AND GAS DIVISION

WELL RECORD

Permit No. 9221A Oil or Gas Well X (KIND)

Company Raad Supply Company
Address 184 E. Main St., Salem, W. Va.
Farm A. G. Bean Acres 24
Location (waters) Big Elk
Well No. 1 Elev. 1010.81
District Sardis County Harrison
The surface of tract is owned in fee by Kent W. Ogden Hrs.
Mrs. Dallis Ogden Hrs., R.F.D. #2
Mineral rights are owned by Salem, W. Va.
Mr. Truman E. Gore, et al.
Sheriff's Office, Clarksburg, W. Va.
Drilling commenced _____
Drilling completed November 24, 1913
Date Shot 12/14/13 From 2768' To 2777'
With 1/8/14 2777'
Open Flow 2/10/14 Water in _____ Inch
3/17/14 2777'
8/10/17 Merc. in _____ Inch
Volume _____ Cu. Ft.
Rock Pressure _____ lbs. _____ hrs.
Oil _____ bbls., 1st 24 hrs.
Fresh water _____ feet _____ feet
Salt water _____ feet _____ feet

Casing and Tubing	Used in Drilling	Left in Well	Packers
Size			
16			Kind of Packer
13			
10	320'	320'	Size of
8 1/4	1150'	1150'	
6 5/8	1930'	1930'	Depth set
5 3/16	2555'	2555'	
3			Perf. top
2	2789'	2789'	Perf. bottom
Liners Used			Perf. top
			Perf. bottom

CASING CEMENTED No SIZE _____ No. Ft. _____ Date _____
COAL WAS ENCOUNTERED AT 682 FEET 84 INCHES
_____ FEET _____ INCHES FEET _____ INCHES
_____ FEET _____ INCHES FEET _____ INCHES

Formation	Color	Hard or Soft	Top	Bottom	Oil, Gas or Water	Depth Found	Remarks
Pittsburgh Coal			675	682			
Big Dunkard			1143	1235			
Little Dunkard			1010	1045			
Gas Sand			1858	1343			
Salt Sand			1598	1628			
Maxon Sand			1821	1855			
Big Lime			1913	1967			
Big Injun			1967	2095			
Gas			1972		Gas 1972		
Fifty Foot			2539	2584			
Thirty Foot			2642	2665			
Stray Sand			2699	2743			
Gordon Sand			2754	2789			
1st. Pay			2777				
Total Depth				2789			

