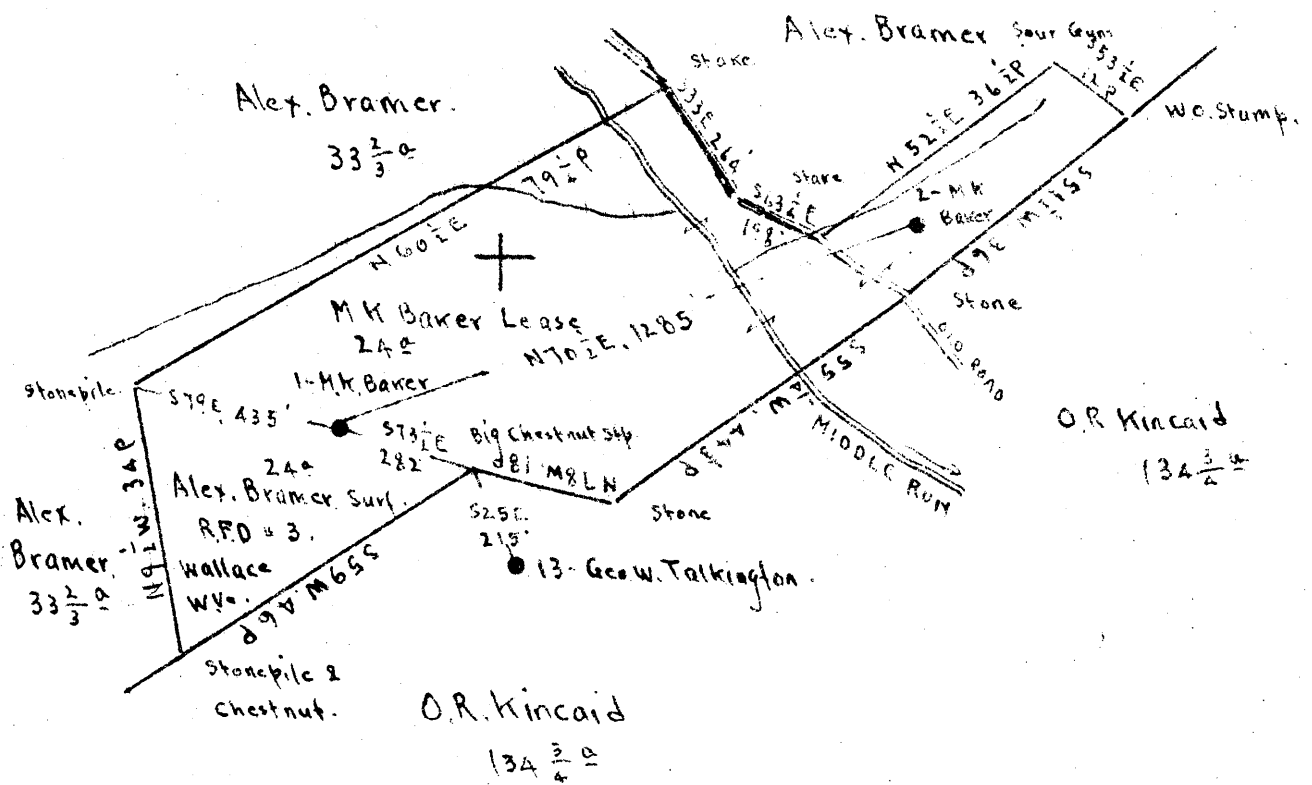


1
2
3

Scale. 1" = 400'

80° 25'



Pittsburgh Coal belonged to Short Line Fuel Co.
was sold to State of W.Va. for Taxes, 1932.

4.31S
4.44W

New Location
Drill Deeper
Abandonment

Squares. S1 E7

Company Road Supply Co.
 Address Salem, W.Va
 Farm M.K. Baker
 Tract Acres 24 Lease No. _____
 Well (Farm) No. 1 Serial No. _____
 Elevation (Spirit Level) Floor 1285.45
 Ground 1282.45
 Quadrangle Clarksburg
 County Marshall District Sardis
 Engineer E.C. Tabler
 Engineer's Registration No. _____
 File No. _____ Drawing No. _____
 Date July 26th 1945 Scale 1" = 400'

STATE OF WEST VIRGINIA
DEPARTMENT OF MINES
OIL AND GAS DIVISION
CHARLESTON

WELL LOCATION MAP
FILE NO. HAR-921-A

+ Denotes location of well on United States Topographic Maps, scale 1 to 62,500, latitude and longitude lines being represented by border lines as shown.
 - Denotes one inch spaces on border line of original tracing.



STATE OF WEST VIRGINIA
DEPARTMENT OF MINES
OIL AND GAS DIVISION

8N

AB
921-A

WELL RECORD

Oil or Gas Well _____ (KIND)

Permit No. _____

Company RAAD SUPPLY COMPANY

Address 184 E. Main St., Salem, W. Va.

Farm M. K. Baker Acres 24

Location (waters) _____

Well No. 1 Elev. 1282.45

District Sardis County Harrison

The surface of tract is owned in fee by Alex. Bramer
R. F. D. #3 Address Wallace, W. Va.

Mineral rights are owned by State of W. Va.
Sold for taxes 1928

Drilling commenced _____

Drilling completed Aug. 8, 1904

Date Shot 2/13/05 From 3174' To _____

With 12/21/08 3174'

Open Flow _____ /10ths Water in _____ Inch
_____ /10ths Merc. in _____ Inch

Volume _____ Cu. Ft.

Rock Pressure _____ lbs. _____ hrs.

Oil _____ bbls., 1st 24 hrs.

Fresh water _____ feet _____ feet

Salt water _____ feet _____ feet

Casing and Tubing	Used in Drilling	Left in Well	Packers
Size			
16			Kind of Packer
13			
10			Size of
8 1/4	1580'	1580'	
6 5/8	2520'	2520'	Depth set
5 3/16			
3			Perf. top
2	3250'	3250'	Perf. bottom
Liners Used			Perf. top
5x5 1/2	298'	298'	Perf. bottom

CASING CEMENTED **No** SIZE _____ No. Ft. _____ Date _____

COAL WAS ENCOUNTERED AT **1103** FEET **60** INCHES
192
FEET INCHES FEET INCHES
FEET INCHES FEET INCHES

Formation	Color	Hard or Soft	Top	Bottom	Oil, Gas or Water	Depth Found	Remarks
Pittsburgh Coal			1098'	1103'			
Dunkard Sand			1485	1610			
Salt Sand			1988	2128			
Maxon Sand			2160	2185			
Big Lime			2318	2398			
Big Injun			2398	2517			
Fifty Foot			2931	2966			
Stray Sand			3089	3152			
Gordon Sand			3160	3186			
Gas in Stray			3142				
1st. Pay			3175				
Total Depth				3250			

DEC 1945
DEPARTMENT OF MINES

