

0.60S  
3.40W

- New Location
- Drill Deeper
- Abandonment

Map Sheet 55 Squares S15E12 FB 512 R29

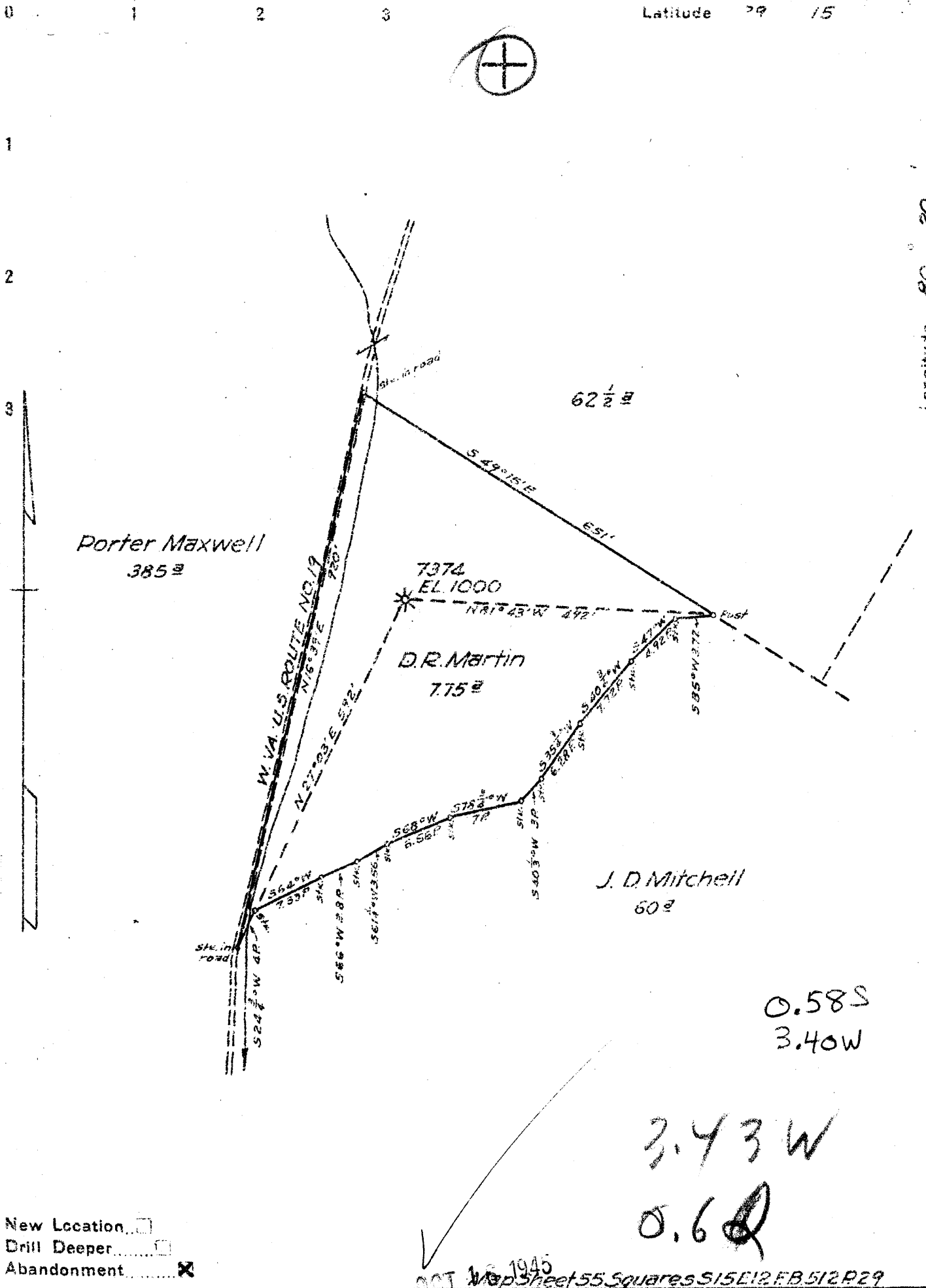
Company Hope Natural Gas Co.  
 Address Clarksburg, W. Va.  
 Farm D.R. Martin  
 Tract \_\_\_\_\_ Acres 7.75 Lease No. 44614  
 Well (Farm) No. \_\_\_\_\_ Serial No. 7374  
 Elevation (Spirit Level) 1000  
 Quadrangle Weston  
 County Harrison District Union  
 Engineer [Signature]  
 Engineer's Registration No. 920  
 File No. \_\_\_\_\_ Drawing No. \_\_\_\_\_  
 Date Oct. 2, 1945 Scale 1" = 200'

STATE OF WEST VIRGINIA  
 DEPARTMENT OF MINES  
 OIL AND GAS DIVISION  
 CHARLESTON

**WELL LOCATION MAP**  
 FILE NO. HAR-~~888-A~~  
898A

+ Denotes location of well on United States Topographic Maps, scale 1 to 62,500, latitude and longitude lines being represented by border lines as shown

- Denotes one inch spaces on border line of original tracing.



New Location   
 Drill Deeper   
 Abandonment

OCT 16 1945  
 Map Sheet 55 Squares S15E12R29

Company Hope Natural Gas Co  
 Address Clarksburg, W. Va.  
 Farm D.R. Martin  
 Tract Acres 7.75 Lease No. 44614  
 Well (Farm) No. 7374 Serial No. 44696  
 Elevation (Spirit Level) 1000  
 Quadrangle Weston  
 County Harrison District Union  
 Engineer [Signature]  
 Engineer's Registration No. 920  
 File No. \_\_\_\_\_ Drawing No. \_\_\_\_\_  
 Date Oct. 2, 1945 Scale 1" = 200'

STATE OF WEST VIRGINIA  
 DEPARTMENT OF MINES  
 OIL AND GAS DIVISION  
 CHARLESTON → 898A

WELL LOCATION MAP  
 FILE NO. HAR-898-A

[Signature] [Signature]

+ Denotes location of well on United States Topographic Maps, scale 1 to 62,500, latitude and longitude lines being represented by border lines as shown

- Denotes one inch spaces on border line of original tracing.

898-A

D. R. MARTIN NO. 7374 WELL.

898A

Union District, Harrison County, W. Va.

By Hope Natural Gas Co., 445 W. Main St., Clarksburg, W. Va.

Abandoned under permit Har-~~888~~-A? (or 898-A?). (Check when printed report comes in--No. ~~888~~-A is a duplicate No.)

On 7.75 acres.

Elevation, 1000' L.

Completed Oct. 11, 1920.

No water recorded.

10" casing, 120'; 8 $\frac{1}{4}$ " , 870'; 6 $\frac{5}{8}$ " , 1280'; 3" tubing, 3052'; all left in.

Casing not cemented.

No coal recorded.

Gas well. Abandonment reported to Dept. of Mines Oct. 3, 1945.

Record to RCT from Mrs. Griffith Dec. 5, 1945. Old File No. 743.

	Top.	Bottom.
Big Lime	1250	- 1305
Big Injun Sand	1305	- 1424
Shells (show gas, 1731')	1680	- 1735
Stray Sand	2042	- 2080
Gordon Sand	2090	- 2110
Fifth Sand (gas, 2200')	2197	- 2205
Speechley Sand (gas, 2905')	2903	- 2915
Total depth		2929



743

STATE OF WEST VIRGINIA  
DEPARTMENT OF MINES  
OIL AND GAS DIVISION

WELL RECORD

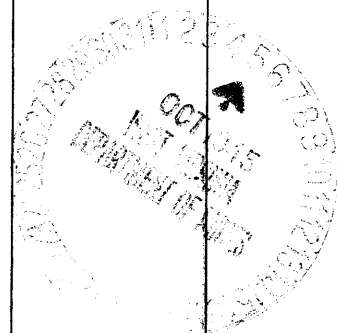
Permit No. 898A ~~888A-1~~ ~~888A-2~~ ~~888A-3~~ ~~888A-4~~ ~~888A-5~~ ~~888A-6~~ ~~888A-7~~ ~~888A-8~~ ~~888A-9~~ ~~888A-10~~ ~~888A-11~~ ~~888A-12~~ ~~888A-13~~ ~~888A-14~~ ~~888A-15~~ ~~888A-16~~ ~~888A-17~~ ~~888A-18~~ ~~888A-19~~ ~~888A-20~~ ~~888A-21~~ ~~888A-22~~ ~~888A-23~~ ~~888A-24~~ ~~888A-25~~ ~~888A-26~~ ~~888A-27~~ ~~888A-28~~ ~~888A-29~~ ~~888A-30~~ ~~888A-31~~ ~~888A-32~~ ~~888A-33~~ ~~888A-34~~ ~~888A-35~~ ~~888A-36~~ ~~888A-37~~ ~~888A-38~~ ~~888A-39~~ ~~888A-40~~ ~~888A-41~~ ~~888A-42~~ ~~888A-43~~ ~~888A-44~~ ~~888A-45~~ ~~888A-46~~ ~~888A-47~~ ~~888A-48~~ ~~888A-49~~ ~~888A-50~~ ~~888A-51~~ ~~888A-52~~ ~~888A-53~~ ~~888A-54~~ ~~888A-55~~ ~~888A-56~~ ~~888A-57~~ ~~888A-58~~ ~~888A-59~~ ~~888A-60~~ ~~888A-61~~ ~~888A-62~~ ~~888A-63~~ ~~888A-64~~ ~~888A-65~~ ~~888A-66~~ ~~888A-67~~ ~~888A-68~~ ~~888A-69~~ ~~888A-70~~ ~~888A-71~~ ~~888A-72~~ ~~888A-73~~ ~~888A-74~~ ~~888A-75~~ ~~888A-76~~ ~~888A-77~~ ~~888A-78~~ ~~888A-79~~ ~~888A-80~~ ~~888A-81~~ ~~888A-82~~ ~~888A-83~~ ~~888A-84~~ ~~888A-85~~ ~~888A-86~~ ~~888A-87~~ ~~888A-88~~ ~~888A-89~~ ~~888A-90~~ ~~888A-91~~ ~~888A-92~~ ~~888A-93~~ ~~888A-94~~ ~~888A-95~~ ~~888A-96~~ ~~888A-97~~ ~~888A-98~~ ~~888A-99~~ ~~888A-100~~

Company Hope Natural Gas Company.  
Address 445 West Main St. Clarksburg, W. Va.  
Farm D.R. Martin Acres 7.75  
Location (waters) \_\_\_\_\_  
Well No. 7374 Elev. 1000  
District Union County Harrison  
The surface of tract is owned in fee by \_\_\_\_\_  
Address \_\_\_\_\_  
Mineral rights are owned by \_\_\_\_\_  
Address \_\_\_\_\_  
Drilling commenced \_\_\_\_\_  
Drilling completed October 11, 1920  
Date Shot \_\_\_\_\_ From \_\_\_\_\_ To \_\_\_\_\_  
With \_\_\_\_\_  
Open Flow \_\_\_\_\_ /10ths Water in \_\_\_\_\_ Inch  
\_\_\_\_\_ /10ths Merc. in \_\_\_\_\_ Inch  
Volume \_\_\_\_\_ Cu. Ft.  
Rock Pressure \_\_\_\_\_ lbs. \_\_\_\_\_ hrs.  
Oil \_\_\_\_\_ bbls., 1st 24 hrs.  
Fresh water none recorded feet \_\_\_\_\_ feet  
Salt water none recorded feet \_\_\_\_\_ feet

Casing and Tubing	Used in Drilling	Left in Well	Packers
Size			
16			Kind of Packer
13			
10	<u>120</u>	<u>120</u>	Size of
8 1/4	<u>870</u>	<u>870</u>	
6 5/8	<u>1280</u>	<u>1280</u>	Depth set
5 3/16			
3	<u>3052</u>	<u>3052</u>	Perf. top
2			Perf. bottom
Liners Used			Perf. top
			Perf. bottom

**Not cemented**  
CASING CEMENTED \_\_\_\_\_ SIZE \_\_\_\_\_ No. Ft. \_\_\_\_\_ Date \_\_\_\_\_  
**none recorded**  
COAL WAS ENCOUNTERED AT \_\_\_\_\_ FEET \_\_\_\_\_ INCHES  
\_\_\_\_\_ FEET \_\_\_\_\_ INCHES FEET \_\_\_\_\_ INCHES  
\_\_\_\_\_ FEET \_\_\_\_\_ INCHES FEET \_\_\_\_\_ INCHES

Formation	Color	Hard or Soft	Top	Bottom	Oil, Gas or Water	Depth Found	Remarks
	Big Lime		1250	1305			
	Big Injun		1305	1424			
	Shells		1680	1735	show gas	1731	
	Stray		2042	2080			
	Gordon		2090	2110			
✓	Fifth		2197	2205	gas	2200	
✓	Speechley		2903	2915	gas	2905	
	Total depth			2929			



Formation	Color	Hard or Soft	Top	Bottom	Oil, Gas or Water	Depth Found	Remarks

Date October 3, 1945., 194

APPROVED Hope Natural Gas Company., Owner

By *[Signature]*  
Ass't. to Gen. Sup. (Title)