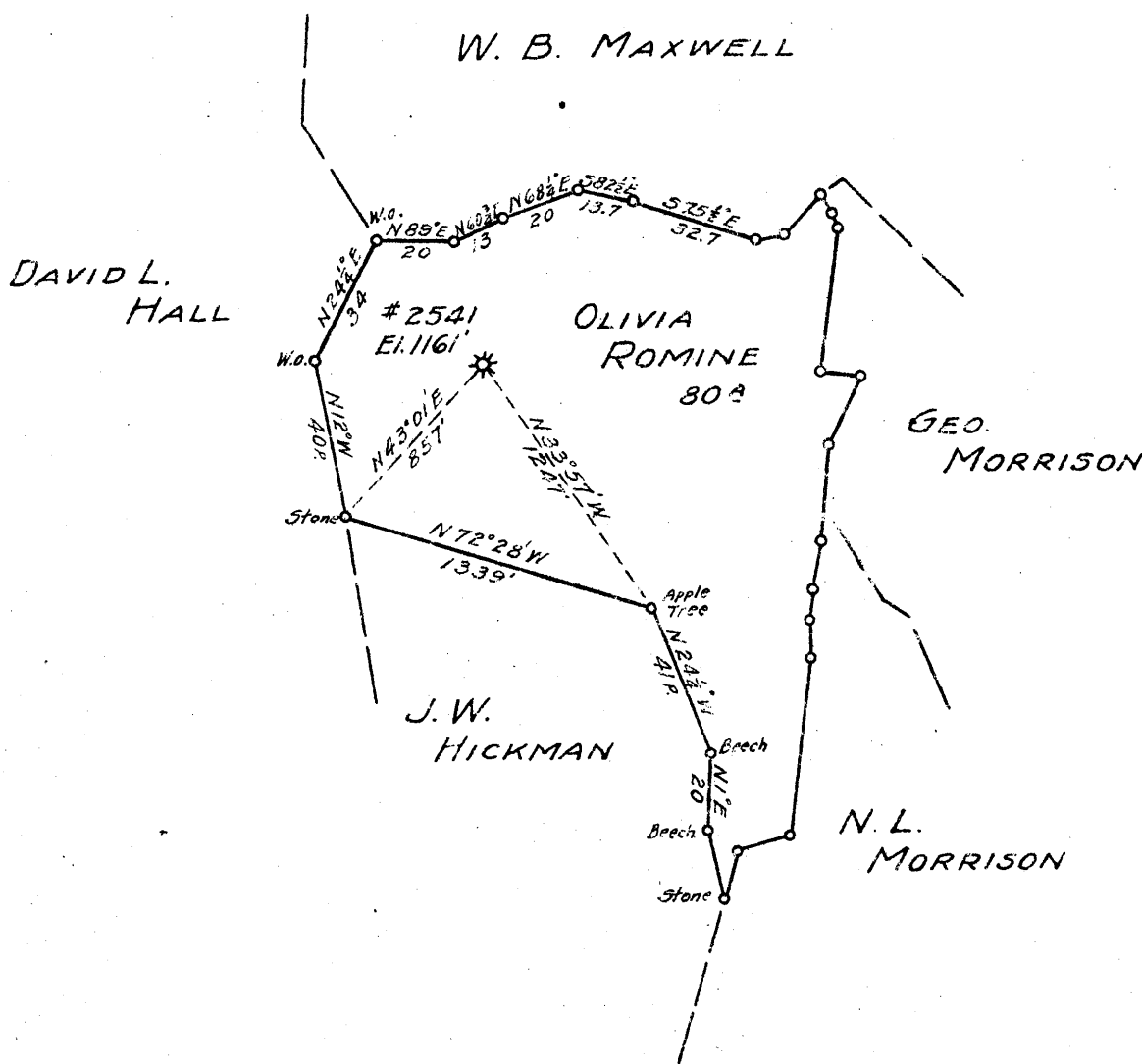


1.825  
3.87 W

1.805  
3.81 W



- New Location...
- Drill Deeper.....
- Abandonment.....

Map Sh. 55 Sq. S-16 E-11 F.B. 529 P. 20-25

Company HOPE NATURAL GAS CO.  
 Address CLARKSBURG, W. VA.  
 Farm OLIVIA ROMINE  
 Tract \_\_\_\_\_ Acres 80 Lease No. 14029  
 Well (Farm) No. \_\_\_\_\_ Serial No. 2541  
 Elevation (Spirit Level) 1161'  
 Quadrangle WESTON  
 County HARRISON District UNION  
 Engineer W. M. Bowers  
 Engineer's Registration No. 900  
 File No. \_\_\_\_\_ Drawing No. \_\_\_\_\_  
 Date 6-21-45 Scale 1" = 800'

STATE OF WEST VIRGINIA  
 DEPARTMENT OF MINES  
 OIL AND GAS DIVISION  
 CHARLESTON

**WELL LOCATION MAP**  
 FILE NO. HAR-865-A

+ Denotes location of well on United States Topographic Maps, scale 1 to 62,500, latitude and longitude lines being represented by border lines as shown.

- Denotes one inch spaces on border line of original tracing.



STATE OF WEST VIRGINIA  
DEPARTMENT OF MINES  
OIL AND GAS DIVISION

719

Permit No. 865/A

WELL RECORD

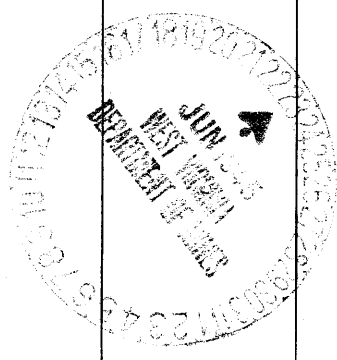
Oil or Gas Well (KIND)

Company Hope Natural Gas Company.  
 Address 445 West Main St. Clarksburg, W. Va.  
 Farm Oliva Romine Acres 80  
 Location (waters) \_\_\_\_\_  
 Well No. 2541 Elev. 1161  
 District Union County Harrison  
 The surface of tract is owned in fee by \_\_\_\_\_  
 Address \_\_\_\_\_  
 Mineral rights are owned by \_\_\_\_\_  
 Address \_\_\_\_\_  
 Drilling commenced July 15, 1912  
 Drilling completed August 15, 1912  
 Date Shot \_\_\_\_\_ From \_\_\_\_\_ To \_\_\_\_\_  
 With \_\_\_\_\_  
 Open Flow \_\_\_\_\_ /10ths Water in \_\_\_\_\_ Inch  
 \_\_\_\_\_ /10ths Merc. in \_\_\_\_\_ Inch  
 Volume \_\_\_\_\_ Cu. Ft.  
 Rock Pressure \_\_\_\_\_ lbs. \_\_\_\_\_ hrs.  
 Oil \_\_\_\_\_ bbls., 1st 24 hrs.  
 Fresh water none recorded feet \_\_\_\_\_ feet  
 Salt water none recorded feet \_\_\_\_\_ feet

Casing and Tubing	Used in Drilling	Left in Well	Packers
Size			
16			Kind of Packer
13			
10			Size of
8 1/4	<b>1024</b>	<b>Pulled</b>	
6 5/8	<b>1513</b>	<b>1513</b>	Depth set
5 3/16			
3			Perf. top
2	<b>3126</b>	<b>3126</b>	Perf. bottom
Liners Used			Perf. top
			Perf. bottom

**Not cemented**  
 CASING CEMENTED \_\_\_\_\_ SIZE \_\_\_\_\_ No. Ft. \_\_\_\_\_ Date \_\_\_\_\_  
**none recorded**  
 COAL WAS ENCOUNTERED AT \_\_\_\_\_ FEET \_\_\_\_\_ INCHES  
 \_\_\_\_\_ FEET \_\_\_\_\_ INCHES \_\_\_\_\_ FEET \_\_\_\_\_ INCHES  
 \_\_\_\_\_ FEET \_\_\_\_\_ INCHES \_\_\_\_\_ FEET \_\_\_\_\_ INCHES

Formation	Color	Hard or Soft	Top	Bottom	Oil, Gas or Water	Depth Found	Remarks
Little Dunkard			425	465			
Big Dunkard			510	560			
Gas sand			700	725			
First Salt			810	850			
Second Salt			865	978			
Maxon			1315	1340			
Little Lime			1450	1470			
Big Lime			1480	1506			
Big Injun			1506	1619	gas	1553	
Squaw			1628	1728			
Berea			1742	1763			
Gantz			1850	1935			
Fifty foot			1966	2026	gas	2006	
Thirty Foot			2066	2081	gas	2069 2072	
Gordon Stray			2179	2208			
Gordon			2211	2296			
Fourth			2320	2336			
Fifth			2397	2414	gas	2399 2402	
Speechley			3090	3099	gas	3095	
Total depth				3126			



Formation	Color	Hard or Soft	Top	Bottom	Oil, Gas or Water	Depth Found	Remarks

Date June 21, 1945, 194

APPROVED Hope Natural Gas Company, Owner

By *[Signature]* (Title)

Ass't. to Gen. Sup't.

