

LATITUDE 39° 27' 30"

LONGITUDE 80° 17' 30"



1.440  
1.620

7'5 OGIS topo location

7.5' loc \_\_\_\_\_ 15' loc \_\_\_\_\_  
(calc.) \_\_\_\_\_

Company HNO Co (2983)

Farm Mary Odell

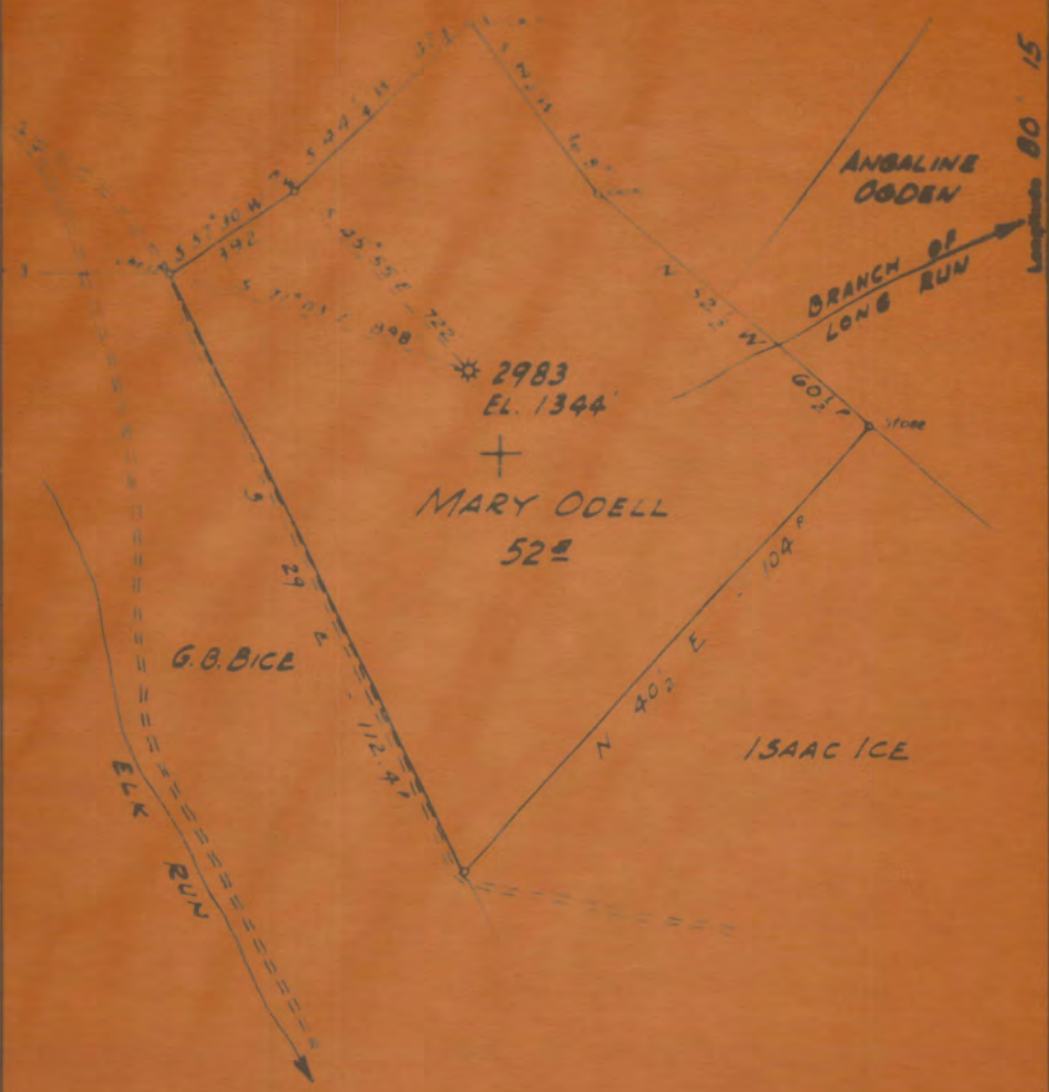
Quad Shinnston 7'12

County Harrison

District Clay (2)

WELL LOCATION MAP

File No. 033 - 30839



New Location  
 Drill Deeper  
 Abandonment X

033-30839

FB 560 P 36

Company HOPE NATURAL GAS CO  
 Address CLARKSBURG, W.VA.  
 Farm MARY ODELL

STATE OF WEST VIRGINIA  
 DEPARTMENT OF MINES  
 OIL AND GAS DIVISION  
 CHARLESTON







STATE OF WEST VIRGINIA  
DEPARTMENT OF MINES  
OIL AND GAS DIVISION

## INSPECTOR'S WELL REPORT

Permit No. **HAR-879**

Oil or Gas Well Gas  
(KIND)

Company	Hope Natural Gas Co.		CASING AND TUBING	USED IN DRILLING	LEFT IN WELL	PACKERS
Address	Clarksburg, W. Va.		Size			
Farm	Mary Odell		16			Kind of Packer
Well No.	2985		13			Size of
District	Clay	County Harrison	10			
Drilling commenced			8 1/2			Depth set
Drilling completed	Total depth		6 1/2			
Date shot	Depth of shot		5 3/16			Perf. top
Initial open flow	710 lbs. Water in	Inch	3			Perf. bottom
Open flow after tubing	10 lbs. Merc. in	Inch	Liners Used			Perf. top
Volume		Cu. Ft.				Perf. bottom
Rock pressure	lbs	lbs	CASING CEMENTED	SIZE	No. FT.	Date
Oil	bars, 1st 24 hrs		COAL WAS ENCOUNTERED AT		FEET	INCHES
Fresh water	feet	feet	FEET	INCHES	FEET	INCHES
Salt water	feet	feet	FEET	INCHES	FEET	INCHES

Drillers' Names **John L. Portney and Chas. W. Reynolds**

Well Abandoned and Plugged **Feb. 20th** 19 **45**

REMARKS: Job Completed, filled, plugged and marked. Left 700' of 6 5/8" casing in well. No gas showing at 1060'. Well record attached, App-d-wit to be filled.

STATE OF WEST VIRGINIA  
DEPARTMENT OF MINES  
OIL AND GAS DIVISION

INSPECTOR'S WELL REPORT

Oil or Gas Well OGS

Permit No. 4622

Company W. J. Adams and Company  
 Address 1111 1/2 Adams St. Parkersburg, W. Va.  
 Farm 1111 1/2 Adams St.  
 Well No. 4622  
 District 1-1-1  
 Drilling commenced \_\_\_\_\_  
 Drilling completed \_\_\_\_\_  
 Date shut \_\_\_\_\_  
 Initial open flow \_\_\_\_\_  
 Open flow after casing \_\_\_\_\_  
 Values \_\_\_\_\_  
 Back pressure \_\_\_\_\_  
 Oil \_\_\_\_\_  
 Fresh water \_\_\_\_\_  
 Salt water \_\_\_\_\_

CASING AND TUBING	USED IN DRILLING	LEFT IN WELL	PACKERS	
1 1/2"			Kind of Packer _____	
1 1/2"			Size of _____	
1 1/2"			Depth set _____	
2"			Perf. top _____	
2"			Perf. bottom _____	
2"			Perf. top _____	
2"			Perf. bottom _____	
CASING CEMENTED	SIZE	No. FT.	Date	
COAL WAS ENCOUNTERED AT			FEET	INCHES
	FEET	INCHES	FEET	INCHES
	FEET	INCHES	FEET	INCHES

Drillers' Names \_\_\_\_\_

Well Adjuncts and Plug \_\_\_\_\_

REMARKS Well shut in due to 1000 psi pressure with gas. To show no gas above 1000 psi, left back valve open 24 hrs. No gas above 1000 psi. Well set back at 1000 psi.