

0.10S  
0.63W

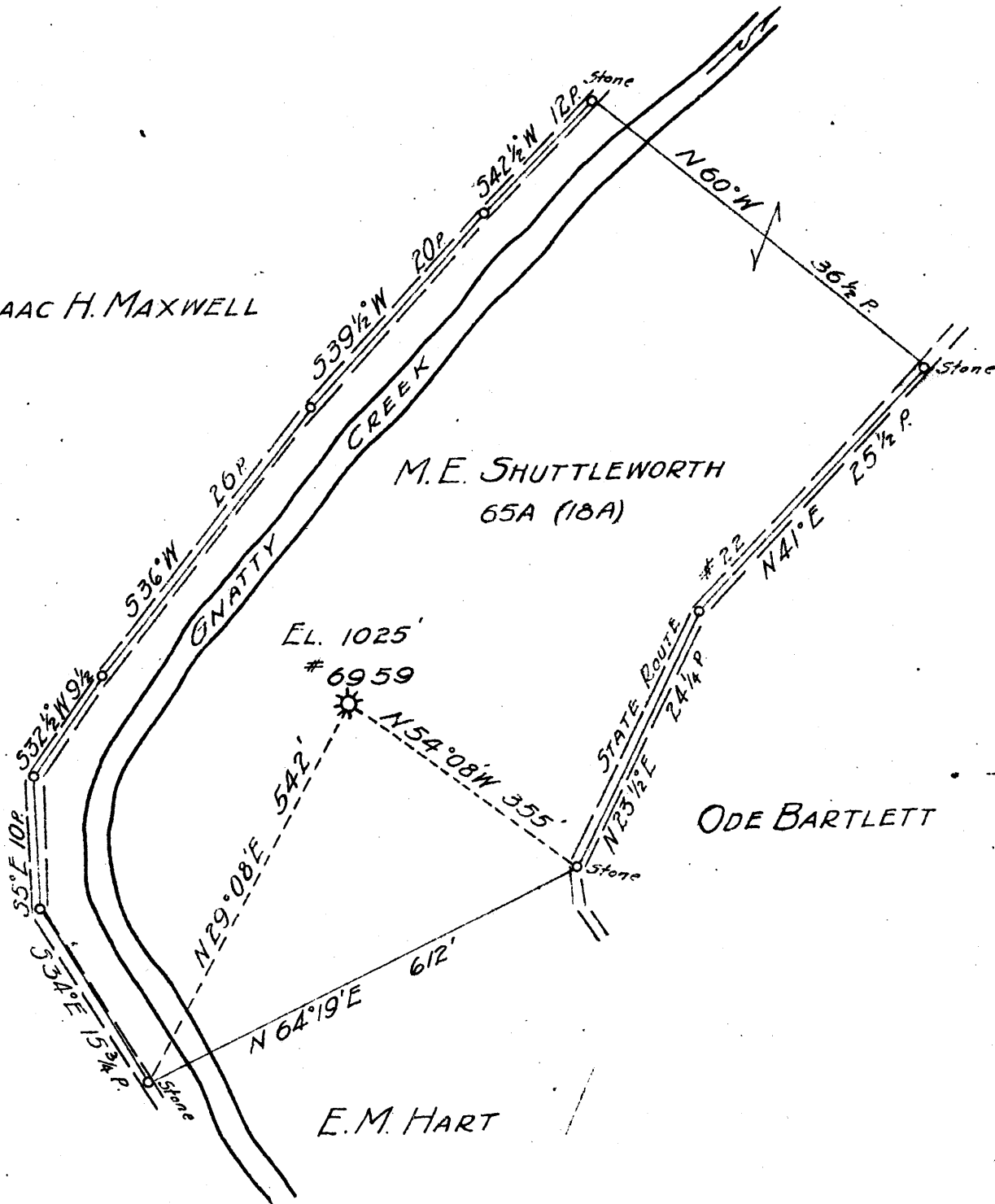
Longitude 80 15

ISAAC H. MAXWELL

M.E. SHUTTLEWORTH  
65A (18A)

ODE BARTLETT

E.M. HART



New Location  
Drill Deeper  
Abandonment

MAP SHEET 56 SQ. 521 E-19 N.B. 516 P.23

Company HOPE NATURAL GAS Co.  
 Address CLARKSBURG, W. VA.  
 Farm M.E. SHUTTLEWORTH  
 Tract \_\_\_\_\_ Acres 65 Lease No. 43750  
 Well (Farm) No. \_\_\_\_\_ Serial No. 6959  
 Elevation (Spirit Level) 1025'  
 Quadrangle WESTON  
 County HARRISON District ELK  
 Engineer W.M. Bowers  
 Engineer's Registration No. 900  
 File No. \_\_\_\_\_ Drawing No. \_\_\_\_\_  
 Date 5-9-44 Scale 1" = 200'

STATE OF WEST VIRGINIA  
DEPARTMENT OF MINES  
OIL AND GAS DIVISION  
CHARLESTON

WELL LOCATION MAP  
FILE NO. HAR-806-A

+ Denotes location of well on United States Topographic Maps, scale 1 to 62,500, latitude and longitude lines being represented by border lines as shown.

- Denotes one inch spaces on border line of original tracing.



STATE OF WEST VIRGINIA  
DEPARTMENT OF MINES  
OIL AND GAS DIVISION

645

WELL RECORD

Permit No. 806-A

Oil or Gas Well  
(KIND)

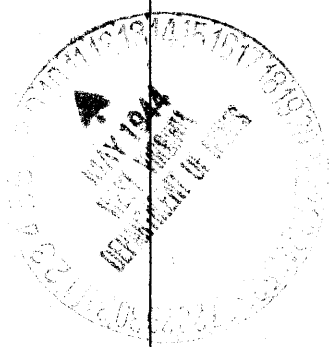
Company Hope Natural Gas Company.  
Address 445 West Main St. Clarkburg, W. Va.  
Farm Martha E. Shuttleworth Acres 65  
Location (waters) (M.E.)  
Well No. 6959 Elev. 916  
District Elk County Harrison  
The surface of tract is owned in fee by \_\_\_\_\_  
Address \_\_\_\_\_  
Mineral rights are owned by \_\_\_\_\_  
Address \_\_\_\_\_  
Drilling commenced February 21, 1926  
Drilling completed May 13, 1926  
Date Shot \_\_\_\_\_ From \_\_\_\_\_ To \_\_\_\_\_  
With purchased well

Casing and Tubing	Used in Drilling	Left in Well	Packers
Size			
16			Kind of Packer
13			
10	185	185	Size of
8 1/4	795	795	
6 1/2	1870	1870	Depth set
5 3/16			
3	4272	Pulled	Perf. top
2			Perf. bottom
Liners Used			Perf. top
			Perf. bottom

Open Flow /10ths Water in \_\_\_\_\_ Inch  
/10ths Merc. in \_\_\_\_\_ Inch  
Volume \_\_\_\_\_ Cu. Ft.  
Rock Pressure \_\_\_\_\_ lbs \_\_\_\_\_ hrs.  
Oil \_\_\_\_\_ bbls., 1st 24 hrs.  
Fresh water 220 feet \_\_\_\_\_ feet  
Salt water none recorded feet 1715 feet

**Not cemented**  
CASING CEMENTED \_\_\_\_\_ SIZE \_\_\_\_\_ No. Ft. \_\_\_\_\_ Date \_\_\_\_\_  
**None recorded**  
COAL WAS ENCOUNTERED AT \_\_\_\_\_ FEET \_\_\_\_\_ INCHES  
\_\_\_\_\_ FEET \_\_\_\_\_ INCHES \_\_\_\_\_ FEET \_\_\_\_\_ INCHES  
\_\_\_\_\_ FEET \_\_\_\_\_ INCHES \_\_\_\_\_ FEET \_\_\_\_\_ INCHES

Formation	Color	Hard or Soft	Top	Bottom	Oil, Gas or Water	Depth Found	Remarks
Sand			100	120			
Lime			200	225	water	220	
Sand			250	260			
Sand			350	360			
Gas sand			490	548			
Salt sand			650	785			
Sand			795	890			
Sand			930	990			
Maxon			1090	1150			
Little Lime			1215	1225			
Pencil cave			1225	1236			
Big Lime			1236	1350			
Big Injun			1350	1480			
Gantz			1690	1815	water	1715	
Fifty foot			1840	1900			
Thirty Foot			1910	1945			
Stray			2080	2095			
Gordon sand			2100	2120			
Fourth sand			2140	2150			
Fifth sand			2212	2233			
Gritty Lime			2263	2275	gas	2267	
Speechley			2909	2912			
Benson sand			4203	4218	gas	4205	
Total depth				4272			



(C) (M)

Formation	Color	Hard or Soft	Top	Bottom	Oil, Gas or Water	Depth Found	Remarks

Date May 9, 1944, 194

APPROVED Hope Natural Gas Company, Owner

By [Signature] Gen. Supt.  
(Title)