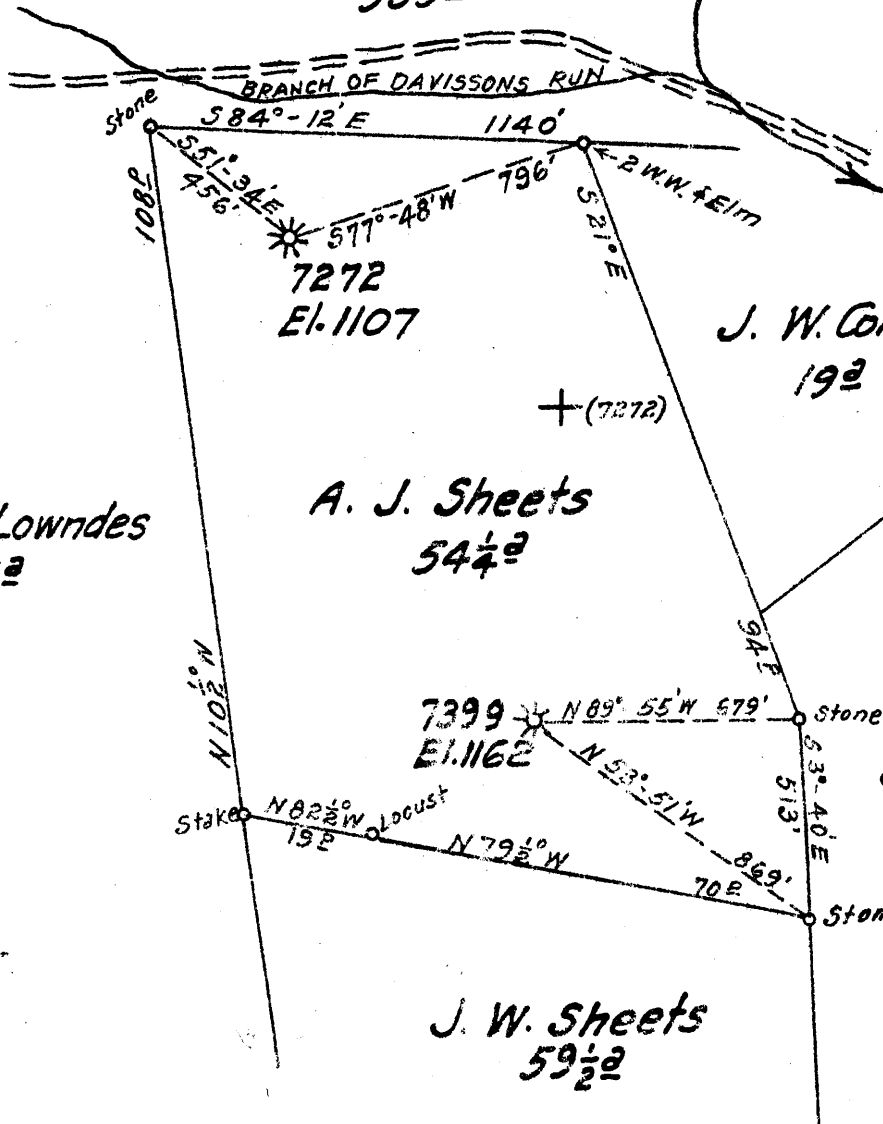


May Goff Lowndes  
535<sup>±</sup>



May Goff Lowndes  
535<sup>±</sup>

A. J. Sheets  
54¼<sup>±</sup>

J. W. Cork  
19<sup>±</sup>

J. E. Cork  
87<sup>±</sup>

J. W. Sheets  
59½<sup>±</sup>

H.30S  
3.44W

New Location   
 Drill Deeper   
 Abandonment  PARTIAL

F.B. 472 P. 35-36

Company Hope Natural Gas Co.  
 Address Clarksburg, W. Va.  
 Farm A. J. Sheets  
 Tract \_\_\_\_\_ Acres 54¼ Lease No. 44527  
 Well (Farm) No. \_\_\_\_\_ Serial No. 7272-7399  
 Elevation (Spirit Level) 1107-1162  
 Quadrangle Clarksburg W. Va.  
 County Harrison District Clark  
 Engineer Wm Bowers  
 Engineer's Registration No. 900  
 File No. \_\_\_\_\_ Drawing No. \_\_\_\_\_  
 Date OCT. 15, 1943 Scale 1" = 30<sup>±</sup>

STATE OF WEST VIRGINIA  
 DEPARTMENT OF MINES  
 OIL AND GAS DIVISION  
 CHARLESTON

WELL LOCATION MAP  
 FILE NO. HAR-786-A - # 739

+ Denotes location of well on United States Topographic Maps, scale 1 to 62,500, latitude and longitude lines being represented by border lines as shown.

- Denotes one inch spaces on border line of original tracing.



STATE OF WEST VIRGINIA  
DEPARTMENT OF MINES  
OIL AND GAS DIVISION

627

Permit No. 786-A

WELL RECORD

Oil or Gas Well (KIND)

Company Hope Natural Gas Company.  
 Address 445 West Main St. Clarkeburg, W. Va.  
 Farm A. J. Sheets Acres 60  
 Location (waters) \_\_\_\_\_  
 Well No. 7399 Elev. 1162  
 District Clark County Harrison  
 The surface of tract is owned in fee by \_\_\_\_\_  
 Address \_\_\_\_\_  
 Mineral rights are owned by \_\_\_\_\_  
 Address \_\_\_\_\_  
 Drilling commenced Sept. 18, 1925  
 Drilling completed Jan. 8, 1926  
 Date Shot \_\_\_\_\_ From \_\_\_\_\_ To \_\_\_\_\_  
 With \_\_\_\_\_  
 Open Flow \_\_\_\_\_ /10ths Water in \_\_\_\_\_ Inch  
 \_\_\_\_\_ /10ths Merc. in \_\_\_\_\_ Inch  
 Volume \_\_\_\_\_ Cu. Ft.  
 Rock Pressure \_\_\_\_\_ lbs. \_\_\_\_\_ hrs.  
 Oil \_\_\_\_\_ bbls., 1st 24 hrs.  
 Fresh water none recorded feet \_\_\_\_\_ feet  
 Salt water 730-860-950 feet \_\_\_\_\_ feet

Casing and Tubing	Used in Drilling	Left in Well	Packers
Size			
16			Kind of Packer
13			
10	199	199	Size of
8 1/4	997	997	
6 1/2	1397	1397	Depth set
5 3/16	2456	Pulled	
3			Perf. top
2	3081	Pulled	Perf. bottom
Liners Used			Perf. top
			Perf. bottom

Not cemented  
 CASING CEMENTED \_\_\_\_\_ SIZE \_\_\_\_\_ No. Ft. \_\_\_\_\_ Date \_\_\_\_\_  
 Below coal  
 COAL WAS ENCOUNTERED AT \_\_\_\_\_ FEET \_\_\_\_\_ INCHES  
 \_\_\_\_\_ FEET \_\_\_\_\_ INCHES \_\_\_\_\_ FEET \_\_\_\_\_ INCHES  
 \_\_\_\_\_ FEET \_\_\_\_\_ INCHES \_\_\_\_\_ FEET \_\_\_\_\_ INCHES

Formation	Color	Hard or Soft	Top	Bottom	Oil, Gas or Water	Depth Found	Remarks
Little Dunkard			375	395			
Big Dunkard			420	450			
First Salt sand			705	800	water	730	
Second Salt sand			835	994	water	860-950	
Maxon sand			1250	1296			
Big Lime			1340	1440			
Big Injun			1440	1548	gas	1485	
Fifty foot sand			1836	1881	gas	1878	
Thirty Foot sand			1911	2050			
Gordon stray			2150	2180			
Fourth sand			2275	2295			
Fifth sand			2354	2373	gas	2364	
Speechley sand			3050	3061	gas	3053	
Total depth				3081			

Formation	Color	Hard or Soft	Top	Bottom	Oil, Gas or Water	Depth Found	Remarks

Date October 15, 1943., 194

APPROVED Hope Natural Gas Company., Owner

By [Signature] Gen. Sup't.

(Title)