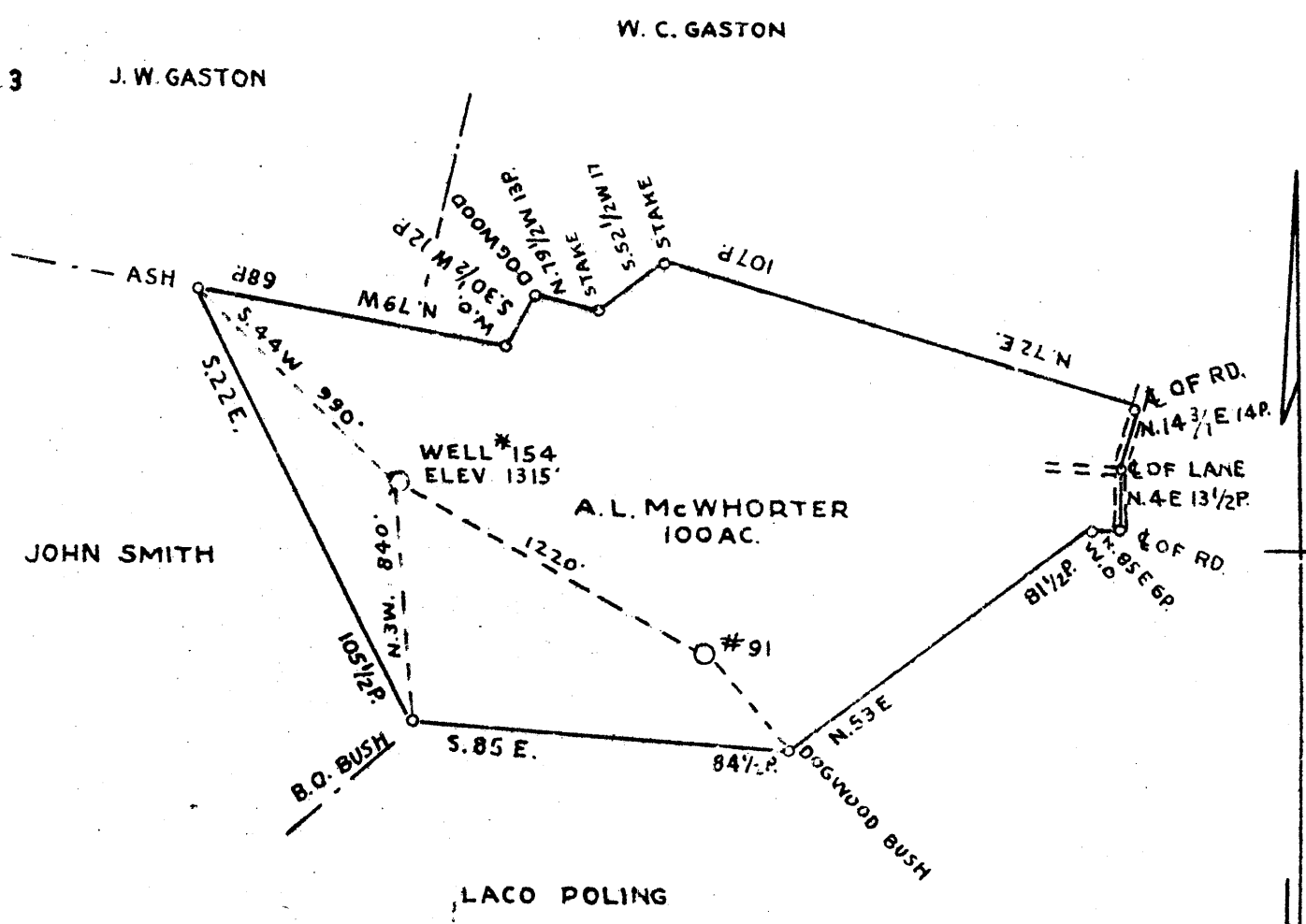


0.91 S
3.79 W

0.90 S
3.79 W



COAL OWNED BY A. L. McWHORTER AND HIRAM E. EDMONDS

0.91 S
3.83 W

- New Location...
- Drill Deeper...
- Abandonment...

Company CUMBERLAND AND ALLEGHENY GAS CO
 Address 800 UNION TRUST BLDG. PITTSBURGH PA.
 Farm A. L. McWHORTER
 Tract _____ Acres 100 Lease No. 235
 Well (Farm) No. 2 Serial No. 154
 Elevation (Spirit Level) 1315'
 Quadrangle WESTON N.W. 1/4
 County HARRISON District GRANT
 Engineer Glenover
 Engineer's Registration No. _____
 File No. R-26-12+13 Drawing No. Y-10-566
 Date MARCH-10-1942 Scale 1" = 660

STATE OF WEST VIRGINIA
 DEPARTMENT OF MINES
 OIL AND GAS DIVISION
 CHARLESTON

WELL LOCATION MAP
 File No. H.A.R. 725-A

— Denotes location of well on United States Topographic Maps, scale 1 to 62,500, latitude and longitude lines being represented by border lines as shown.
 — Denotes one inch spaces on border line of original tracing

STATE OF WEST VIRGINIA
DEPARTMENT OF MINES
OIL AND GAS DIVISION

582

Ab 725-A

WELL RECORD

Oil or Gas Well Gas
(KIND)

Permit No. Drilled in 1916

Company Cumberland and Allegheny Gas Co.
 Address 800 Union Trust Bldg., Pittsburgh, Pa.
 Farm A. L. McWhorter Acres 100
 Location (waters).....
 Well No. 2 - 154 Elev. 1315 ft.
 District Grant County Harrison
 The surface of tract is owned in fee by A. L. McWhorter
R D 1, Lost Creek Address W. Va.
 Mineral rights are owned by Cumberland and Allegheny
Gas Company Address Pittsburgh, Pa.
 Drilling commenced 6/21/16
 Drilling completed 7/10/16
 Date shot No Depth of shot.....
 Open Flow /10ths Water in..... Inch
 /10ths Merc. in..... Inch
 Volume..... Cu. Ft.
 Rock Pressure..... lbs..... hrs.
 Oil..... bbls., 1st 24 hrs.
 Fresh water..... feet..... feet
 Salt water..... feet..... feet

Casing and Tubing	Used in Drilling	Left in Well	Packers
Size			
16			Kind of Packer.....
13			<u>Anchor</u>
10			Size of.....
8 1/4	<u>1005</u>	<u>1005</u>	<u>8 1/4 x 3"</u>
6 3/8			Depth set.....
5 3/16			<u>1126 ft.</u>
3			Perf. top.....
2			Perf. bottom.....
Liners Used.....			Perf. top.....
			Perf. bottom.....

CASING CEMENTED..... SIZE..... No. Ft..... Date.....
 COAL WAS ENCOUNTERED AT 965 FEET 48 INCHES
 FEET..... INCHES..... FEET..... INCHES
 FEET..... INCHES..... FEET..... INCHES

Formation	Color	Hard or Soft	Top	Bottom	Oil, Gas or Water	Depth Found	Remarks
Clay, Slate & Lime			0	200			
Shells			200	210			
Shells & Slate			210	300			
Slate			300	450			
Big Dunkard			450	510			
Slate			510	600			
Gas Sand			600	700			
1st Salt Sand			700	768			
Slate & Shells			768	810			
2nd Salt Sand			810	950			3 bailers water per hour at 890 ft.
Seal			965	969			
3rd Salt Sand			1025	1195			Small amount of water at 1025
Red Rock			1195	1422			Small gas at 1164 ft
Maxon Sand			1422	1446			Gas 1432 to 1445 ft
Total depth				1457			



Formation	Color	Hard or Soft	Top	Bottom	Oil, Gas or Water	Depth Found	Remarks

Date March 11th, 192

APPROVED CUMBERLAND AND ALLEGHENY GAS COMPANY, Owner

By Harry H. Fowler
Land Dept. (Title) Office Manager