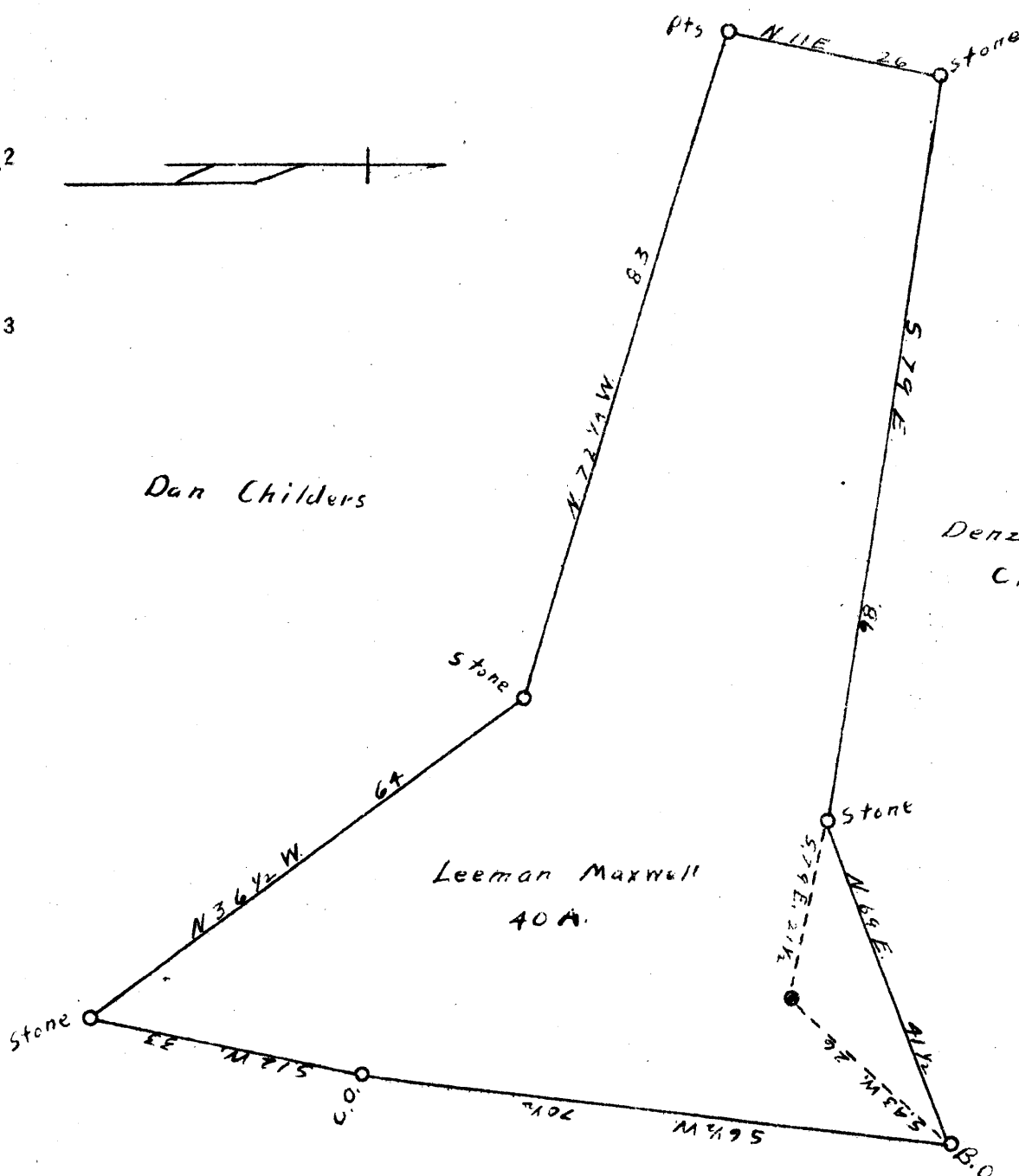
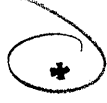


Leeman Maxwell



Dan Childers

Denzil & Hoit Childers

Leeman Maxwell
40 A.

Edward Goldsmith

1.12 S
1.69 W
1.12 S
1.71 W

New Location
Drill Deeper
Abandonment

Company J. R. Thomey
Address 255 E. Main St. Salem, W. Va.
Farm Leeman Maxwell
Tract _____ Acres 40 Lease No. _____
Well (Farm) No. One Serial No. _____
Elevation (Spirit Level) 1417
Quadrangle Vadis
County Harrison District Ten Mile
Engineer A. K. Warfall
Engineer's Registration No. Co. Surveyor, Ritchie Co.
File No. _____ Drawing No. _____
Date Nov. 28, 1941 Scale 1" = 20 Poles

STATE OF WEST VIRGINIA
DEPARTMENT OF MINES
OIL AND GAS DIVISION
CHARLESTON

WELL LOCATION MAP
FILE NO. HAR 712 A

+ Denotes location of well on United States Topographic Maps, scale 1 to 62,500. latitude and longitude lines being represented by border lines as shown.

- Denotes one inch spaces on border line of original tracing.