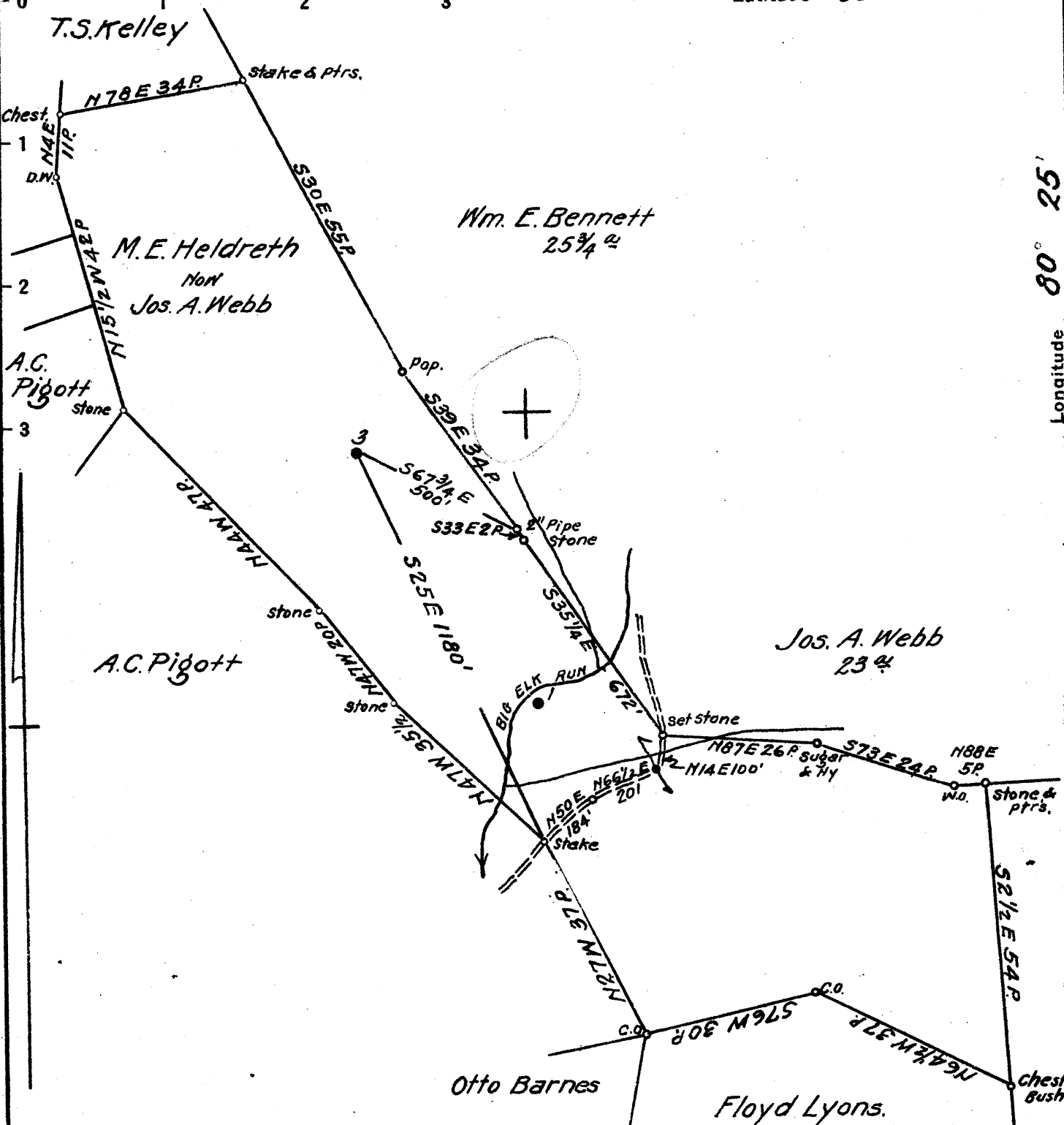


Latitude 39° 30'

Longitude 80° 25'



Coal: State of West Virginia
 Surface: Jos. A. Webb
 Wallace, W. Va.
 R.F.D. #3.

3.06S
 3.80W

3.07S
 3.85W

New Location
 Drill Deeper
 Abandonment

N1S1E8 Map N49

Company South Penn Natural Gas Co.
 Address Parkersburg, W. Va.
 Farm M. E. Heldreth
 Tract _____ Acres 57 Lease No. 32830
 Well (Farm) No. 3 Serial No. _____
 Elevation (Spirit Level) 1201.87
 Quadrangle Clarksburg
 County Harrison District Sardis
 Engineer E.C. Tabler
 Engineer's Registration No. _____
 File No. _____ Drawing No. _____
 Date July 3, 1941 Scale 1" = 400'

STATE OF WEST VIRGINIA
 DEPARTMENT OF MINES
 OIL AND GAS DIVISION
 CHARLESTON

WELL LOCATION MAP
 FILE NO. HAR-690A

+ Denotes location of well on United States Topographic Maps, scale 1 to 62,500, latitude and longitude lines being represented by border lines as shown.

- Denotes one inch spaces on border line of original tracing.