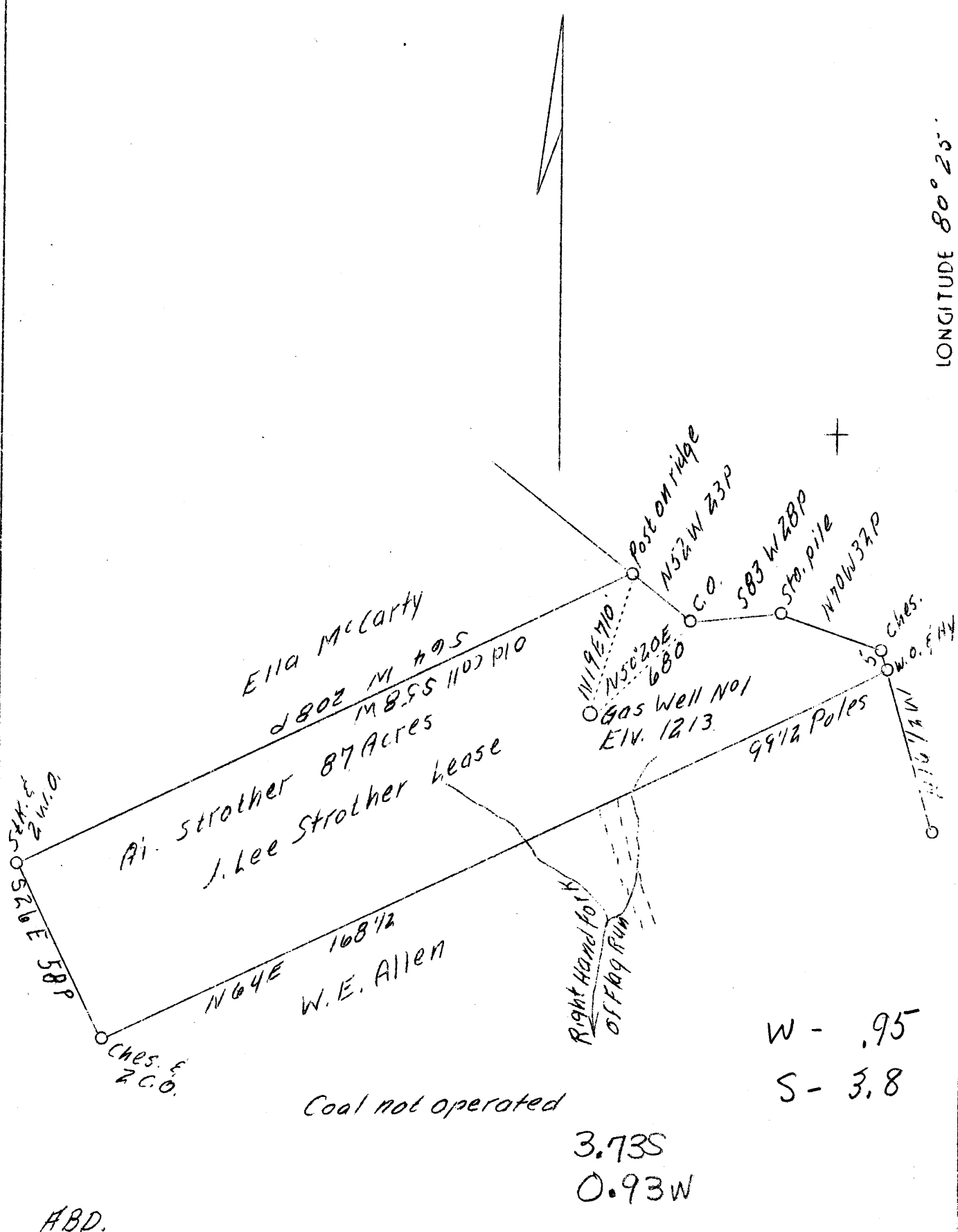


LATITUDE 39° 25'

LONGITUDE 80° 25'



Company	J. M. Raad
Address	Salem, W. Va.
Farm	Ai. Strother
Acres	87
Well (Farm) No.	1
Elevation (SL)	1213
Quadrangle	Clarksburg W.
County	Harrison
District	Sardis
Engineer	C. C. Fittro, C. E.
Eng. Reg. No.	818
File No.	XYZ
Drawing No.	128
Date	Sept. 4, 1939
Scale	40 poles - 1"

STATE OF WEST VIRGINIA  
 Department of Mines  
 OIL & GAS DIVISION  
 Charleston

WELL LOCATION MAP

File No. HOP-524-A

x Denotes location of well on U. S. Topographic Maps, scale 1 to 62,500, latitude and longitude lines being represented by border lines as shown.

- Denotes one inch spaces on border line of original tracing.