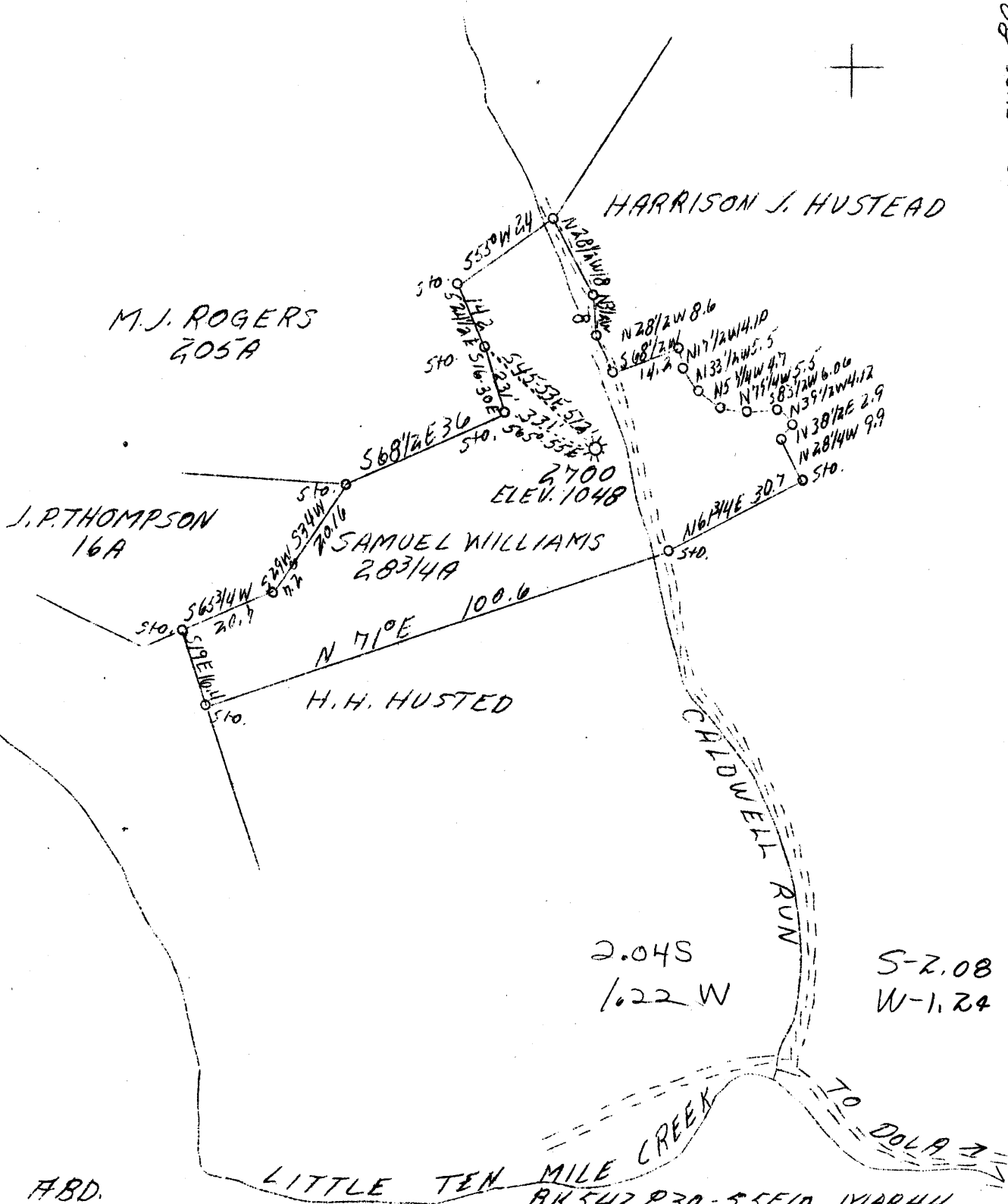


LATITUDE 39° 25'

LONGITUDE 80° 25'



ABD.

LITTLE TEN MILE CREEK
BK 542 P 30-55 E 10 MAR 44

Company	Hope Nat'l Gas Co.
Address	Clarksburg, W.Va.
Farm	Samuel Williams
Tract	1
Acres	28
Lease No.	13447
Serial No.	2700
Well(Farm)No.	1
El.(S.L.)	1048
Quadrangle <i>WC</i>	Clarksburg
County	Harrison
District	Sardis
Eng.	W.M.Bowers
Eng. Reg. No.	900
Date	8/31/39
Scale	1" - 30 POles

STATE OF WEST VIRGINIA
Department of Mines
OIL AND GAS DIVISION
Charleston

WELL LOCATION MAP

File No. HOT-518-A

x Denotes location of well on U.S. Topographic Maps, scale 1 to 62,500, latitude and longitude lines being represented by border lines as shown.

- Denotes one inch spaces on border line of original tracing.

STATE OF WEST VIRGINIA
DEPARTMENT OF MINES
OIL AND GAS DIVISION

441

AD 518-A

WELL RECORD

Oil or Gas Well Gas
(Kind)

Company Hope Natural Gas Company
Address Clarksburg, W. Va.
Farm Samuel Williams Acres 28
Location (waters) Caldwell Run
Well No. 2700 Elev. 1048
District Sardis County Harrison
The surface of tract is owned in fee by Samuel Williams Hrs.
Address Brown, W. Va.
Mineral rights are owned by ?
Address _____
Drilling commenced 10-28-1912
Drilling completed 12-7-1912
Date shot 12-6-1912 Depth of shot 2362-2382
Open Flow /10ths Water in _____ Inch
/10ths Merc. in _____ Inch
Volume _____ Cu. Ft.
Rock Pressure _____ lbs. _____ hrs.
Oil _____ bbls., 1st 24 hrs.
Fresh water None recorded feet _____ feet
Salt water 795 feet _____ feet

Casing and Tubing	Used in Drilling	Left in Well	Packers
Size			
16			Kind of Packer
13			
10	288	288	Size of
8 1/4	1304	1304	
6 5/8	1610	1610	Depth set
5 3/16			
3			Perf. top
2	2392	Pulled	Perf. bottom
Liners Used			Perf. top
			Perf. bottom

CASING CEMENTED 10" SIZE 288' No. FT10-29-12 Date
10" casing set at 288 & cemented through coal.
COAL WAS ENCOUNTERED AT 245 FEET 84 INCHES
FEET INCHES FEET INCHES
FEET INCHES FEET INCHES

Formation	Color	Hard or Soft	Top	Bottom	Oil Gas or Water	Depth Found	Remarks
Pittsburgh Coal			245	252			
Little Dunkard Sand			620	660			
Big Dunkard Sand			770	845	Water	795	
Gas Sand			1010	1030			
First Salt Sand			1090	1150			
Second Salt Sand			1190	1250			
Maxon Sand			1460	1540	Small Gas	1470	
Big Lime			1540	1608			
Big Injun Sand			1608	1700	Gas	1660	
Squaw Sand			1740	1750			
Fifty Foot Sand			2175	2205			
Thirty Foot Sand			2260	2280	Gas	2265	
Gordon Stray Sand			2360	2412	Gas	2373	
Gordon Sand			2417	2453	Gas	2432	
Fourth Sand			2489	2498			
Total Depth			2700				

