

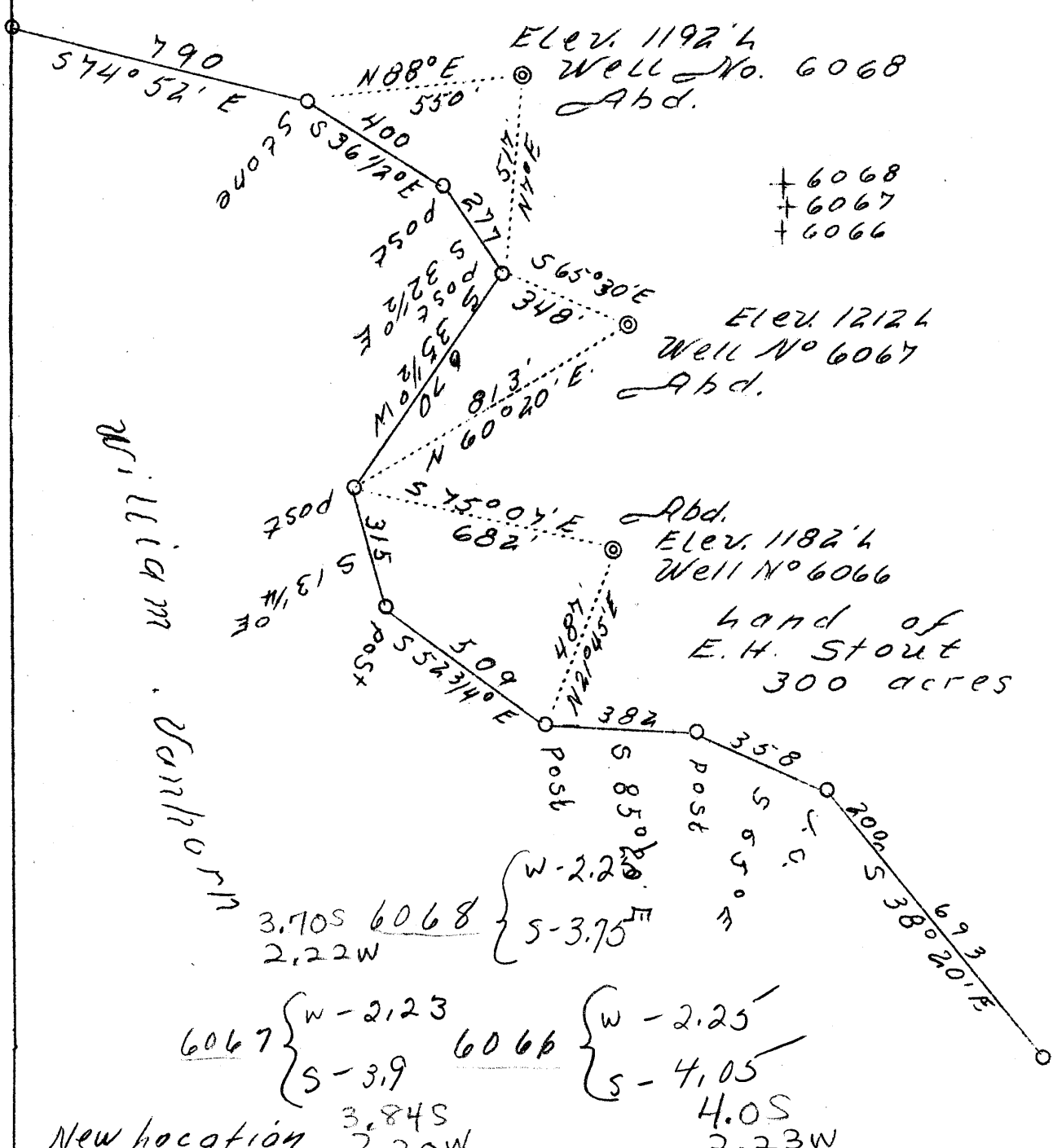
Latitude 39° 15'

FORK

RIVER

WEST

Longitude 80° 20'



Company H. E. Milliken & A. M. 5257
 Address Waynesburg, Pa.
 Farm E. H. Stout
 Tract 1
 Acres 300
 Well No. (Farm) 6068, 6067 and 6066
 Elevation -
 Quadrangle Weston N.C.
 District Grant
 County Harrison
 Engineer David Weed
 Eng. Reg. No. 233-16-5767
 Date August 14, 1939
 Scale 1" = 400'

STATE OF WEST VIRGINIA
 Department of Mines
 OIL & GAS DIVISION
 Charleston

WELL LOCATION MAP

File No. HOR-512-13-574

Abandoned

6068

6067

6066

Grant District, Harrison County, W. Va.

By Milliken & Snider, Waynesburg, Pa.

Abandoned under permit Har.....-A.

On 300 acres, on West Fork River.

Elevation, 1182' L.

Surface owned by Edward Stout, Clarksburg, W. Va.

Drilling completed Sept. 26, 1917.

Shot in Gordon Sand.

No water recorded.

10" casing, 282' (pulled); 8 $\frac{1}{4}$ " , 1050'; 6 $\frac{5}{8}$ " , 2070'; 2" tubing, 2335'.

Casing not cemented. Starts below coal.

Oil well. Abandonment reported to Dept. of Mines August 18, 1939.

Record to RCT from Mrs. Griffith August 24, 1939.

	Top.	Bottom.
Little Dunkard Sand	420	- 460
Big Dunkard Sand	510	- 565
Gas Sand	600	- 635
First Salt Sand	815	- 880
Second Salt Sand	910	- 1040
Maxton Sand	1160	- 1185
Little Lime	1450	- 1465
Pencil Cave	1465	- 1480
Big Lime	1480	- 1545
Big Injun Sand (gas, 1625')	1545	- 1701
Gantz Sand (gas, 1965')	1918	- 1982
Fifty-foot Sand	1997	- 2045
Thirty-foot Sand	2050	- 2173
Gordon Stony Sand	2285	- 2305
Gordon Sand (oil, 2317-2323')	2313	- 2335
Total depth		2335

514A

STATE OF WEST VIRGINIA
DEPARTMENT OF MINES
OIL AND GAS DIVISION

414

WELL RECORD

Permit No. HAR-514-A

Oil or Gas Well Oil
(Kind)

Company Milliken & Snider
Address Waynesburg, Pa.
Farm E. H. Stout Acres 300
Location (waters) West Fork River
Well No. 6066 Elev. 1182
District Grant County Harrison
The surface of tract is owned in fee by Edward Stout
Address Clarksburg, W. Va.
Mineral rights are owned by _____
Address _____
Drilling commenced _____
Drilling completed 9-26-1917
Date shot ? Depth of shot In Gordon
Open Flow /10ths Water in _____ Inch
/10ths Merc. in _____ Inch
Volume _____ Cu. Ft.
Rock Pressure _____ lbs. _____ hrs.
Oil _____ bbls., 1st 24 hrs.
Fresh water None recorded feet _____ feet
Salt water None recorded feet _____ feet

Casing and Tubing	Used in Drilling	Left in Well	Packers
Size			
16			Kind of Packer
13			
10	282	Pulled	Size of
8 1/4	1050	1050	
6 5/8	2070	2070	Depth set
5 3/16			
3			Perf. top
2	2335	2335	Perf. bottom
Liners Used			Perf. top
			Perf. bottom

CASING CEMENTED _____ SIZE _____ No. FT. _____ Date _____
Not cemented
COAL WAS ENCOUNTERED AT _____ FEET _____ INCHES
_____ FEET _____ INCHES
_____ FEET _____ INCHES

Formation	Color	Hard or Soft	Top	Bottom	Oil Gas or Water	Depth Found	Remarks
Little Dunkard Sand			420	460			
Big Dunkard Sand			510	565			
Gas Sand			600	635			
First Salt Sand			815	890			
Second Salt Sand			910	1040			
Maxon Sand			1160	1185			
Little Lime			1450	1465			
Pencil Cave			1465	1480			
Big Lime			1480	1545			
Big Injun Sand			1545	1701	Gas	1625	
Gentz Sand			1918	1982	Gas	1965	
Fifty Foot Sand			1997	2045			
Thirty Foot Sand			2050	2173			
Gordon Stray Sand			2285	2305			
Gordon Sand			2313	2335	Oil	2317-2323	
Total Depth				2335			

