



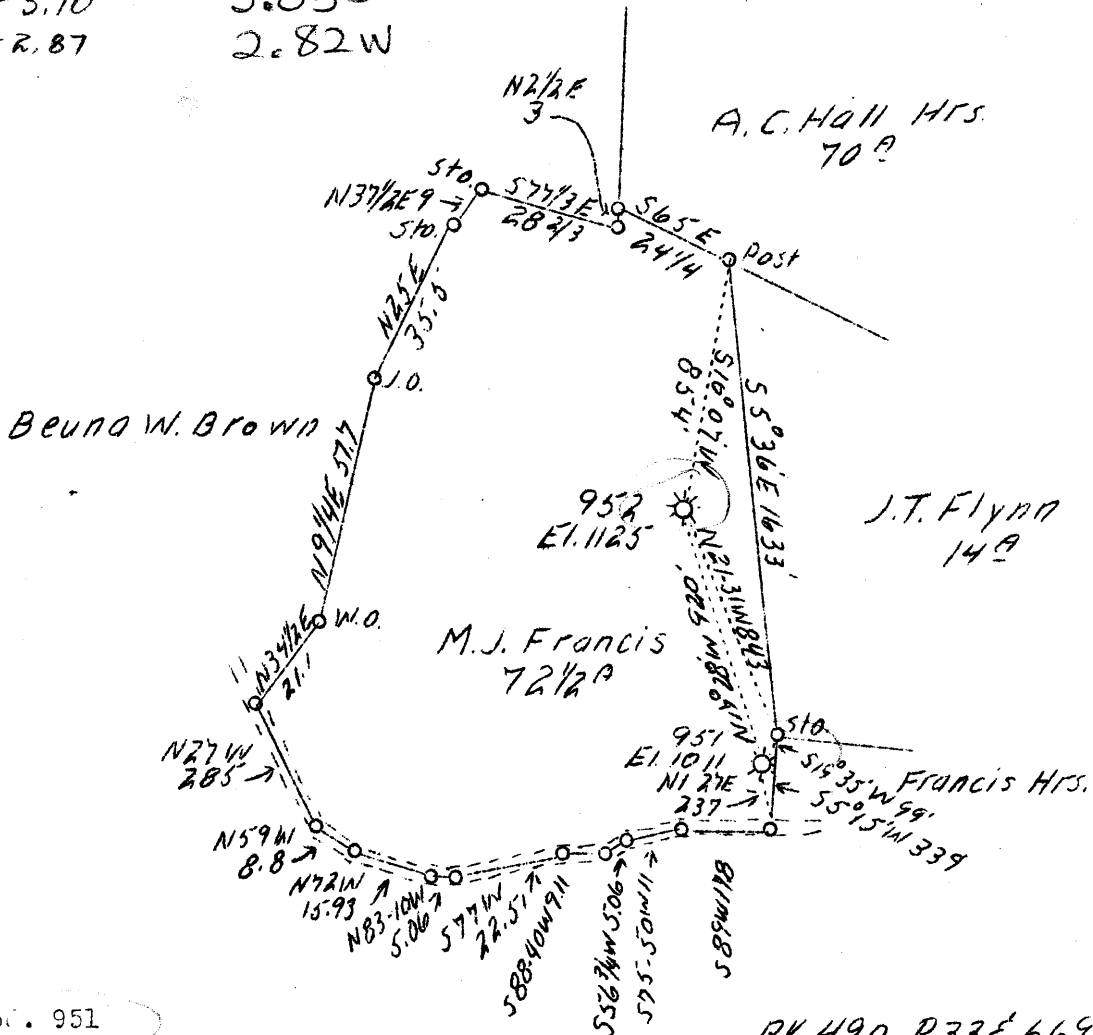
952

S-2.96
W-2.93

951

S-3.10
W-2.87

3.05S
2.82W



Abt. 951

BK 490 P33 & 669 P 34

| | |
|-----------------|--------------------|
| Company | Reserve Gas Co. |
| Address | Clarksburg, W. Va. |
| Farm | M. J. Francis |
| Acres | 72-1/2 |
| Lease No. | 2233 |
| Well (Farm) No. | 1 & 2 |
| Serial No. | 951 and 952 |
| Elevation (SL) | 951-1011 952-1125 |
| Quadrangle | SC Clarksburg |
| County | Harrison |
| District | Coal |
| Engineer | W. M. Bowers |
| Eng. Reg. No. | 900 |
| Date | August 1, 1939 |
| Scale | 1" - 40 poles |

STATE OF WEST VIRGINIA
Department of Mines
OIL & GAS DIVISION
Charleston

WELL LOCATION MAP

File No. Har-508

x Denotes location of well on U. S. Topographic Maps, scale 1 to 62,500, latitude and longitude lines being represented by border lines as shown.

- Denotes one inch spaces on border line of original tracing.

STATE OF WEST VIRGINIA
DEPARTMENT OF MINES
OIL AND GAS DIVISION

403

WELL RECORD

Permit No. 508-A
Clarksburg, W. Va.

Oil or Gas Well Gas
(Kind)

Company Reserve Gas Company
Address Clarksburg, W. Va.
Farm M. J. Francis Acres 72 1/2
Location (waters) _____
Well No. 951 Elev. 1011
District Coal County Harrison
The surface of tract is owned in fee by _____
Address _____
Mineral rights are owned by _____
Address _____
Drilling commenced Jan. 20, 1908
Drilling completed Apr. 6, 1908
Date shot No record Depth of shot Speechley
Open Flow /10ths Water in _____ Inch
/10ths Merc. in _____ Inch
Volume _____ Cu. Ft.
Rock Pressure _____ lbs. _____ hrs.
Oil _____ bbls., 1st 24 hrs.
Fresh water None recorded feet _____ feet
Salt water 825 feet _____ feet

| Casing and Tubing | Used in Drilling | Left in Well | Packers |
|-------------------|------------------|--------------|----------------|
| Size | | | |
| 16 | | | Kind of Packer |
| 13 | | | |
| 10 | 300 | 300 | Size of |
| 8 1/4 | 1009 | 1009 | |
| 6 5/8 | 1455 | 1455 | Depth set |
| 5 3/16 | | | |
| 3 | 2985 | 2985 | Perf. top |
| 2 | | | Perf. bottom |
| Liners Used | | | Perf. top |
| | | | Perf. bottom |

CASING CEMENTED _____ SIZE _____ No. FT. _____ Date _____
Not cemented
COAL WAS ENCOUNTERED AT 300 FEET 36 INCHES
_____ FEET _____ INCHES _____ FEET _____ INCHES
_____ FEET _____ INCHES _____ FEET _____ INCHES

| Formation | Color | Hard or Soft | Top | Bottom | Oil Gas or Water | Depth Found | Remarks |
|-----------------------|-------|--------------|------|--------|------------------|-------------|---------|
| ##### Coal | | | 300 | 303 | | | |
| Little Dunkard Sand | | | 315 | 335 | | | |
| Big Dunkard Sand | | | 404 | 468 | | | |
| Salt Sand | | | 745 | 1000 | Water | 825 | |
| Big Lime | | | 1295 | 1355 | | | |
| Big Injun Sand | | | 1355 | 1445 | | | |
| Fifty Foot Sand | | | 1883 | 1896 | | | |
| Gordon Sand | | | 1953 | 1968 | | | |
| Fifth Sand | | | 2270 | 2287 | Gas | 2271-2278 | |
| Speechley Sand | | | 2961 | 2980 | Gas | 2964 | |
| Total Depth | | | 2987 | | | | |

