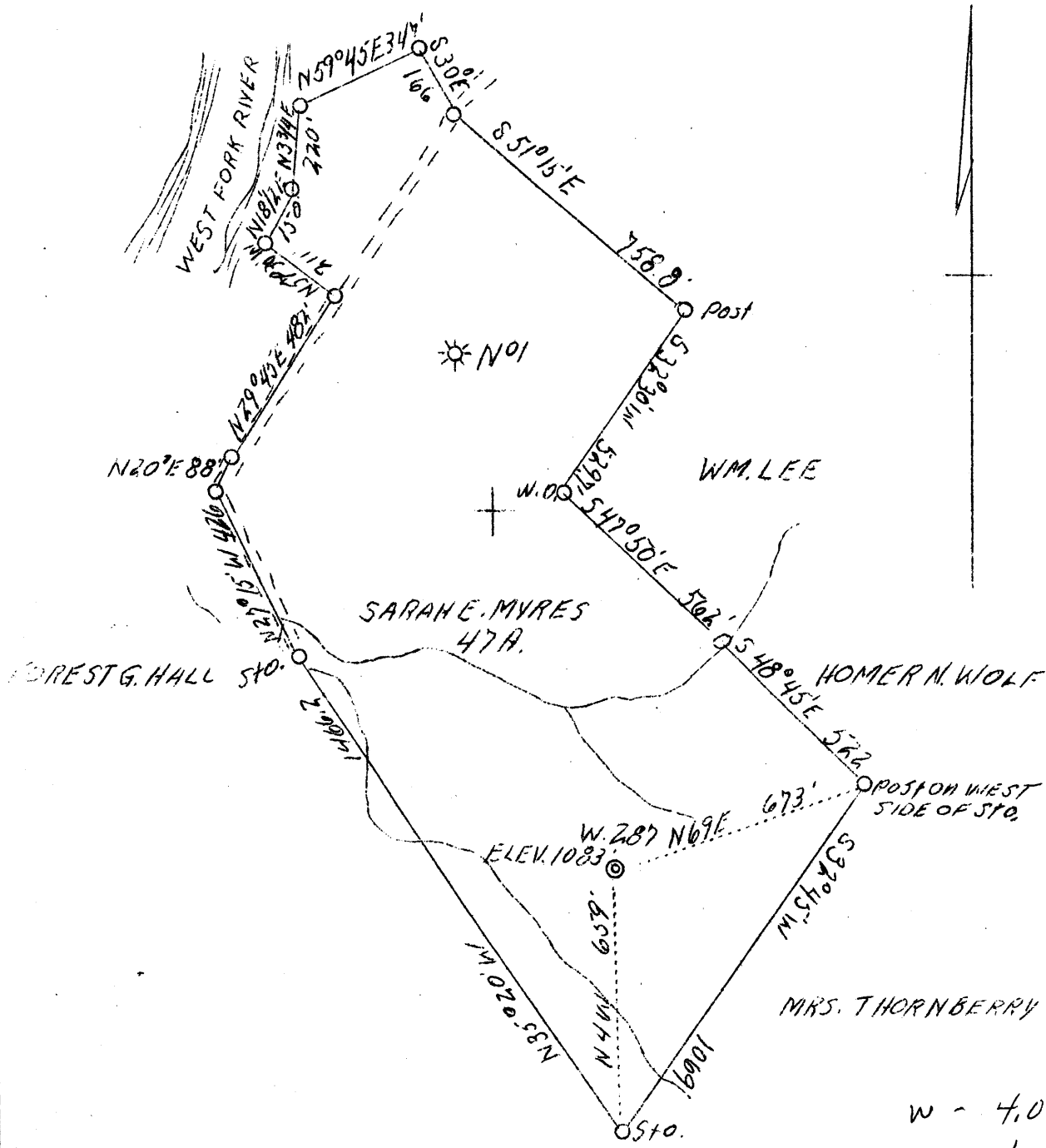


LATITUDE 39° 15'

LONGITUDE 80° 20'



W - 4.02  
S. 4.19

H.12 S  
3.96 W

Coal owned by HARRY MYERS, ET AL  
R. 1 D. 1 CLARKSBURG, W. VA.

ABD.

Company Cumberland & Allegheny Gas Co.  
Address 800 Union Trust Bldg.  
Pittsburgh, Pa.  
Farm Sarah E. Myers Estate  
Acres 47  
Lease No. 5595  
Serial No. 287  
Well (Farm) No. 2  
El. (S.L.) 1083  
Quadrangle Weston N1C  
County Harrison  
District Grant  
Eng. J.C. Mercer  
Drawing No. Y - 8 - 418  
Date 7/26/39  
Scale 1" = 400'

STATE OF WEST VIRGINIA  
Department of Mines  
OIL AND GAS DIVISION  
Charleston

WELL LOCATION MAP

File No. H01-507-A

x Denotes location of well on U.S. Topographic Maps, scale 1 to 62,500, latitude and longitude lines being represented by border lines as shown.

- Denotes one inch spaces on border line of original tracing.

about - Har - 507-A -  
Winston N.C.

WEST VIRGINIA DEPARTMENT OF MINES  
OIL AND GAS DIVISION

408

WELL RECORD

Permit No. Purchased from Oakland O&G Co.

Oil or Gas Well Gas  
(Kind)

Company Cumberland and Allegheny Gas Co.  
 Address 800 Union Trust Bldg., Pittsburgh, Pa.  
 Farm Sarah E. Myers Acres 48  
 Location (waters) \_\_\_\_\_  
 Well No. 2 - 287 Elev. 1083'  
 District Grant County Harrison  
 The surface of tract is owned in fee by Abraham & Sarah Myers Estate Address Clarksburg, WVa.  
 Mineral rights are owned by Cumberland and Allegheny Gas Company Address Pittsburgh, Pa.  
 Drilling commenced April 29, 1924  
 Drilling completed June 13, 1924  
 Date shot June 16, 1924 Depth of shot 2956-2964  
 Open Flow /10ths Water in \_\_\_\_\_ Inch  
 /10ths Merc. in No open flow Inch  
 Volume \_\_\_\_\_ Cu. Ft.  
 Rock Pressure \_\_\_\_\_ lbs. \_\_\_\_\_ hrs.  
 Oil \_\_\_\_\_ bbls., 1st 24 hrs.  
 Fresh water \_\_\_\_\_ feet \_\_\_\_\_ feet  
 Salt water \_\_\_\_\_ feet \_\_\_\_\_ feet

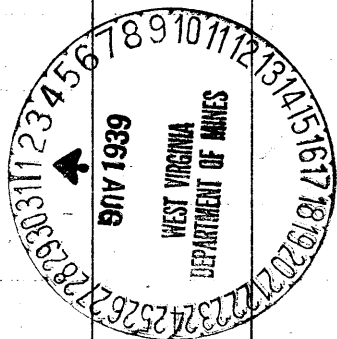
Casing and Tubing	Used in Drilling	Left in Well	Packers
Size			
16.			Kind of Packer.
13.			
10.	185		Size of
8 1/4	800		
6 5/8	1105		Depth set <u>2775</u>
5 3/16			
3.			Perf. top <u>2956</u>
2.	2985		Perf. bottom <u>2964</u>
Liners Used.			Perf. top _____
			Perf. bottom _____

CASING CEMENTED \_\_\_\_\_ SIZE \_\_\_\_\_ No. FT. \_\_\_\_\_ Date \_\_\_\_\_  
 COAL WAS ENCOUNTERED AT 0 FEET \_\_\_\_\_ INCHES  
 \_\_\_\_\_ FEET \_\_\_\_\_ INCHES FEET \_\_\_\_\_ INCHES  
 \_\_\_\_\_ FEET \_\_\_\_\_ INCHES FEET \_\_\_\_\_ INCHES

Formation	Color	Hard or Soft	Top	Bottom	Oil Gas or Water	Depth Found	Remarks
Big Injun			1100	1527			
Berea			1695	1745			
30-Foot			1970	1985			
Gordon			2110	2125			
Fifth - Gas			2245	2250			
Bayard			-	-			
Spechley - Gas			2956	2965			
Total depth				2985			

NOV 24 1924

Formation	Color	Hard or Soft	Top	Bottom	Oil, Gas or Water	Depth Found	Remarks



Date **July 31st,** 19 **39**

APPROVED **THE MANUFACTURERS LIGHT & HEAT CO**, Owner

By *Harry H. Fowler*  
 Land Dept. (Title) Office Manager.