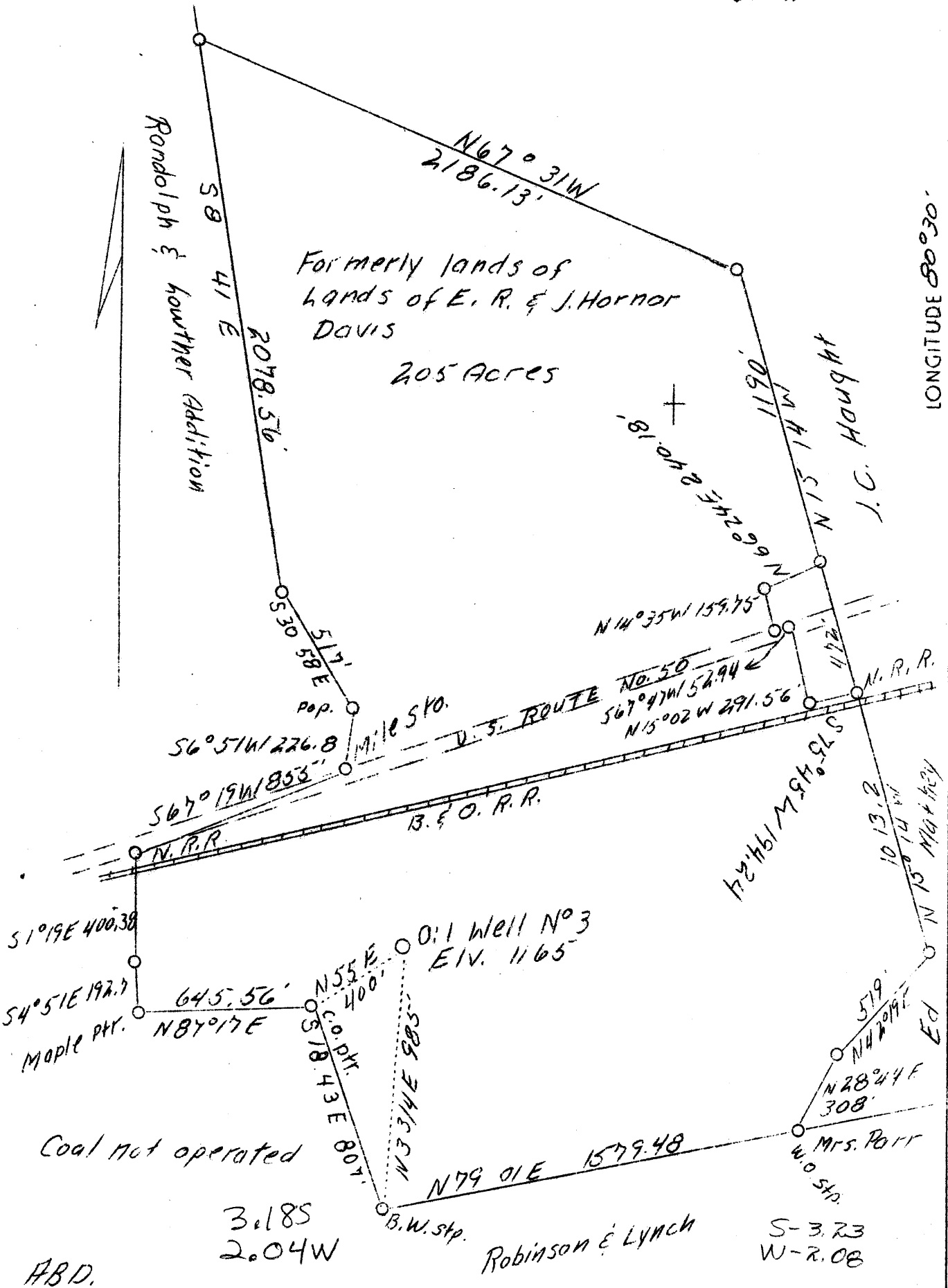


LATITUDE 39° 20'

LONGITUDE 80° 30'



Company J. M. Raad 5708
 Address Salem, W. Va.
 Farm Formerly E.R. & J.H. Davis
 Acres 205 Meredith Hqs.
 Well (Farm) No. 3
 Elevation (SL) 1165
 Quadrangle SE Centerpoint
 County Harrison
 District Tenmile
 Engineer C. C. Fittro, C. E.
 Engineer's Reg. No. 818
 File No. xyz
 Drawing No. 117
 Date July 7, 1939
 Scale 500' - 1"

STATE OF WEST VIRGINIA
 Department of Mines
 OIL & GAS DIVISION
 Charleston

WELL LOCATION MAP

File No. HOK-503-A

x Denotes location of well on U. S. Topographic Maps, scale 1 to 62,500, latitude and longitude lines being represented by border lines as shown.

- Denotes one inch spaces on border line of original tracing.