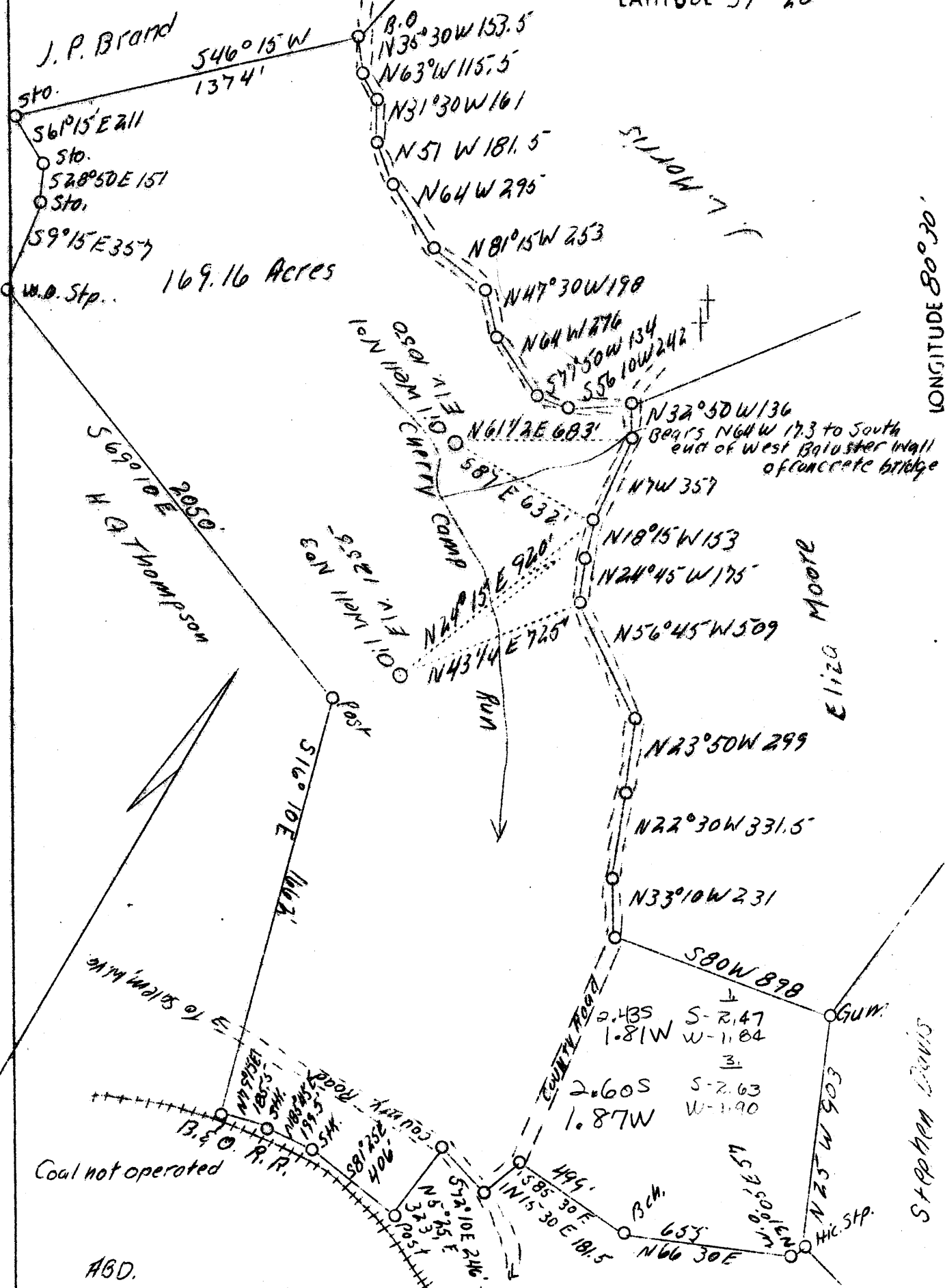


LATITUDE 39° 20'

LONGITUDE 80° 30'



Company J. M. Raad  
 Address Salem, W. Va.  
 Farm J. C. Haught  
 Acres 169.16  
 Well (Farm) No. 1 and 3  
 Elevation (SL) 1050 and 1255  
 Quadrangle SE Centerpoint  
 County Harrison  
 District Tenmile  
 Engineer C. C. Fittro, C. E.  
 Eng. Reg. No. 818  
 File No. xyz  
 Drawing No. 116  
 Date July 4, 1939  
 Scale 500' - 1"

STATE OF WEST VIRGINIA  
 Department of Mines  
 OIL & GAS DIVISION  
 Charleston

WELL LOCATION MAP  
 File No. HAR-5014-502-17

x Denotes location of well on U. S. Topographic Maps, scale 1 to 62,500, latitude and longitude lines being represented by border lines as shown.

- Denotes one inch spaces on border line of original tracing.

ABD.

To Bristol