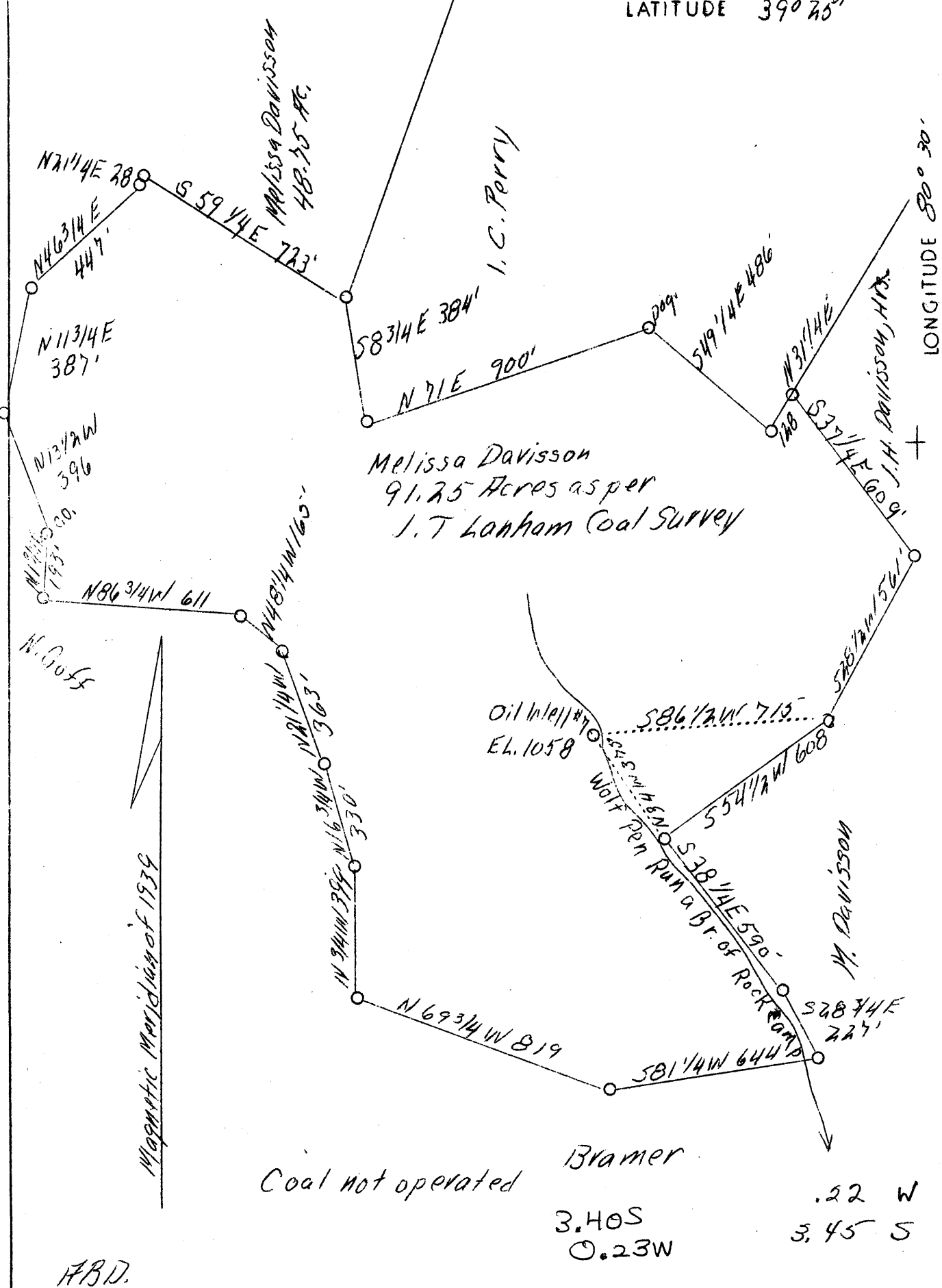


LATITUDE 39° 25'

LONGITUDE 80° 30'



Company Wm. Moses 5260
 Address Salem, W.Va.
 Farm Melissa Davison
 Acres 91.25
 Well (Farm) No. 7
 El. (S.L.) 1058
 Quadrangle Centerpoint EC.
 County Harrison
 District Sardis
 Eng. C.C. Fittro, C.E.
 Eng. Reg. No. 818
 File No. xyz
 Drawing No. 114
 Date 5/11/39
 Scale 1" - 400'

STATE OF WEST VIRGINIA
 Department of Mines
 OIL AND GAS DIVISION
 Charleston

WELL LOCATION MAP

File No. HAY-487-17

x Denotes location of well on U.S. Topographic Maps, scale 1 to 62,500, latitude and longitude lines being represented by border lines as shown.

- Denotes one inch spaces on border line of original tracing.

ABD.