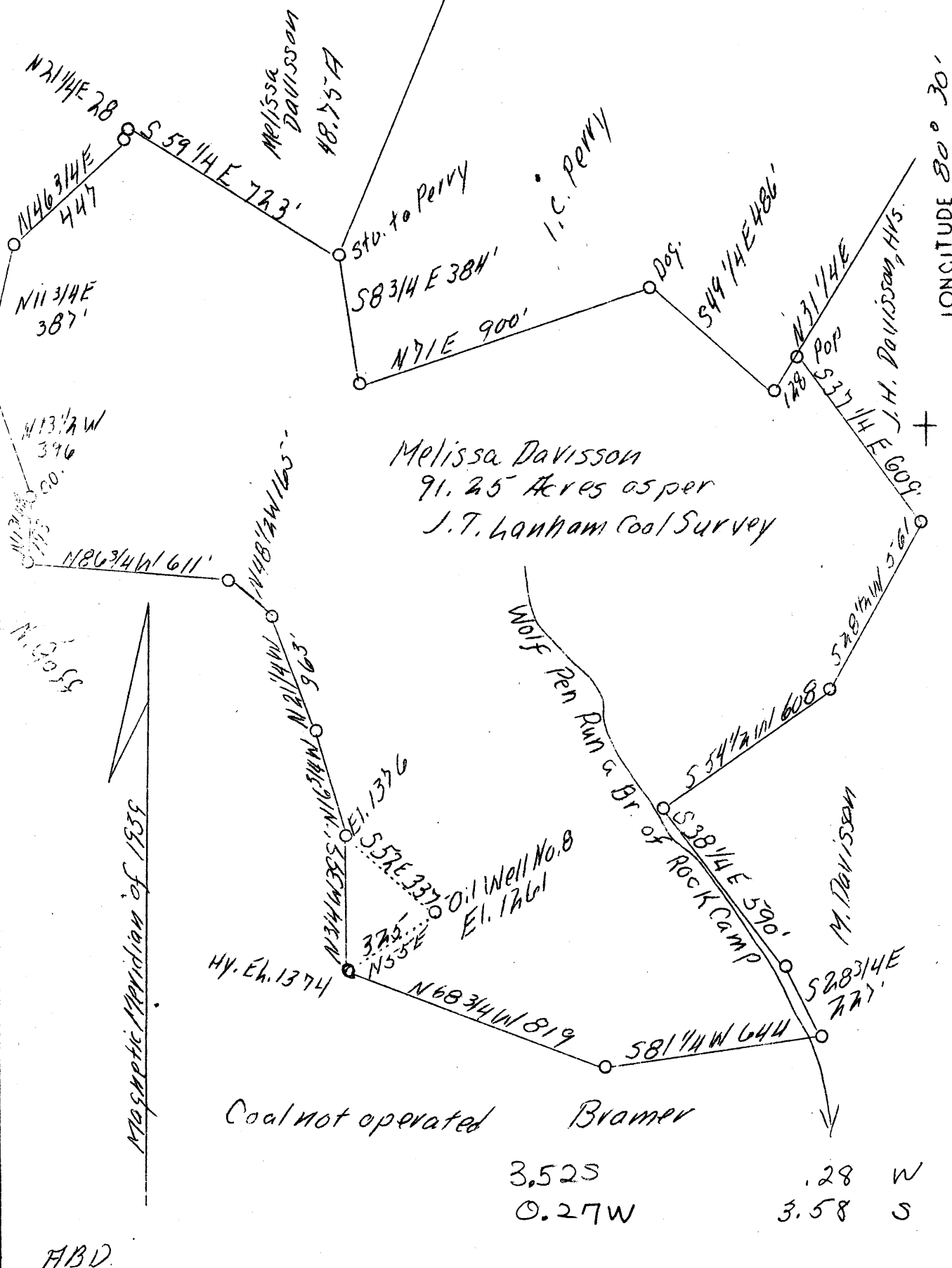


LATITUDE 39° 25'

LONGITUDE 80° 30'



Melissa Davissón
 91.25 Acres as per
 J.T. Lanham Coal Survey

Coal not operated Bramer

3.525 .28 W
 0.27W 3.58 S

FBD

Company Wm. Moses 5260
 Address Salem, W.Va.
 Farm Melissa Davissón
 Acres 91.25
 Well(Farm)No. 8
 El.(S.L.) 1261
 Quadrangle Centerpoint E
 County Harrison
 District Sardis
 Eng. C.C.Fittro, C.E.
 Eng. Reg. No. 818
 File No. xyz
 Drawing No. 113
 Date 5/11/39
 Scale 1" - 400'

STATE OF WEST VIRGINIA
 Department of Mines
 OIL AND GAS DIVISION
 Charleston

WELL LOCATION MAP

File No. Har-486-A

x Denotes location of well on U.S. Topographic Maps, scale 1 to 62,500, latitude and longitude lines being represented by border lines as shown.

- Denotes one inch spaces on border line of original tracing.