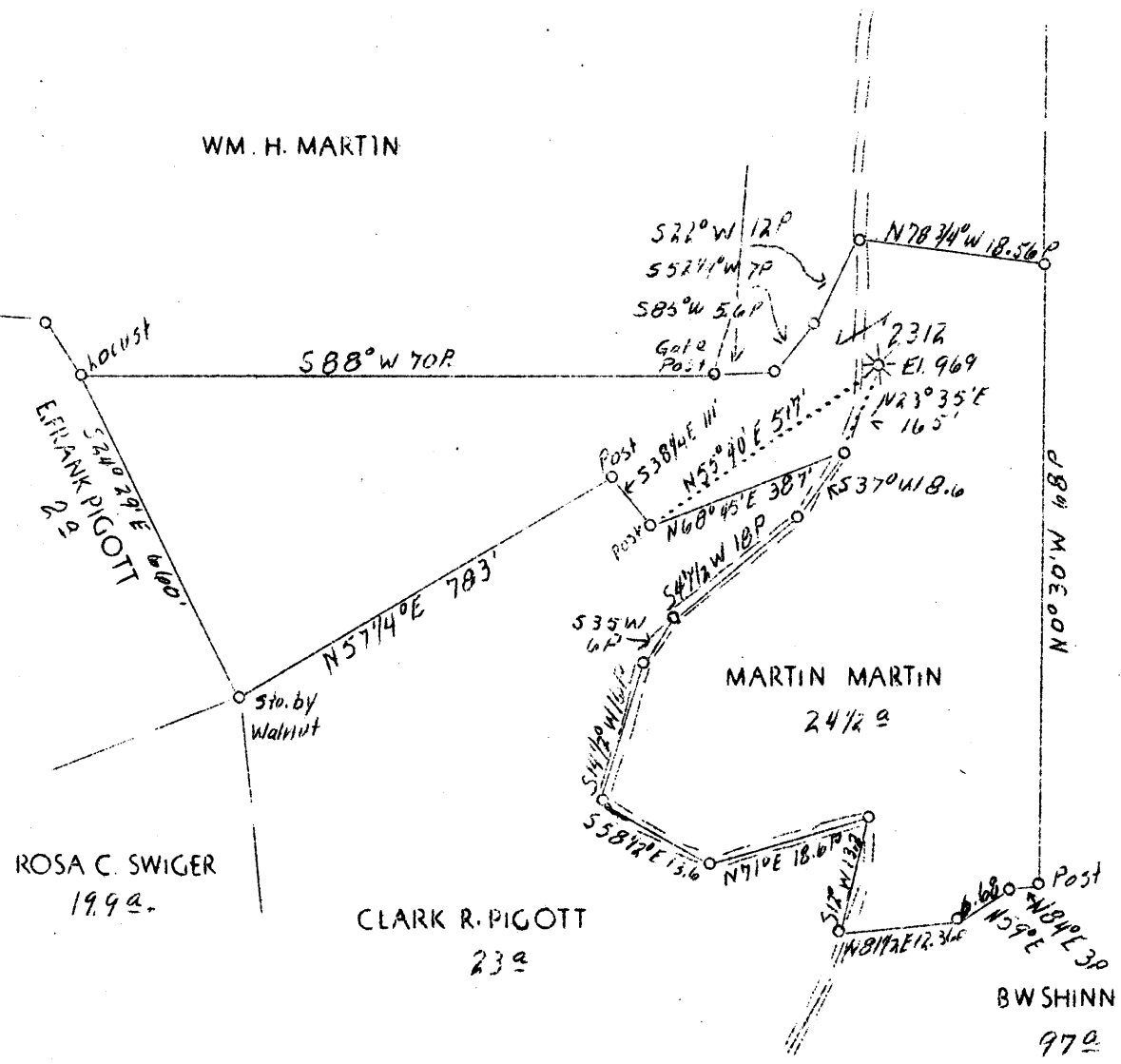


LATITUDE 39° 25'

LONGITUDE 80° 15'

WM. H. MARTIN



0.165  
4.40W  
4.45 W  
115 S

ABD.

F.B. 540 P.25 S3 E16 SW.41

Company	Hope Natural Gas Co.
Address	Clarksburg, W. Va.
Farm	Martin Martin
Acres	53
Lease No.	23837
Well (Farm) No.	One
Serial No.	2312
Elevation (SL)	969
Quadrangle	Clarksburg
County	Harrison
District	Eagle
Engineer	W. M. Bowers
Eng. Reg. No.	900
Date	March 7, 1939
Scale	1" - 20 poles

STATE OF WEST VIRGINIA  
Department of Mines  
OIL & GAS DIVISION  
Charleston

WELL LOCATION MAP

File No. Har-469-A

x Denotes location of well on U. S. Topographic Maps, scale 1 to 62,500, latitude and longitude lines being represented by border lines as shown.

- Denotes one inch spaces on border line of original tracing.

WEST VIRGINIA DEPARTMENT OF MINES  
OIL AND GAS DIVISION

392

WELL RECORD

AD  
Permit No. 469-A

Oil or Gas Well **Gas**  
(Kind)

Company **Hope Natural Gas Company**  
Address **Clarksburg, W. Va.**  
Farm **Martin Martin** Acres **53**  
Location (waters) **Bingamon Creek**  
Well No. **2312** Elev. **969**  
District **Eagle** County **Harrison**  
The surface of tract is owned in fee by **Tony Salerno**  
Address **Pine Bluff, W. Va.**  
Mineral rights are owned by \_\_\_\_\_  
Address \_\_\_\_\_  
Drilling commenced **9-15-1911**  
Drilling completed **11-4-1911**  
Date shot **11-11-1911** Depth of shot **4th & 5th**  
Open Flow /10ths Water in \_\_\_\_\_ Inch  
/10ths Merc. in \_\_\_\_\_ Inch  
Volume \_\_\_\_\_ Cu. Ft.  
Rock Pressure \_\_\_\_\_ lbs. \_\_\_\_\_ hrs.  
Oil \_\_\_\_\_ bbls., 1st 24 hrs.  
Fresh water **780** feet \_\_\_\_\_ feet  
Salt water **None recorded** feet \_\_\_\_\_ feet

Casing and Tubing	Used in Drilling	Left in Well	Packers
Size			
16			Kind of Packer
13			
10	<b>112</b>	<b>Pulled</b>	Size of
8 1/4	<b>1017</b>	<b>Pulled</b>	
6 5/8	<b>1390</b>	<b>1390</b>	Depth set
5 3/16	<b>2051</b>	<b>2051</b>	
3			Perf. top
2	<b>2420</b>	<b>2420</b>	Perf. bottom
Liners Used			Perf. top
			Perf. bottom

CASING CEMENTED \_\_\_\_\_ SIZE \_\_\_\_\_ No. FT. \_\_\_\_\_ Date \_\_\_\_\_  
**Not cemented**  
COAL WAS ENCOUNTERED AT \_\_\_\_\_ FEET \_\_\_\_\_ INCHES  
**No coal**  
\_\_\_\_\_ FEET \_\_\_\_\_ INCHES \_\_\_\_\_ FEET \_\_\_\_\_ INCHES  
\_\_\_\_\_ FEET \_\_\_\_\_ INCHES \_\_\_\_\_ FEET \_\_\_\_\_ INCHES

Formation	Color	Hard or Soft	Top	Bottom	Oil Gas or Water	Depth Found	Remarks
Little Dunkard Sand			470	510			
Big Dunkard Sand			525	580			
Gas Sand			775	790	<b>Water</b>	<b>780</b>	<b>Fresh</b>
First Salt Sand			800	845			
Second Salt Sand			935	1000			
Maxon Sand			1250	1275			
Little Lime			1310	1320			
Pencil Cave			1320	1325			
Big Lime			1325	1379			
Big Injun Sand			1379	1509			
Fifty Foot Sand			1919	1954			
Thirty Foot Sand			2007	2022			
Gordon Stray Sand			2030	2055			
Gordon Sand			2061	2100	<b>Gas</b>	<b>2085</b>	
Fourth Sand			2296	2313	<b>Gas</b>	<b>2296</b>	
Fifth Sand			2380	2383	<b>Gas</b>	<b>2382</b>	
<b>Total Depth</b>				<b>2408</b>			

