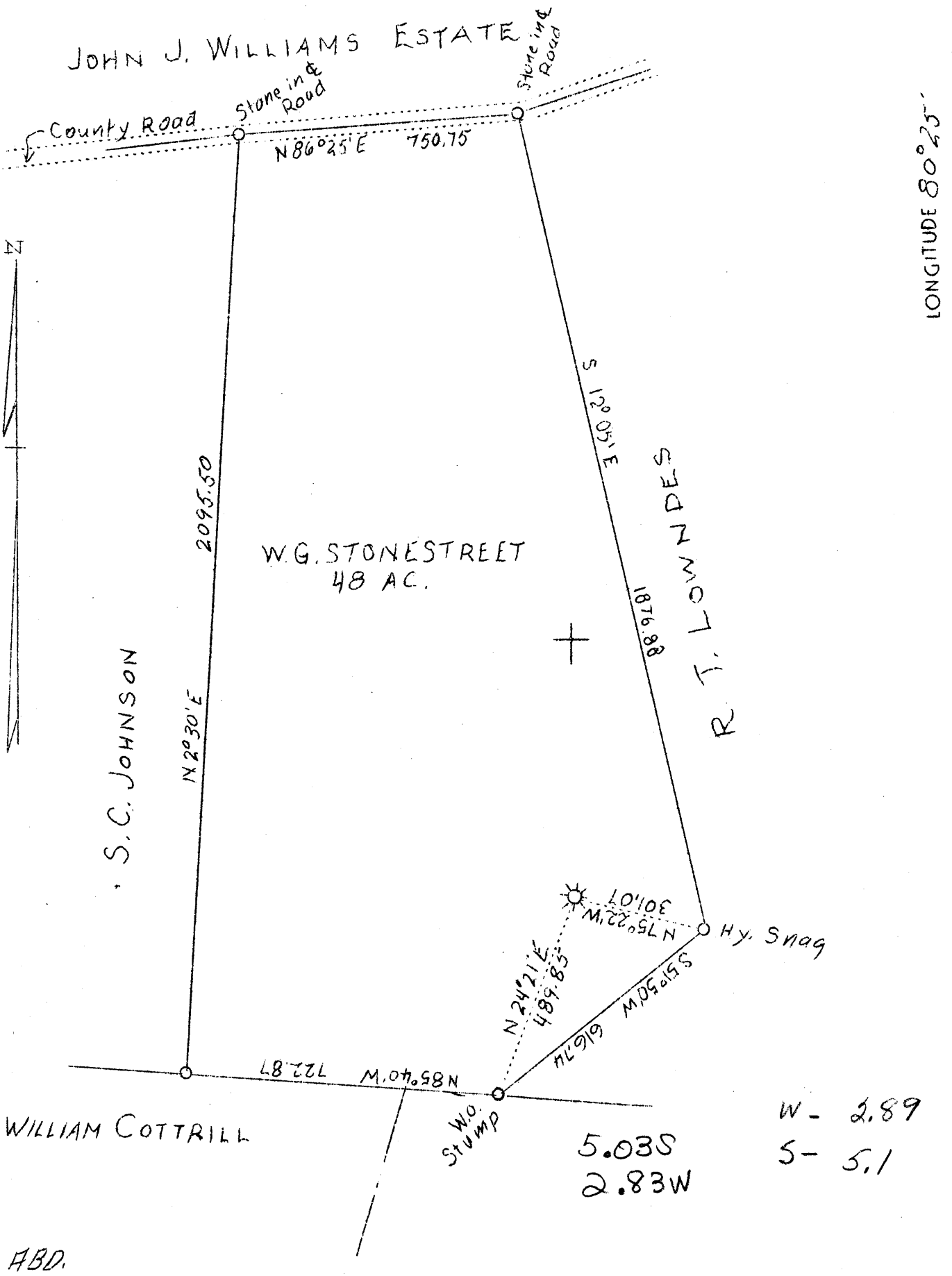


LATITUDE 39° 20'

LONGITUDE 80° 25'

JOHN J. WILLIAMS ESTATE



WILLIAM COTTRILL

S.C. JOHNSON

W.G. STONESTREET
48 AC.

R.T. LOWMIDES

Hy. Snag

W.O. Stump

5.03S
2.83W
W - 2.89
S - 5.1

ABD.

Company	Norwood Gas Co. 2878
Address	Clarksburg, W. Va.
Farm	W. G. Stonestreet
Acres	48
Well (Farm) No.	One
Elevation (SL)	1536.85
Quadrangle	Clarksburg SW
County	Harrison
District	Ten Mile
Engineer	Hornor Bros. Engrs. By Paul Allen Hornor
Eng. Reg. No.	602
Date	Nov. 28, 1938
Scale	1" - 300'

STATE OF WEST VIRGINIA
Department of Mines
OIL & GAS DIVISION
Charleston

WELL LOCATION MAP

File No. Har-456-A

x Denotes location of well on U. S. Topographic Maps, scale 1 to 62,500, latitude and longitude lines being represented by border lines as shown.

- Denotes one inch spaces on border line of original tracing.