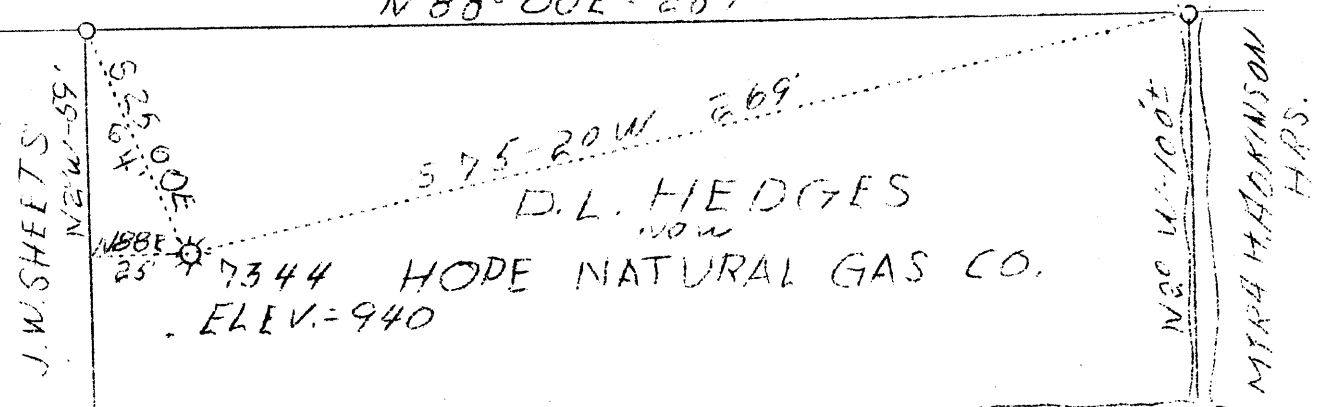


PHILIPPI PIKE  
N 88° 00' E - 287



ELK CREEK 3.9S 3.9 W  
3.80W

#B.D.

Company	Hope Natural Gas Co. 0384
Address	Clarksburg, W. Va.
Farm	D. L. Hedges
Tract	1 Acres 1 Lease No. 44643
Well (Farm) No.	1 Serial No. 7344
Elevation (Spirit Level)	940
Quadrangle	Clarksburg SE
County	Harrison District Clark
Engineer	Wm. Bowers
Engineer's Registration No.	900
File No.	Drawing No.
Date 5-24-38	Scale 1" = 50'

STATE OF WEST VIRGINIA  
Department of Mines  
OIL & GAS DIVISION  
Charleston

WELL LOCATION MAP

File No. Har-437-A

Denotes location of well on U. S. Topographic Maps, scale 1 to 62,500, latitude and longitude lines being represented by border lines as shown.

Denotes one inch spaces on border line of original tracing.

Clark District, Harrison County, W. Va.

By Hope Natural Gas Co., Clarksburg, W. Va.

437A

On 1 acre, on Elk Creek.

Elevation, 940' L.

Surface owned by Hope Natural Gas Co., Clarksburg, W. Va.

Drilling commenced May 7, 1917; completed, June 15, 1917.

Shot June 14, 1917, in 5th Sand.

No fresh water recorded; salt water at 790'.

10" casing, 145'; 8 $\frac{1}{2}$ "<sup>1</sup>, 950' (pulled); 6 $\frac{5}{8}$ "<sup>5</sup>, 1398'; 5 $\frac{3}{8}$ "<sup>3</sup>, 2189'.

Casing was not cemented. No coal was encountered.

Gas well. Abandonment reported to Dept. of Mines May 25, 1938.

Record to RCT from Mrs. Griffith May 27, 1938.

	Top.	Bottom.
Little Dunkard Sand	275	- 350
First Salt Sand (water, 790')	770	- 840
Second Salt Sand	860	- 930
Big Lime	1340	- 1394
Big Injun Sand	1394	- 1555
Fifty-foot Sand	1848	- 1970
Thirty-foot Sand	2034	- 2062
Gordon Sand	2186	- 2196
Fourth Sand	2284	- 2291
Fifth Sand (gas, 2348-2368')	2346	- 2385
Total depth		2398