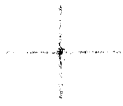


LATITUDE 39° 17' 30"

LONGITUDE 80° 32' 30"



1.460
0.21W

7'5 OGIS topo location

7.5' loc _____

15' loc 4.345
(calc.) 2.44W

Company F. G. Bish

Farm J. H. Benedum

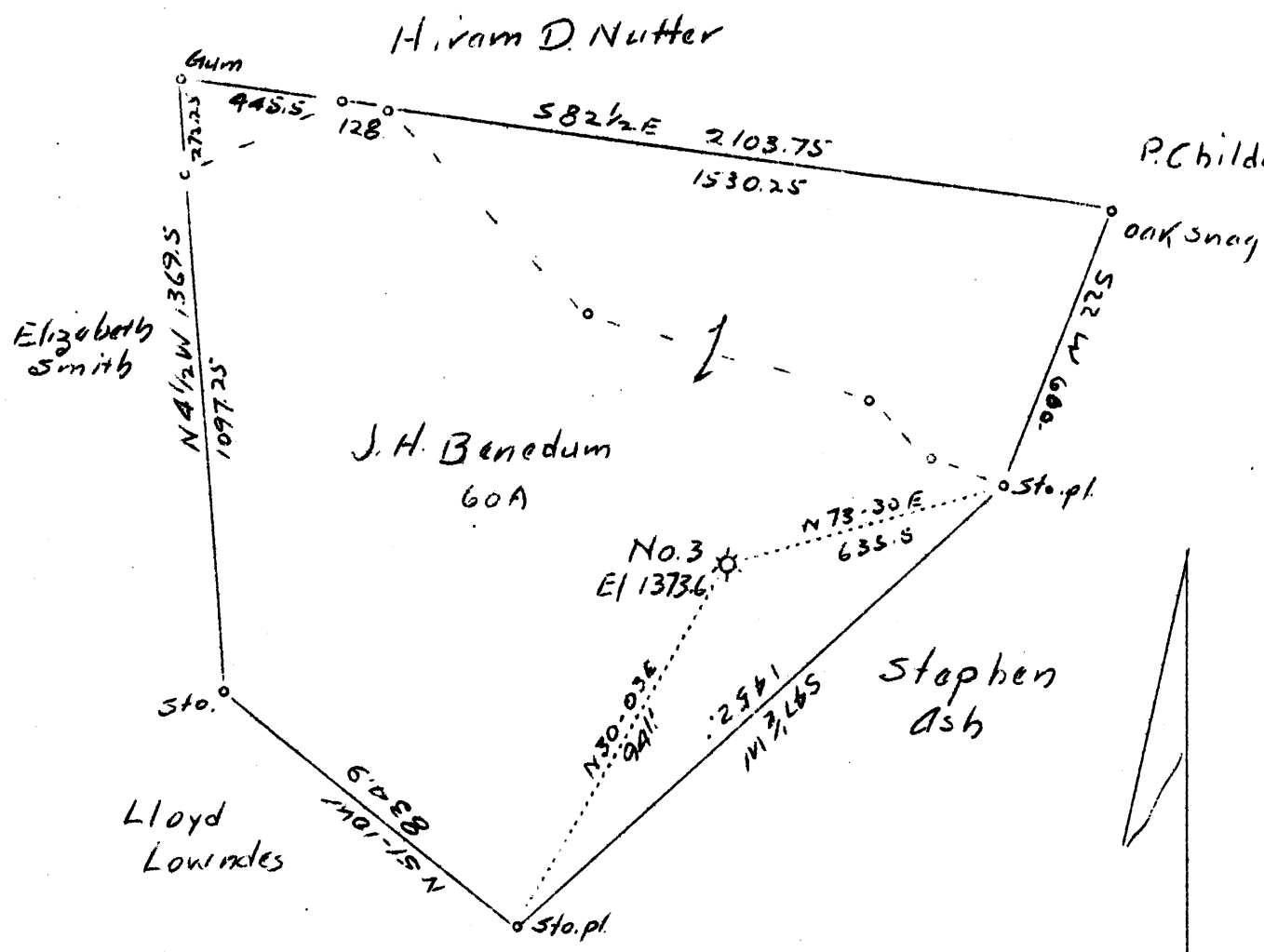
Quad Salem 7 1/2 ^{Centerpoint} SE

County Harrison

District Tenmile

WELL LOCATION MAP

File No. HAR-381A



Abandonment

Topo Location not given

Company	F. B. Bish	1964
Address	Clarksburg, W. Va.	
Farm	J. H. Benedum	
Tract	Acres 60	Lease No
Well (Farm) No.	3	Serial No.
Elevation (Spirit Level)	1373.6'	
Quadrangle	Centerpoint	SE
County	Harrison	District Tommilo
Engineer	Hornor Bros. Engrs. by E.V. Selby	
Engineer's Registration No.		
File No.	Drawing No.	
Date	5-11-37	Scale 1" - 400'

STATE OF WEST VIRGINIA
 Department of Mines
 OIL AND GAS DIVISION
 Charleston

WELL ABANDONMENT MAP

File No. HAR-381A

+ Denotes location of well on U. S. Topographic Maps, scale 1 to 62,500 latitude and longitude lines being represented by border lines as shown.

— Denotes one inch spaces on border line of original tracing.

RECEIVED

MAY 24 1937

WEST VIRGINIA
GEOLOGICAL SURVEY

321

WEST VIRGINIA DEPARTMENT OF MINES
OIL AND GAS DIVISION

WELL RECORD

Permit No. HAR-381-A

Oil or Gas Well Oil
(Kind)

Company.....
Address.....
Farm..... Acres.....
Location (waters).....
Well No..... Elev.....
District..... County.....
The surface of tract is owned in fee by.....
Mineral rights are owned by.....
Drilling commenced.....
Drilling completed.....
Date shot..... Depth of shot.....
Open Flow /10ths Water in..... Inch
/10ths Merc. in..... Inch
Volume..... Cu. Ft.
Rock Pressure..... lbs..... hrs.
Oil..... bbls., 1st 24 hrs.
Fresh water..... feet..... feet
Salt water..... feet..... feet

Casing and Tubing	Used in Drilling	Left in Well	Packers
Size			Kind of Packer.....
16.....			
18.....			
10.....	304	304	Size of.....
8 1/4.....	1400	1400	
6 5/8.....	2320	2320	Depth set.....
5 3/16.....			
3.....			Perf. top.....
2.....			Perf. bottom.....
Liners Used.....			Perf. top.....
			Perf. bottom.....

CASING CEMENTED..... SIZE..... No. FT..... Date.....
COAL WAS ENCOUNTERED AT 400 FEET 00 INCHES
550 FEET 00 INCHES FEET INCHES
FEET INCHES FEET INCHES

Formation	Color	Hard or Soft	Top	Bottom	Oil Gas or Water	Depth Found	Remarks
Sand			1430	1455			
Sand	Big bunkard		1500	1535			
Sand	Soft Sand		1910	1962			
Sand	Maxon		2115	2154			
Line	Big Line		2278	2329			
Sand	Big Injun		2329	2440			
Sand	Rever		2710	2745			
Sand	Soft		2845	2977			
Sand	50 ft		2922	2957			
Sand	Stray		2974	3006	Gas	2996	
Sand	Gordon		3026	3052	Oil	3005	
Sand	5th sand		3235	3245	Gas		
	Total depth			3265	Gas	3023 3235-42	

Formation	Color	Hard or Soft	Top	Bottom	Oil, Gas or Water	Depth Found	Remarks

100
 55
 55
 100
 55
 55
 100
 55
 55

75
 100
 55

1300
 500
 8

Date May 11 / 37, 19.....

APPROVED [Signature], Owner

By..... (Title)

Ten Mile District, Harrison County, W. Va.

By F. G. Bish, Clarksburg, W. Va.

On 60 acres, on Tenmile Creek.

Elevation, 1377⁶/₆'.

Surface owned by J. H. Benedum, Salem, W. Va., and minerals by
J. Q. VanSwearingen Trust, State of W. Va., taxes.

Drilling commenced in 1925; completed in 1925.

10" casing, 394'; 8¹/₂" 1400'; 6³/₈" 2329'; all left in.

Coal was encountered at 400-405 and 958-963'.

Oil well. Abandonment reported to Dept. of Mines May 11, 1937.

Record to RCT from D. G. Courtney 2-1-38.

	Top.	Bottom.
Sand	1430	- 1455
Sand, Big Dunkard	1500	- 1565
Sand, Salt	1916	- 1962
Sand, Maxton	2115	- 2154
Big Lime	2278	- 2329
Sand, Big Injun	2329	- 2440
Sand, Berea	2710	- 2745
Sand, 50-Ft.	2845	- 2877
Sand, 30-Ft.	2922	- 2957
Sand, Gordon Stray (gas, 2996'; oil, 3005')	2974	- 3006
Sand, Gordon (gas, 3028')	3026	- 3052
Sand, Fifth (gas, 3238-42')	3236	- 3245
Total depth		3265

381A