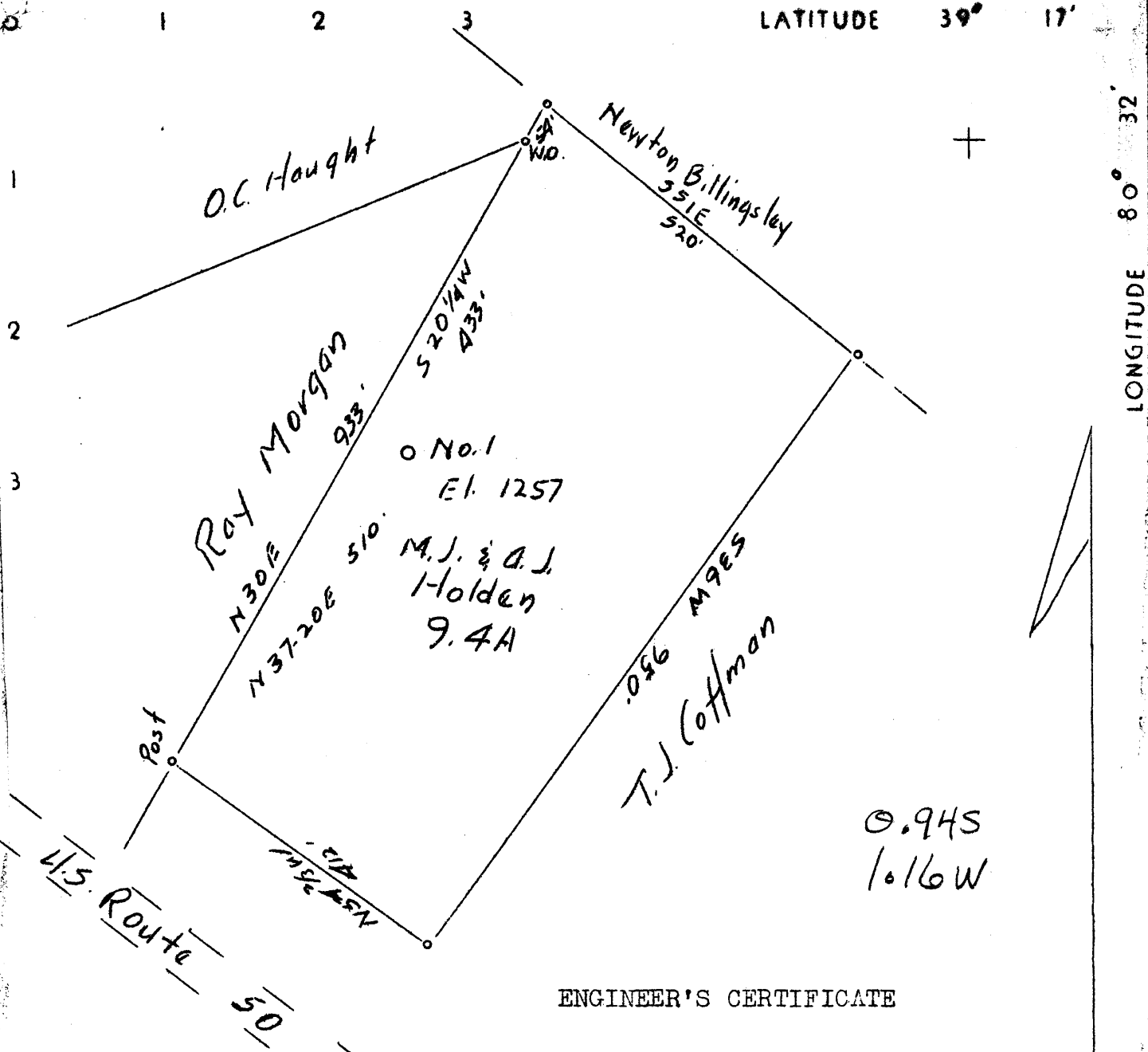


NOT LOCATED

LATITUDE 39° 17'

LONGITUDE 80° 32'



ENGINEER'S CERTIFICATE

I, the undersigned, hereby certify that this map is correct and shows all of the information to the best of my knowledge and belief, required by the oil and gas section of the mining laws of West Virginia.

(Signed) C.C. Fittro  
Engineer.

Acknowledged before me, a Notary Public of Harrison County, this the 31st day of July 1936,

S. H. Coffindaffer  
Notary Public

My Commission expires on the 12th day of Sept. 1944.

(?) 1.17 W of 80° 32'  
0.95 S of 39° 17'

Company	Rainelle Oil Company
Address	Salem, W. Va.
Farm	M. J. and A. J. Holden
Tract	Acres 9.4 Lease No.
Well(Farm) No. 1	Serial No.
Quadrangle	Centerpoint <b>SE</b>
County	Harrison
District	Tenmile
Engineer	C. C. Fittro
Engineer's Registration No.	
File No.	Drawing No.
Date	7-31-36 Scale 200 ft. 1 inch

STATE OF WEST VIRGINIA  
Department of Mines  
OIL AND GAS DIVISION  
Charleston

WELL LOCATION MAP

File No. HAR-377A

+ Denotes location of well on U. S. Topographic Maps, scale 1 to 62,500 latitude and longitude lines being represented by border lines as shown

— Denotes one inch spaces on border line of original tracing.

**RECEIVED**

**MAY 4 1937**

**WEST VIRGINIA  
GEOLOGICAL SURVEY**