

4190
Ten Mile District, Harrison County, W. Va. 327-A

By Israel H. Beren, Marietta, Ohio. (324 Second St.)

Drilled by Independent Oil Co.

On 170 acres, surface owned by Jeremiah G. Dakon Heirs, R. D. 2,
Bristol, W. Va., and mineral rights by J. V. Thompson Estate,
Uniontown, Pa.

Elevation, 1294' L.

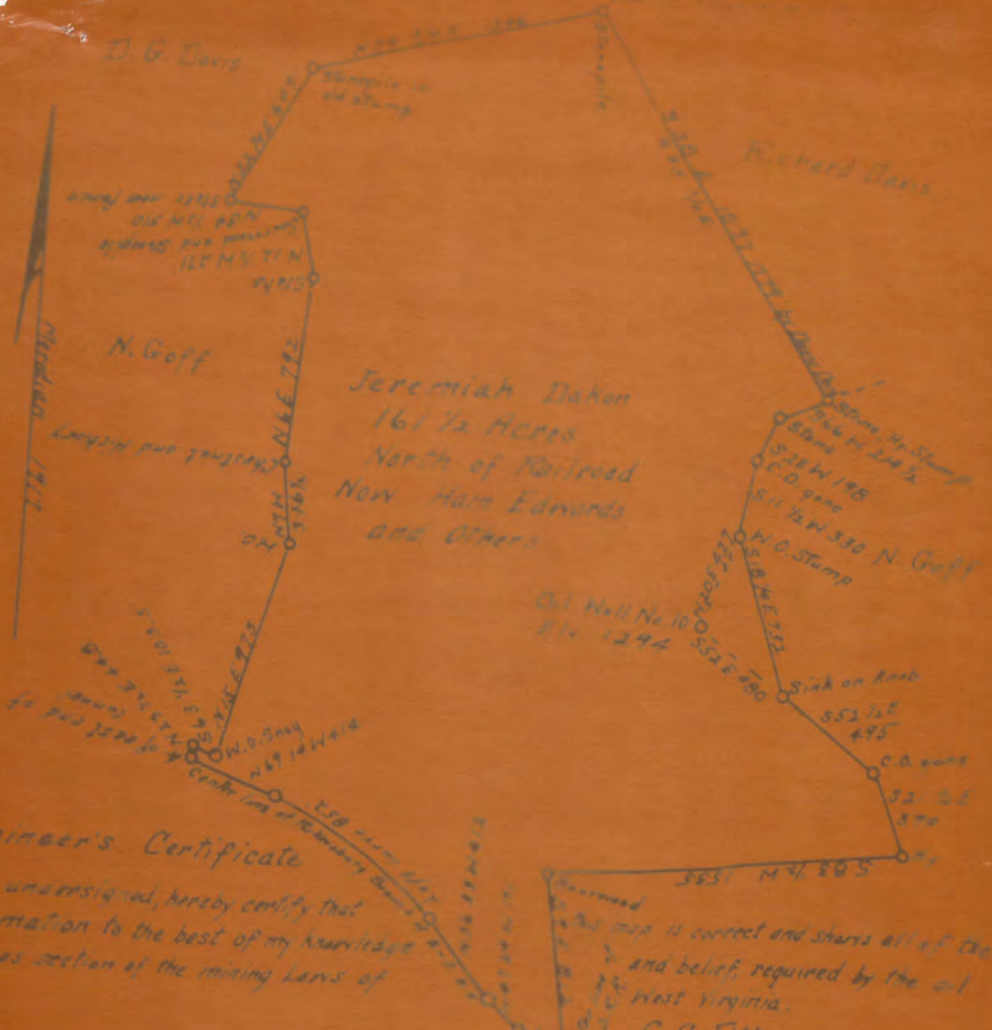
16" conductor, 16'; 10" casing, 346' (pulled); 8 1/4", 1206';
6-5/8", 2101'; 2" tubing, 2747'.

Coal was encountered at 660-668'.

Abandonment reported to Dept. of Mines July 6, 1936.

Well was shot at 2739-2747'.

	Top.	Bottom.	Thickness.
Conductor	0	- 8	8
Slate, red rock, and lime	8	- 660	652
Pittsburgh Coal	660	- 668	8
Slate, lime, and red rock	668	- 1060	392
Little Dunkard Sand	1060	- 1080	20
Lime	1080	- 1110	30
Big Dunkard Sand	1110	- 1170	60
Lime and slate	1170	- 1660	490
Salt Sand	1660	- 1740	80
Slate and lime	1740	- 1985	245
Big Lime	1985	- 2050	65
Big Injun Sand	2050	- 2130	80
Red rock, slate, and lime	2130	- 2415	285
Berea Grit Sand	2415	- 2455	40
Lime and slate	2455	- 2560	105
Thirty-foot Sand	2560	- 2588	28
Slate	2588	- 2650	62
Fifty-foot Sand	2650	- 2675	25
Slate and shells	2675	- 2690	15
Stray Sand	2690	- 2737	47
Gordon Sand	2737	- 2757	20
Slate	2757	- 2765	8
4th Sand, to bottom	2765	- 2777	12



Engineer's Certificate

I the undersigned, hereby certify that the information to the best of my knowledge and gas section of the mining lands of

is correct and shows all of the and belief, required by the oil West Virginia.
C. C. Fittro
 Engineer

Acknowledged before me a Notary Public of Harrison County, this the 20th day of May 1930.

Clara D. Decker
 Notary Public

My commission expires on the 3rd day of April 1941.

Company Independent Oil Company
 Address Clarksburg, West Virginia
 Farm Jeremiah Dakon, part north of RR
 Tract _____ Acres 16 1/2 Lease No. _____
 Well/Farm No. 10 Serial No. _____
 Quadrangle Clarksburg
 County Harrison
 Latitude 39° 00'

STATE OF WEST VIRGINIA
 DEPARTMENT OF MINES
 OIL AND GAS DIVISION
 CHARLESTON

WELL LOCATION MAP
 FILE NO. HAR-327

* Denotes location of well as shown by State
 Landmark Map. Price \$10.00.